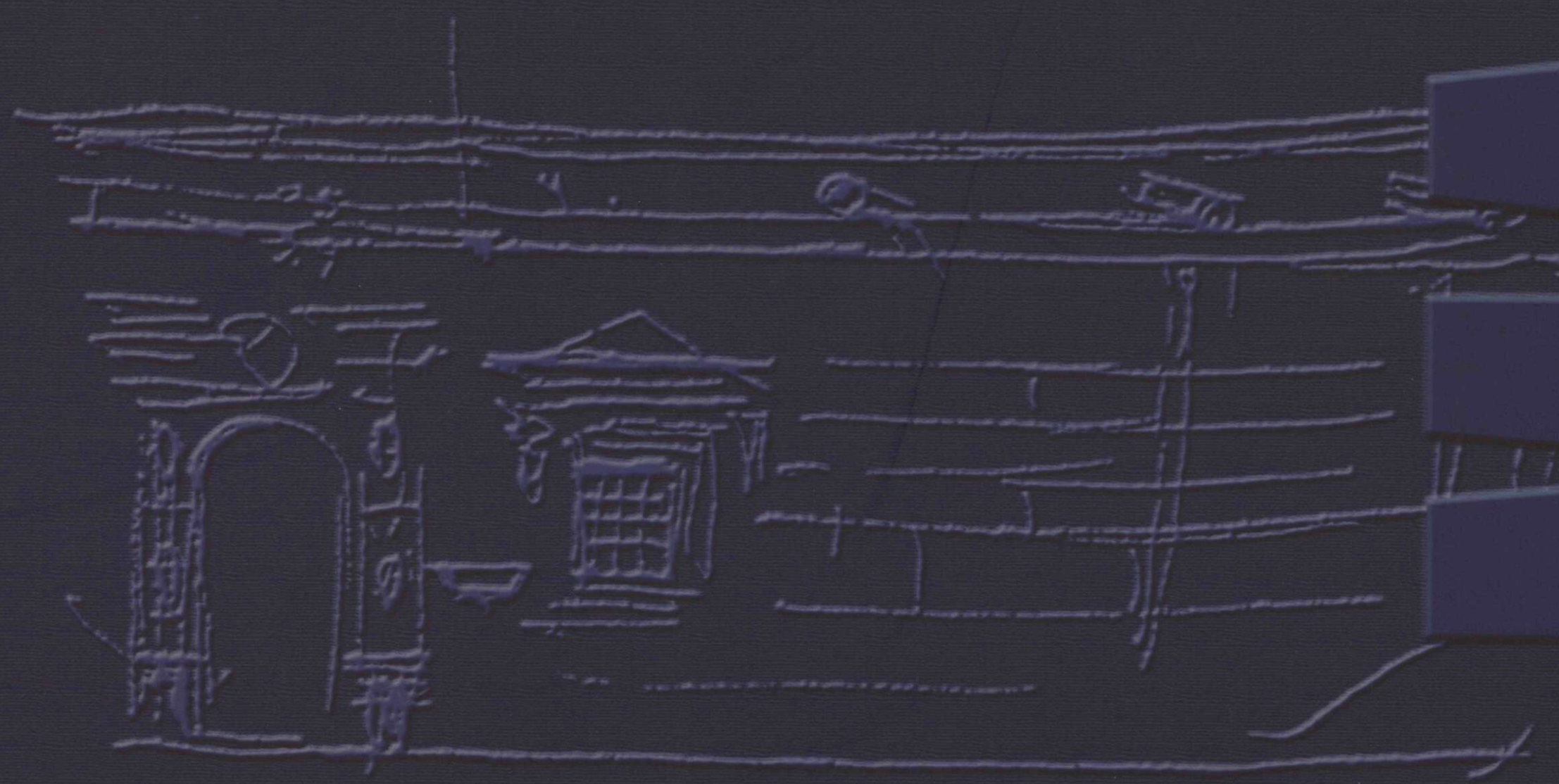


M M M
M M I
M M M

II



LOS DIBUJOS DE RAFAEL MASO

TESIS DOCTORAL

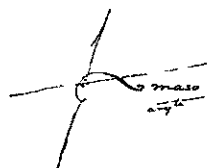
DIBUJO Y PENSAMIENTO EN LA OBRA DE RAFAEL MASO

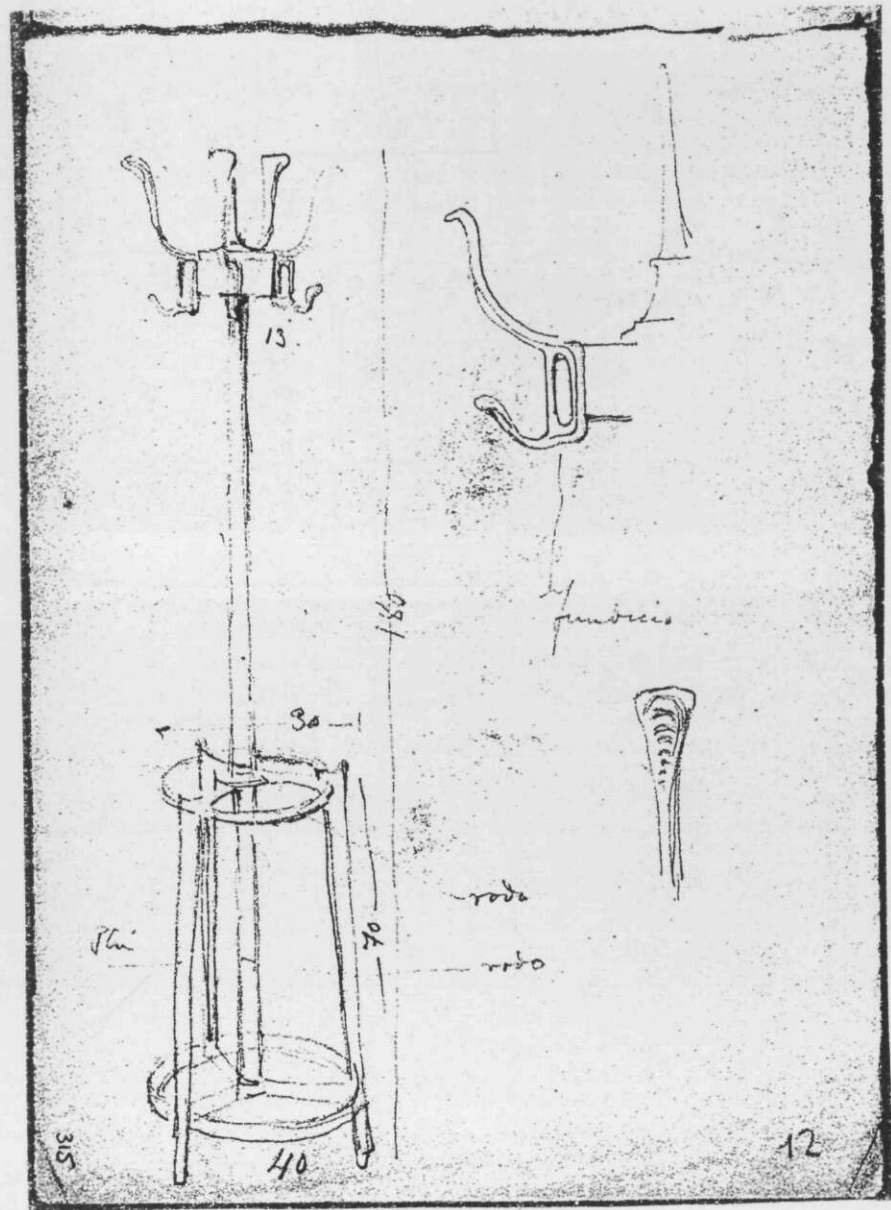
por Rafael Pérez González

MASO

DIBUJOS SUELTOS

Hasta el 586





Anno Domini 1500

OBILES ROS QUE PETRA 7807

DRES. NO. ROZES. FILI. 705. CRUS. SUA. UXOR.

EST. QUIN. DOCATA. DULCIA. BENEDICTI.

QUOD. QUOS. VIDES. DIC. SIBI. SIC. REQS. AME.

ET. PATER. MOTHER. ET. AVE. M. P. HAB. IP. RUA.

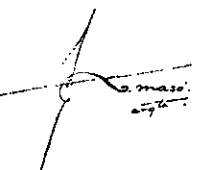
These figures represent the various parts of the building, as shown in the drawing. The figures are arranged in a way that shows the relationship between the different parts of the building. The figures are arranged in a way that shows the relationship between the different parts of the building.

305

12



1.3. DIBUJOS DE ARQUITECTURA INTERIOR

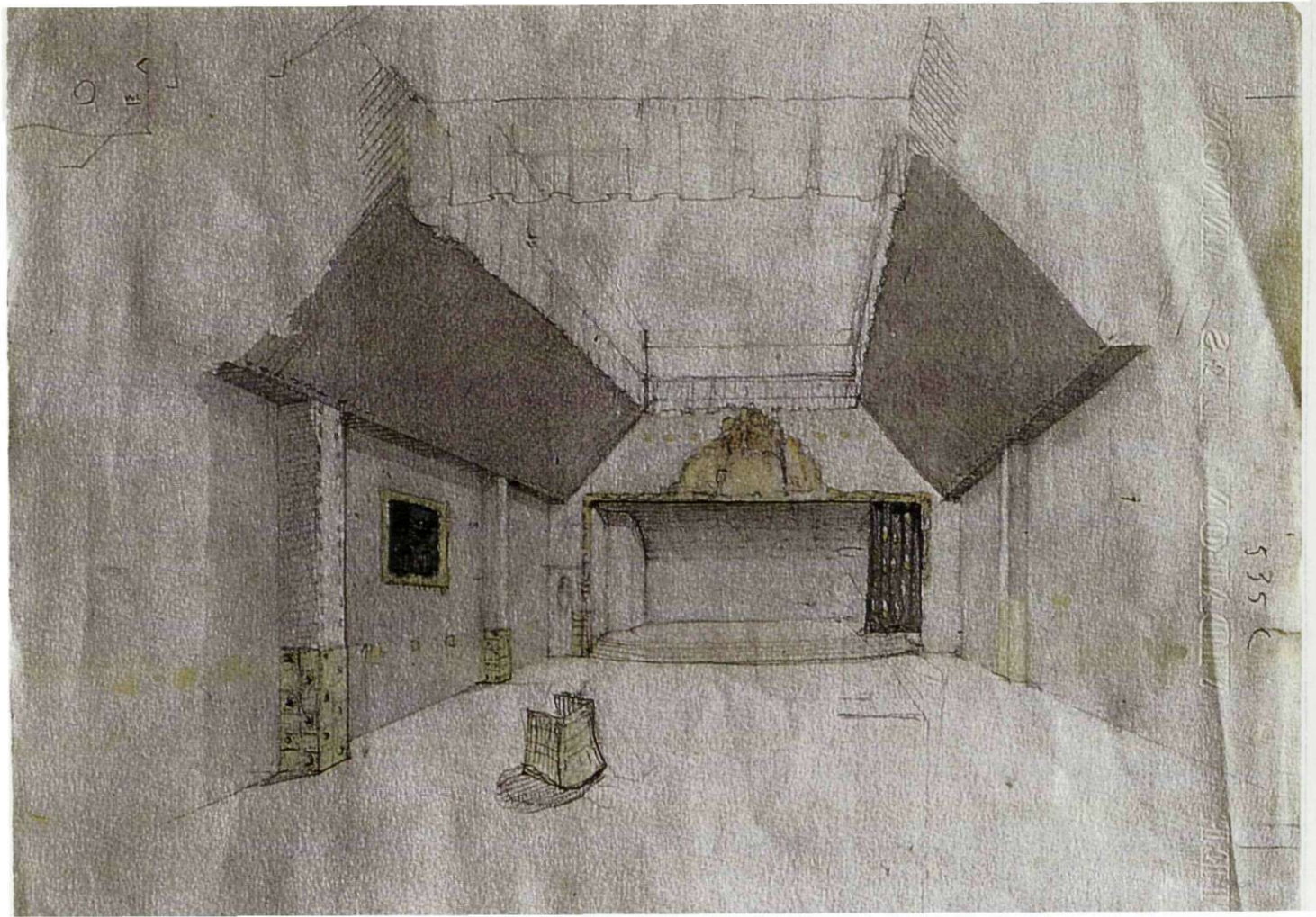


ARQUITECTURA INTERIOR

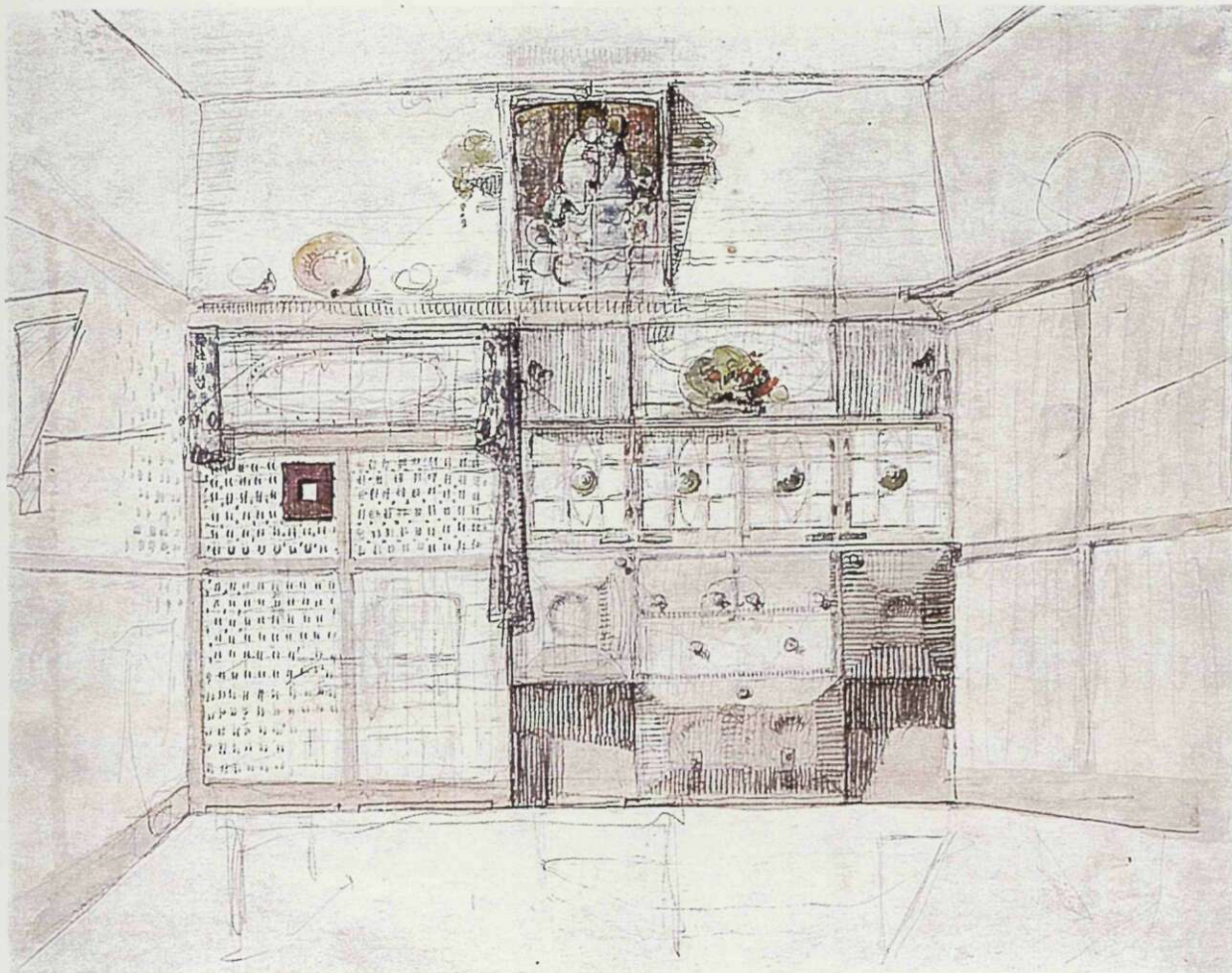
1. Casa Ensesa. (1.916).
2. Edificio Athenea. (1.913).
3. Casa Masó. (1.911).
4. Casa Vinyes. (1.907).
5. Casa Masó (Escalera). (1.911).
6. Casa Masó (Escritorio para Esperanza Bru). (1.911).
7. Mueble Casa de S'Agaró. (1.924 – 1.935).
8. Herraje Casa de S'Agaró. (1.924 – 1.935).
9. Boceto Dormitorio.
10. Mesa (Mueble).
11. Comedor (Mueble).
12. Lámpara (La Gavina –S'Agaró-). (1.924 – 1.935).
13. Tienda Adroher. (1.927).
14. Casa Casas (Detalle del Escultor Fidel Aguilar). (1.914).,
15. Cabezal Dormitorio Casa Masó. (1.911).
16. Casa Masó (Mueble). (1.911).
17. Casa Masó (Mueble). (1.911).
18. Casa Casas (Puerta) Ornamentación de Cerámica. (1.914).
19. Casa Masó (Muebles). (1.911).



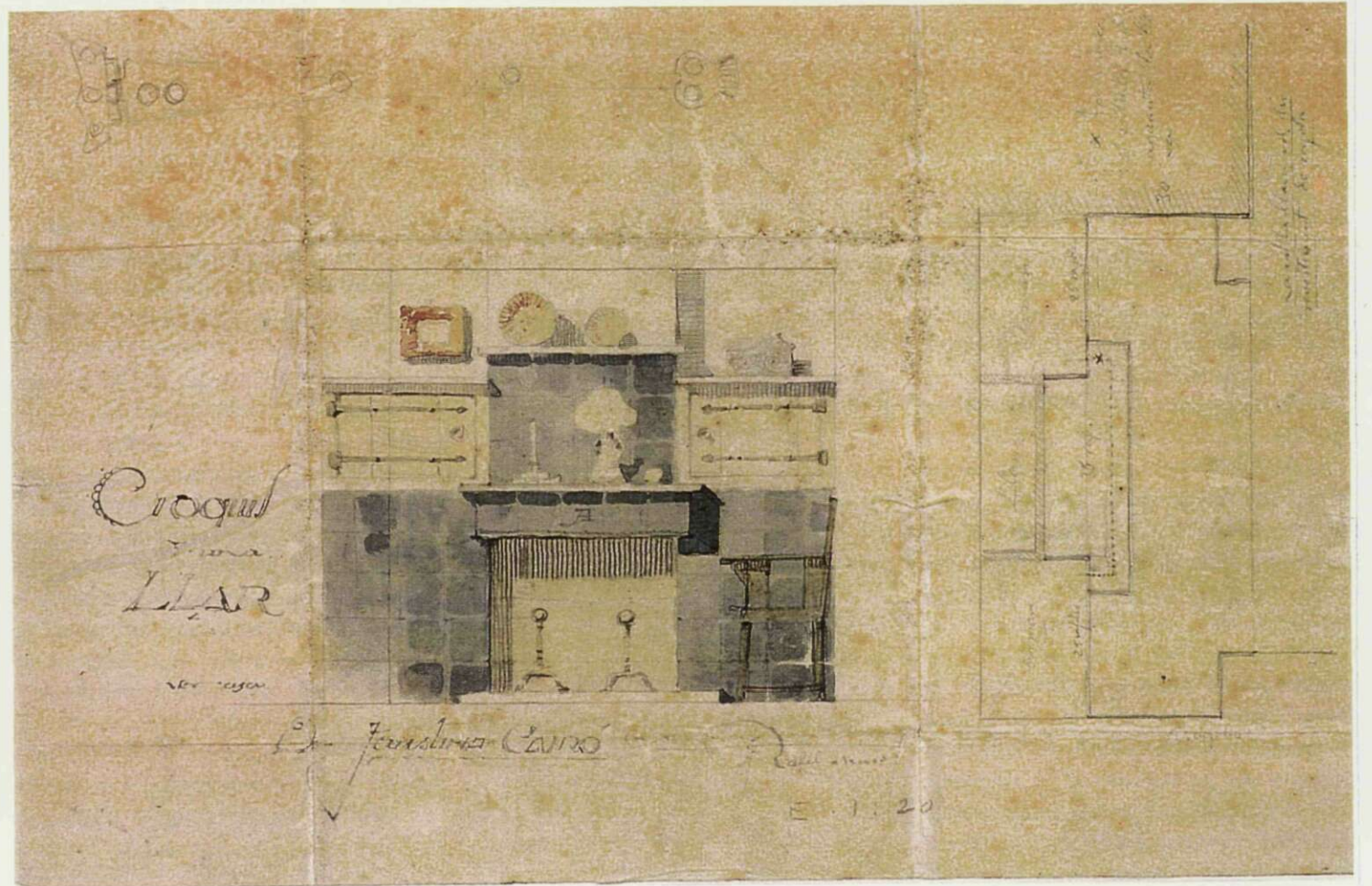
1



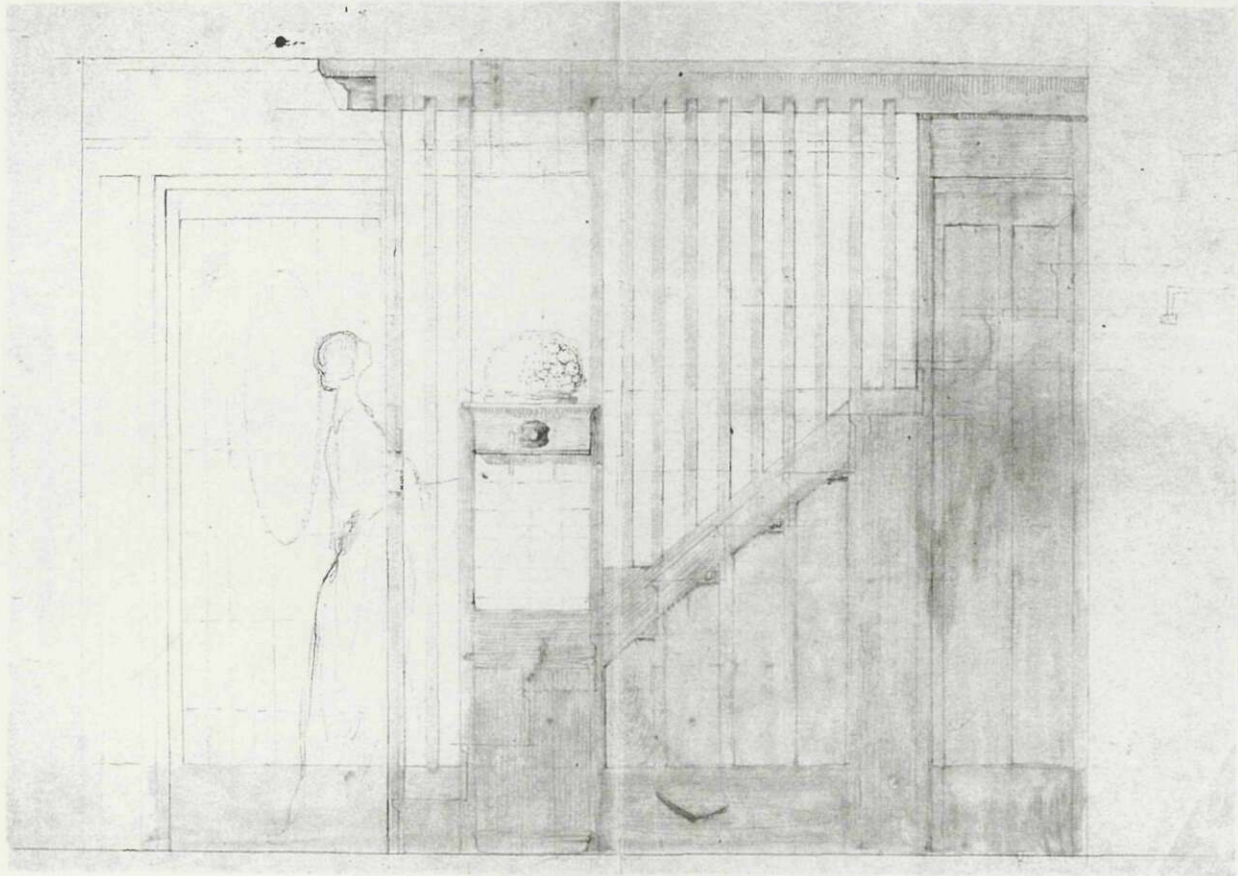
2



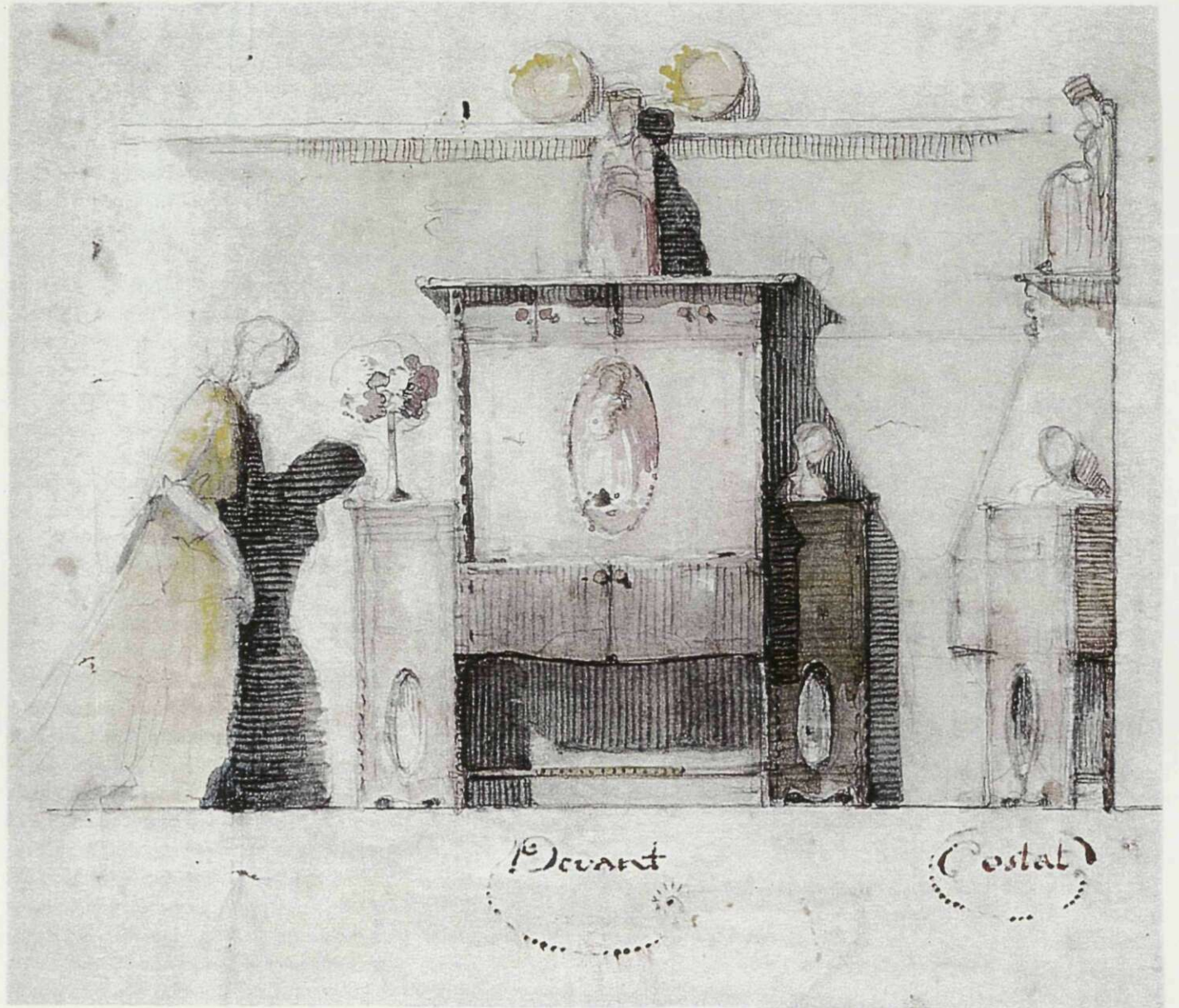
3



4



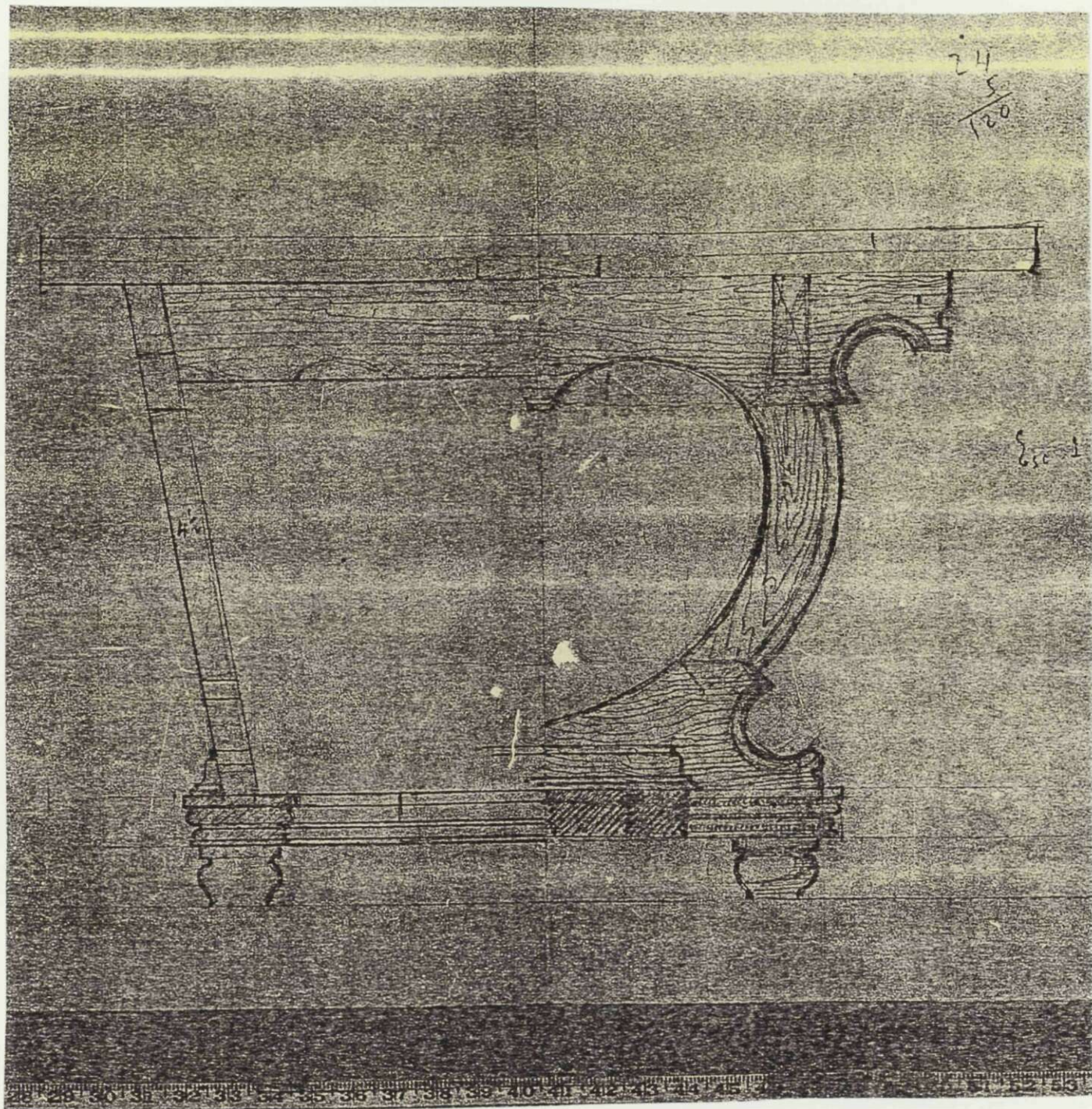
5



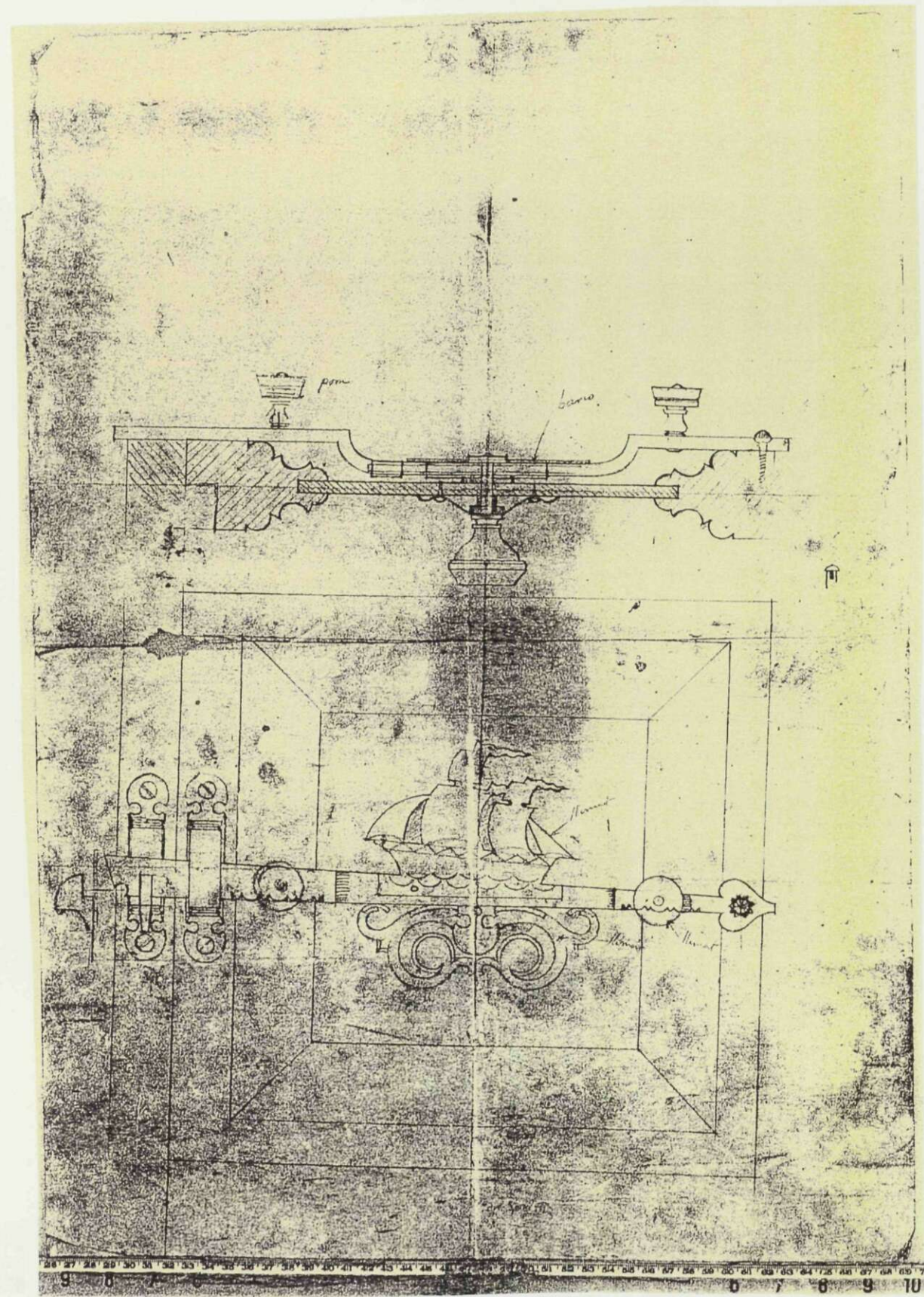
Devant

Costat

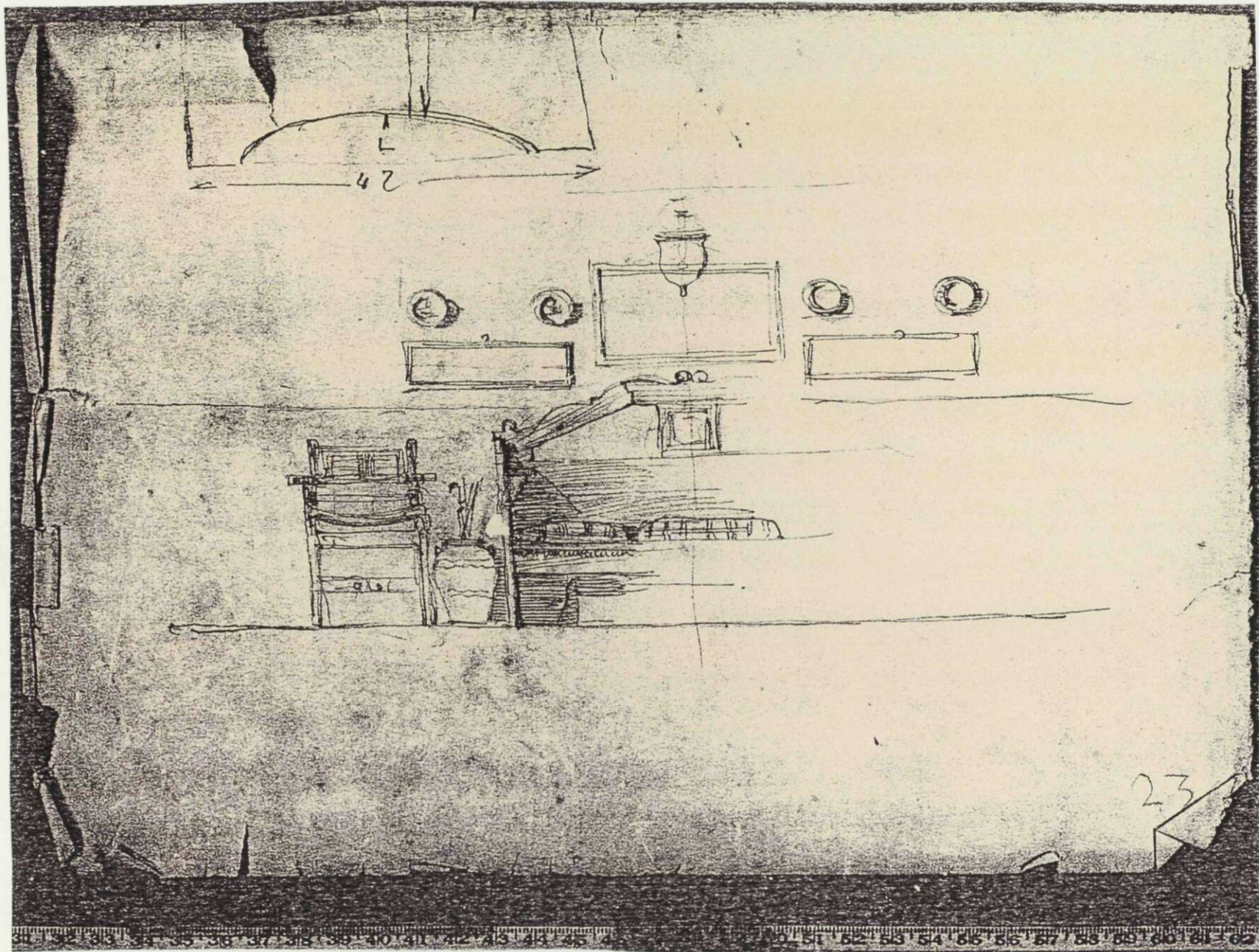
6



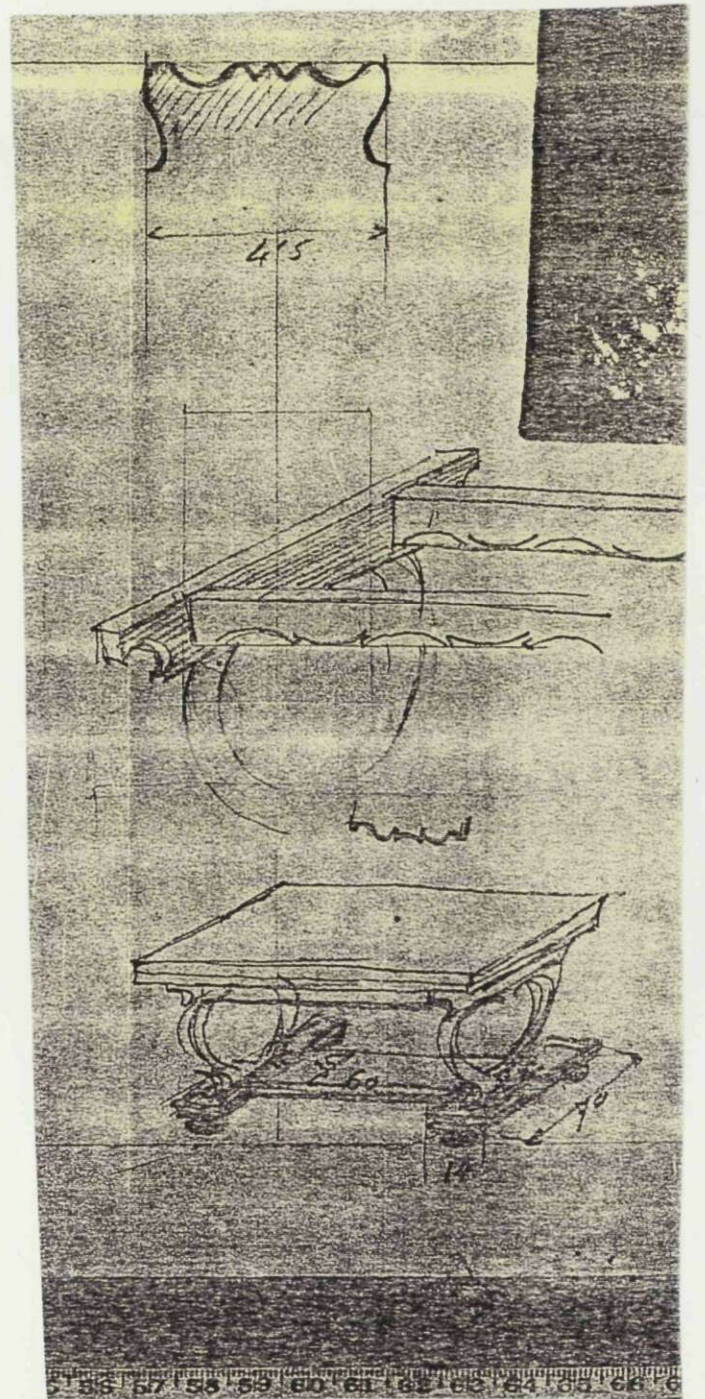
7



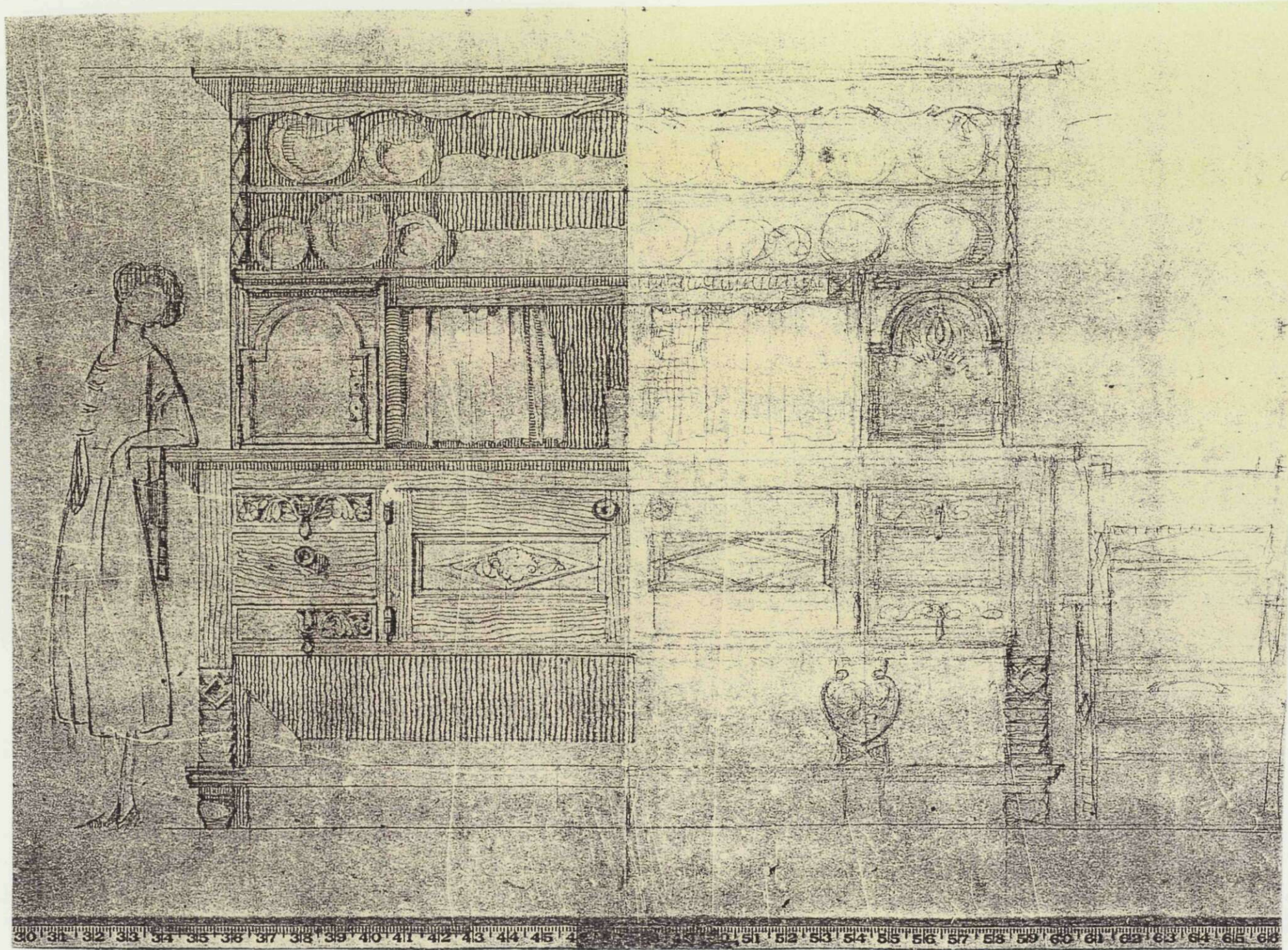
8



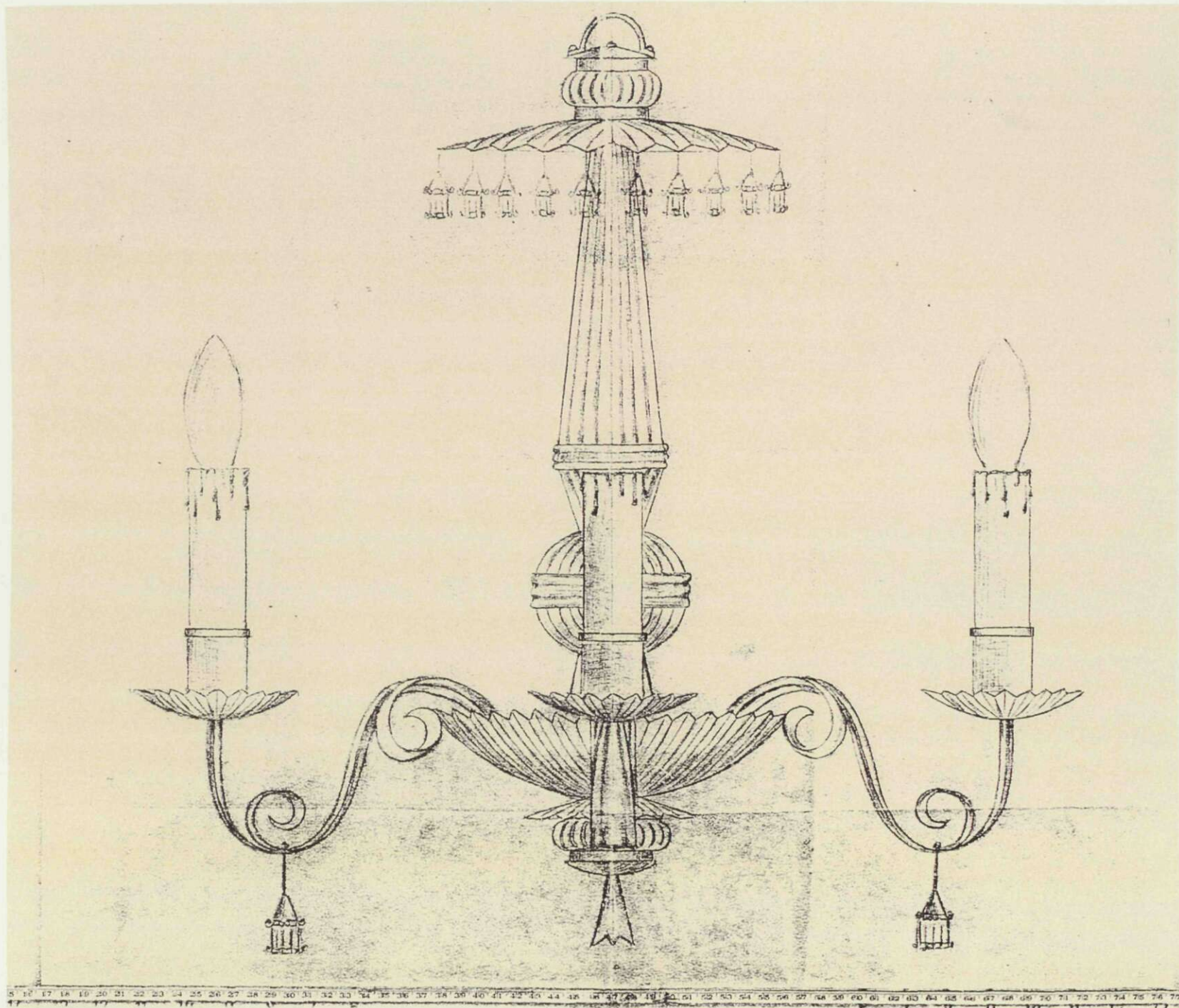
9



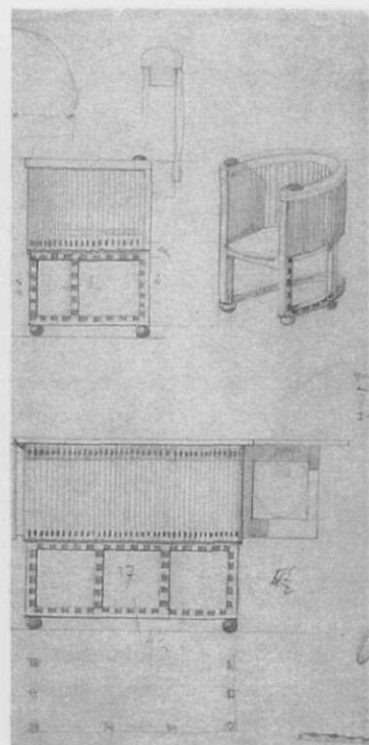
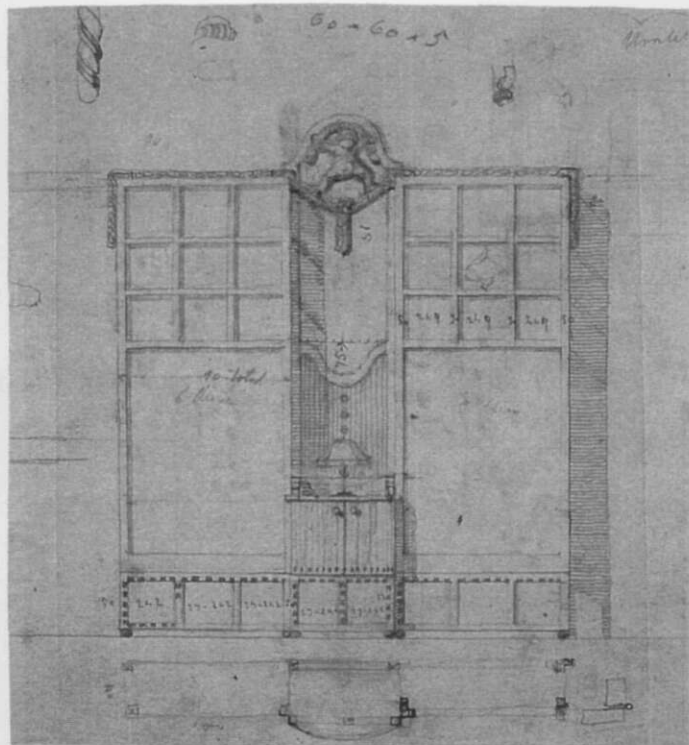
10



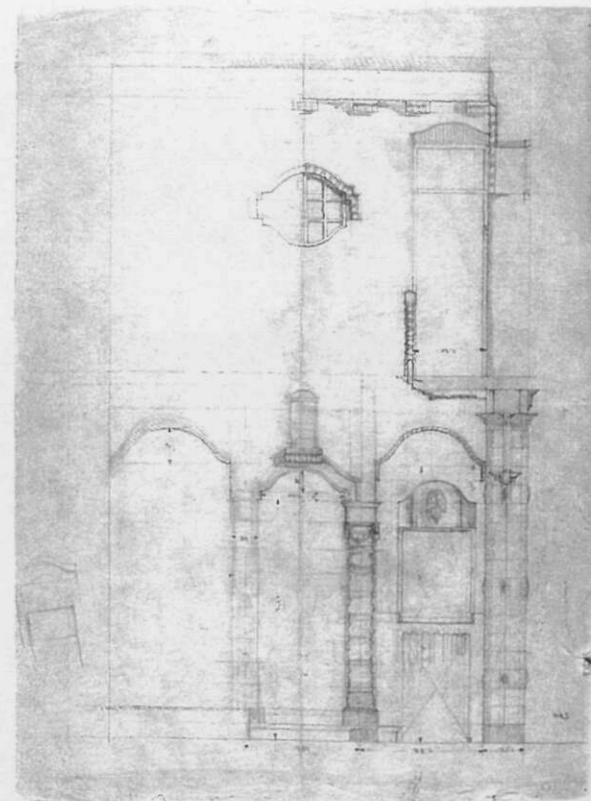
11



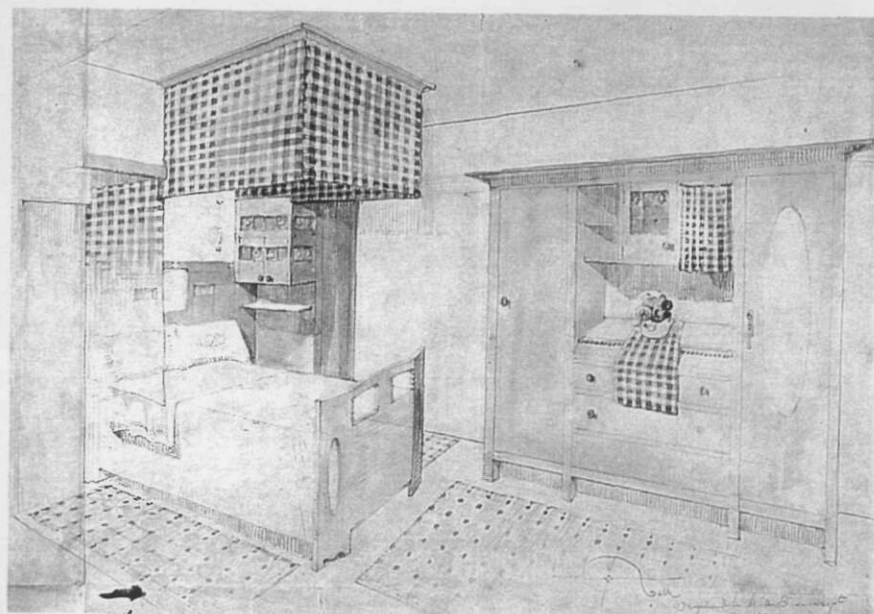
12



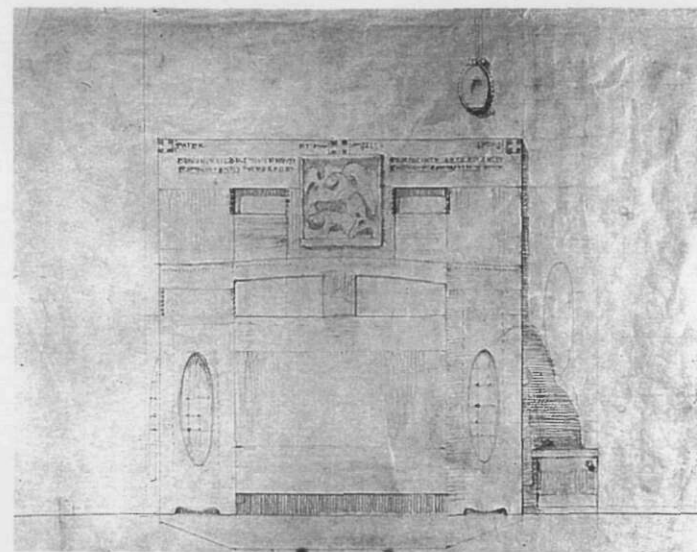
13



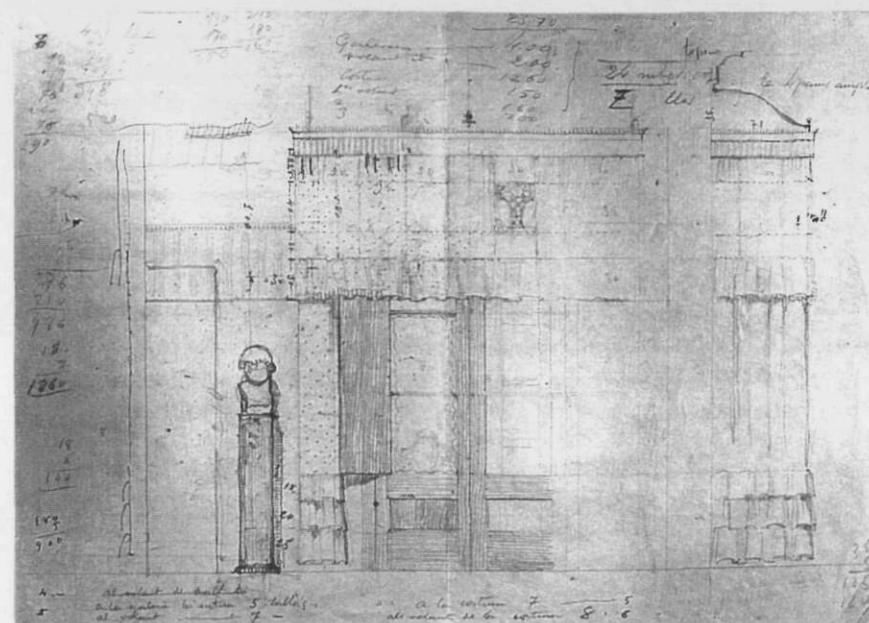
14



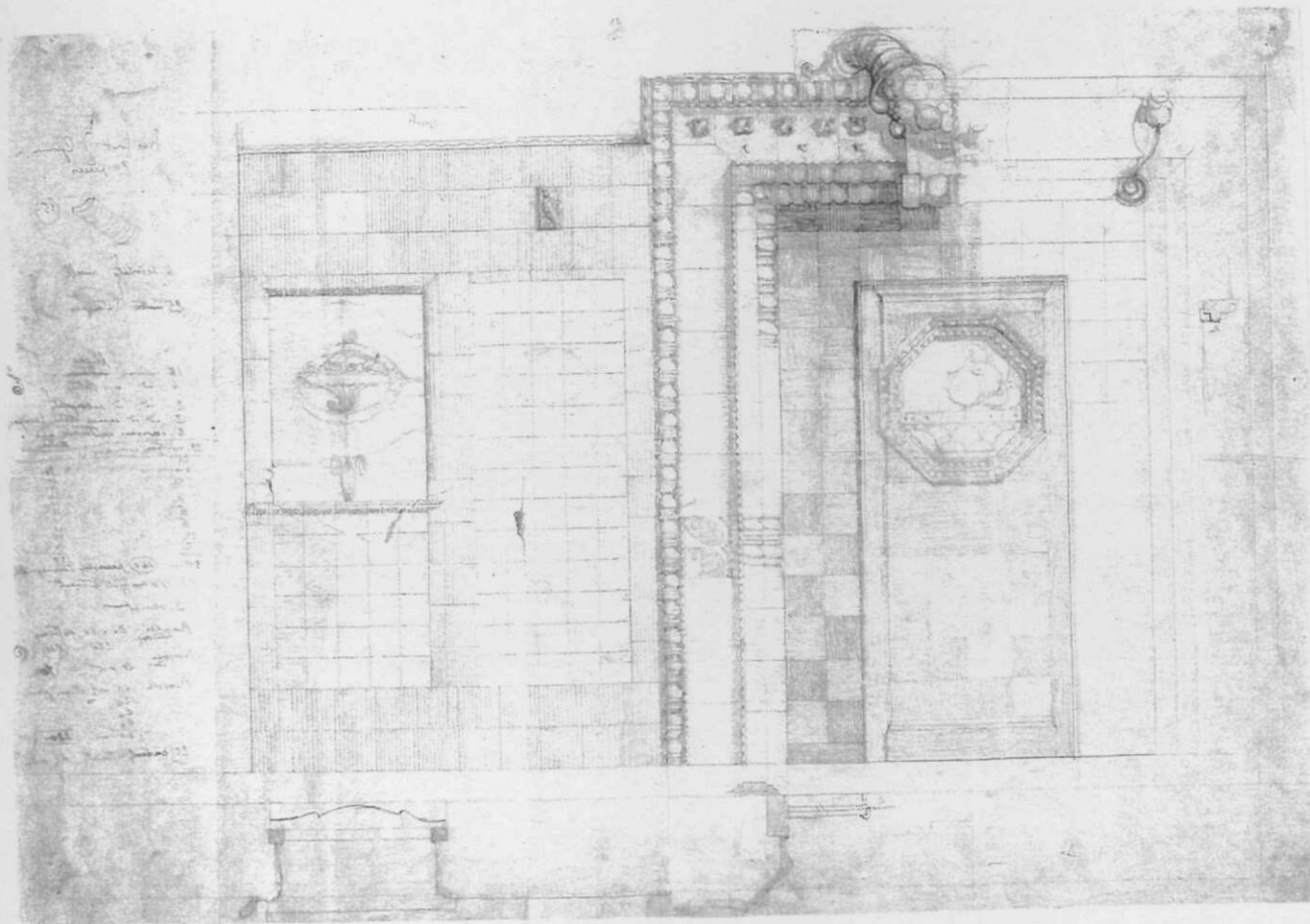
15



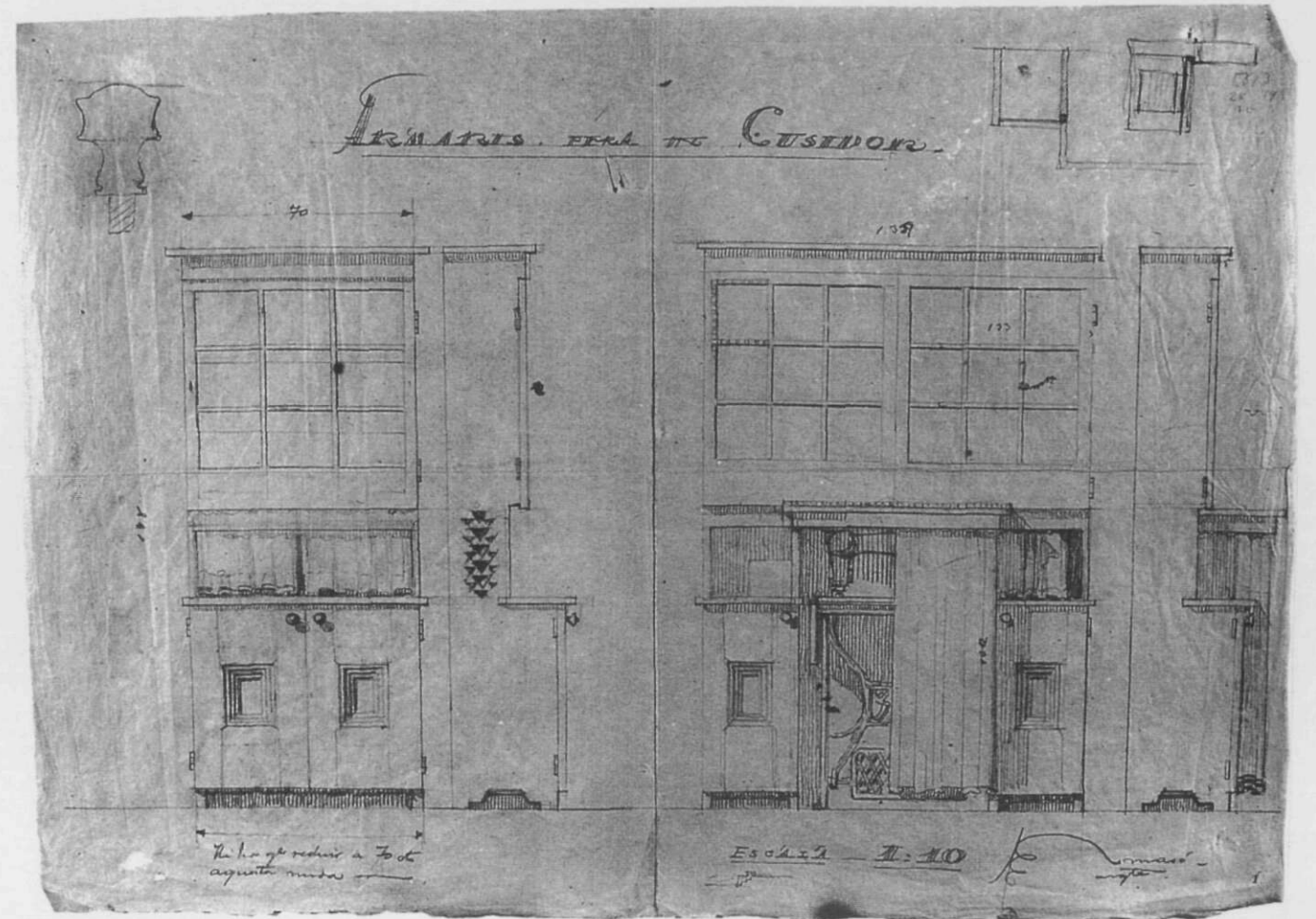
16



17



18



19