

CORRIGENDA

Thesis:

Coastal vulnerability to storms at different time scales.
Application to the Catalan coast.

I) Figure 4.25, located in page 53, must be replaced by the following one:

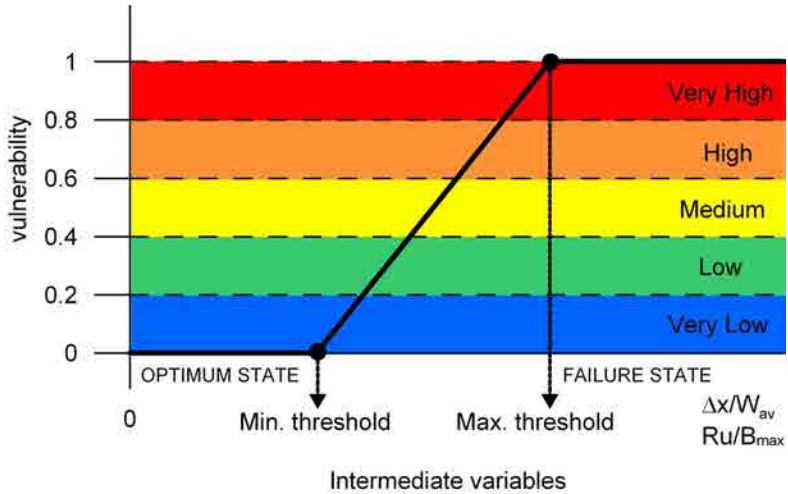


Figure 4.25: Vulnerability function.

II) Figures A.6, A.7, A.10, A.11, A.14 and A.15, corresponding to the Appendix A and located in pages 148, 149, 152, 153, 156 and 157 respectively, must be replaced by the following ones:

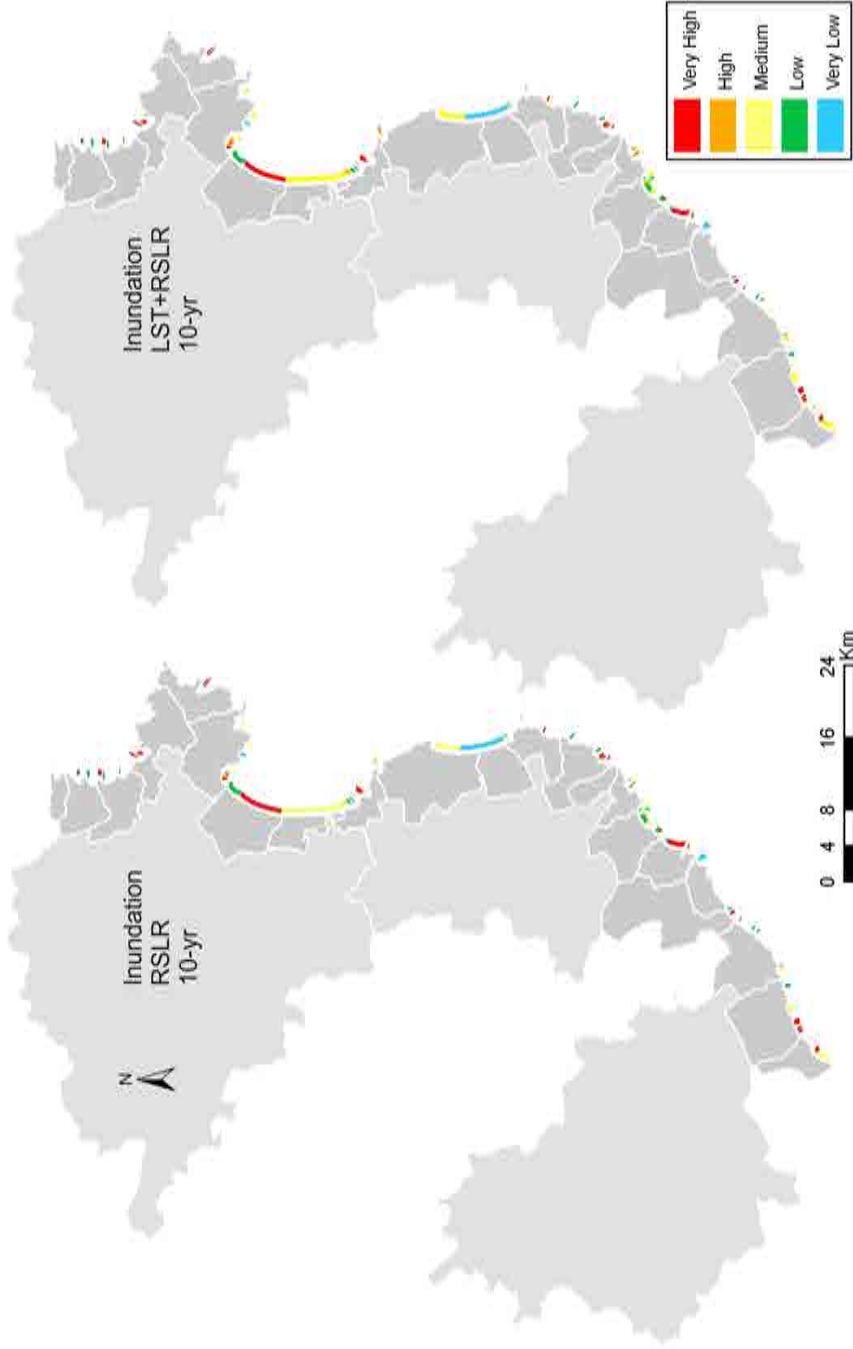


Figure A.6: Maps of vulnerability to storm-induced inundation of Girona province for the 10-year projection with respect to the baseline (2010). Top: RSLR contribution. Bottom: LST and RSLR integrated contribution. $Tr=50$ years. Coastal *comarcas* in light grey, coastal municipalities in dark grey.

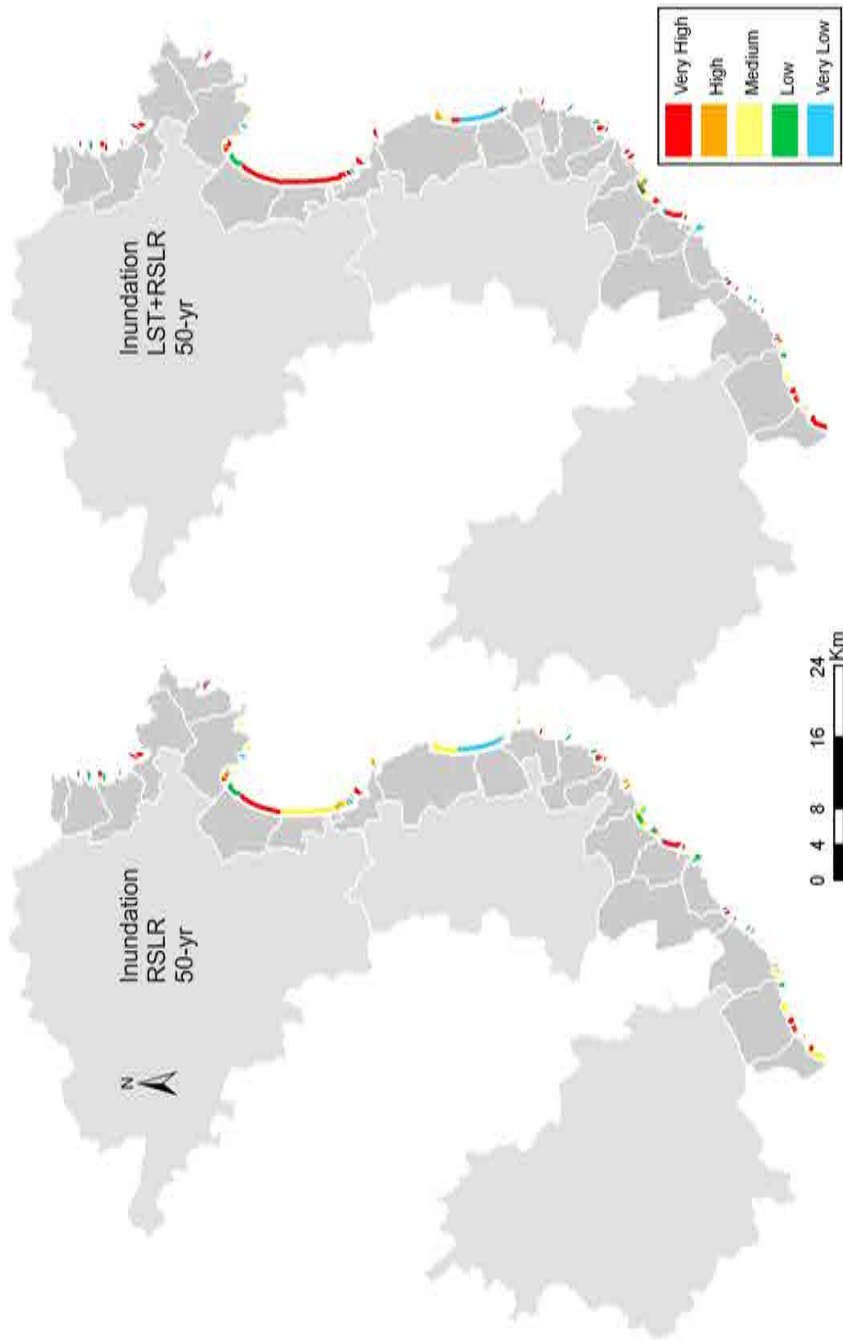


Figure A.7: Maps of vulnerability to storm-induced inundation of Girona province for the 50-year projection with respect to the baseline (2010). Top: RSLR contribution. Bottom: LST and RSLR integrated contribution. Tr=50 years. Coastal *comarcas* in light grey, coastal municipalities in dark grey.

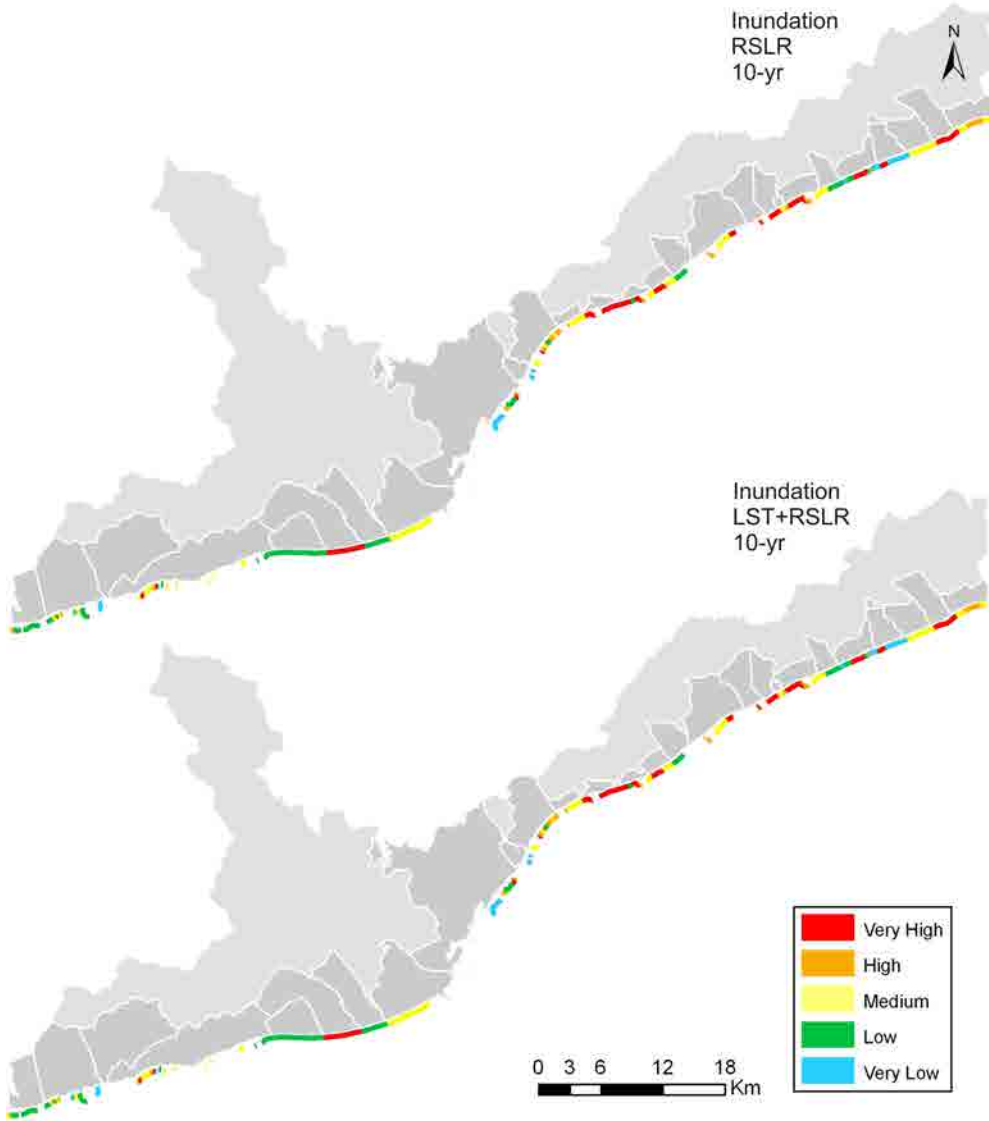


Figure A.10: Maps of vulnerability to storm-induced inundation of Barcelona province for the 10-year projection with respect to the baseline (2010). Top: RSLR contribution. Bottom: LST and RSLR integrated contribution. $Tr=50$ years. Coastal *comarcas* in light grey, coastal municipalities in dark grey.

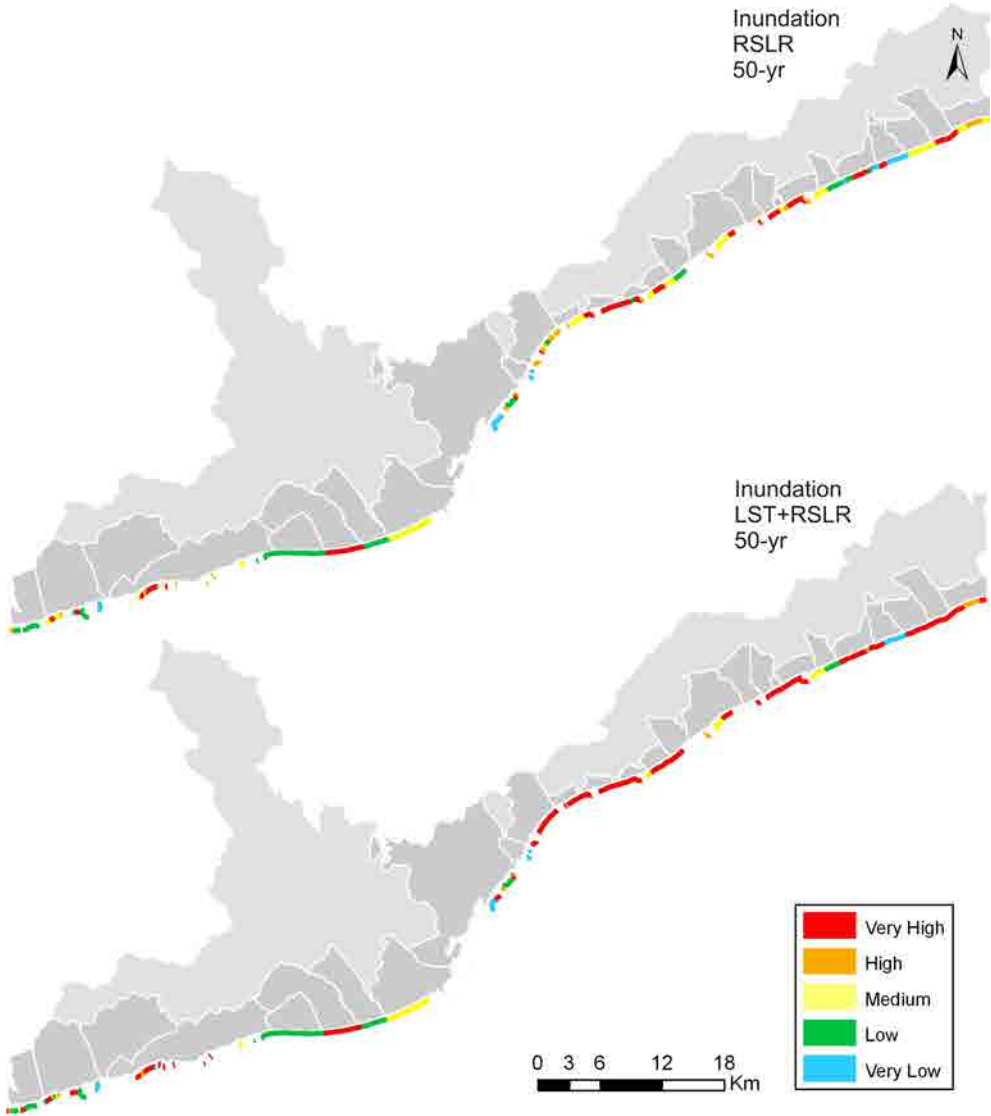


Figure A.11: Maps of vulnerability to storm-induced inundation of Barcelona province for the 50-year projection with respect to the baseline (2010). Top: RSLR contribution. Bottom: LST and RSLR integrated contribution. $T_r=50$ years. Coastal *comarcas* in light grey, coastal municipalities in dark grey.

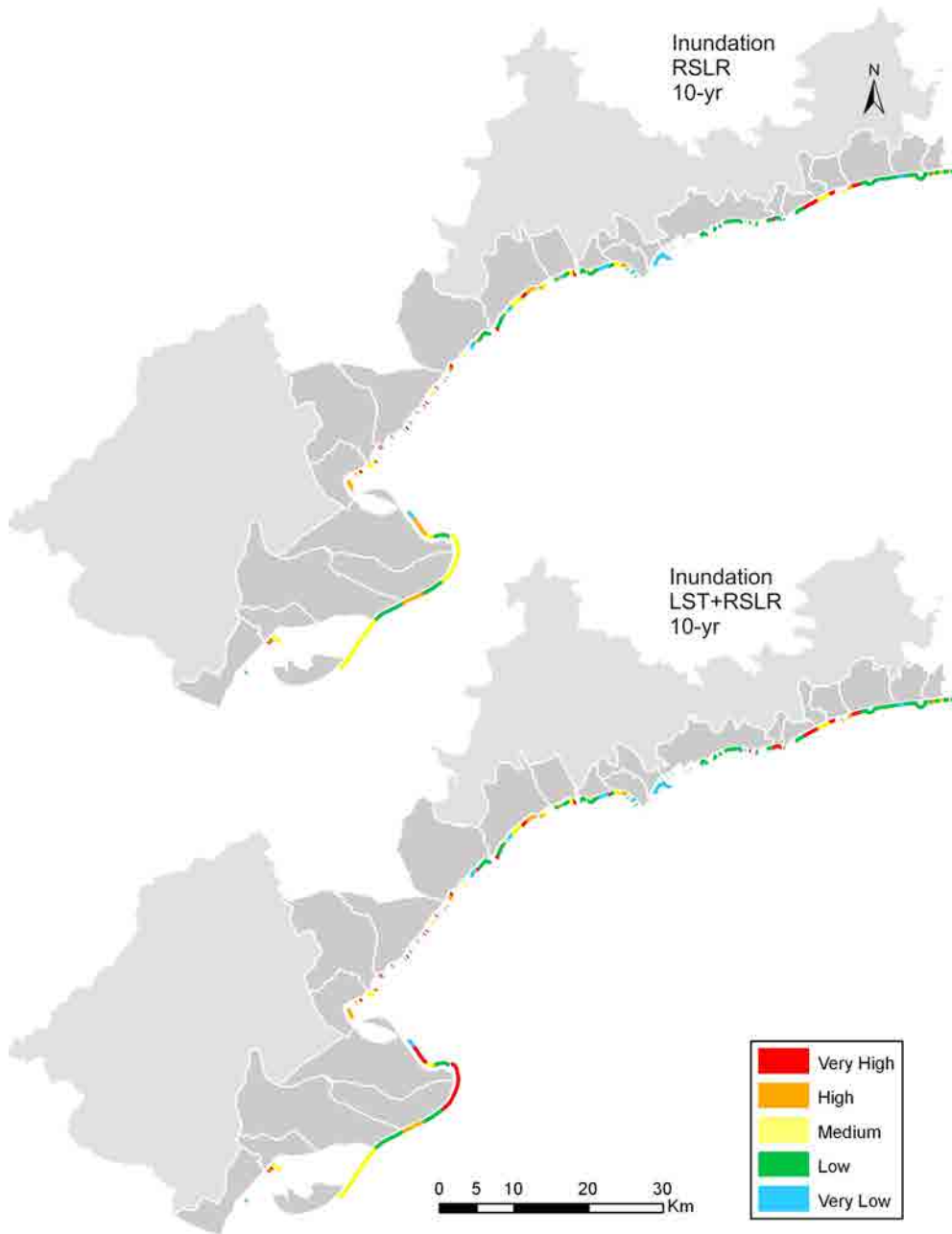


Figure A.14: Maps of vulnerability to storm-induced inundation of Tarragona province for the 10-year projection with respect to the baseline (2010). Top: RSLR contribution. Bottom: LST and RSLR integrated contribution. $Tr=50$ years. Coastal *comarcas* in light grey, coastal municipalities in dark grey.

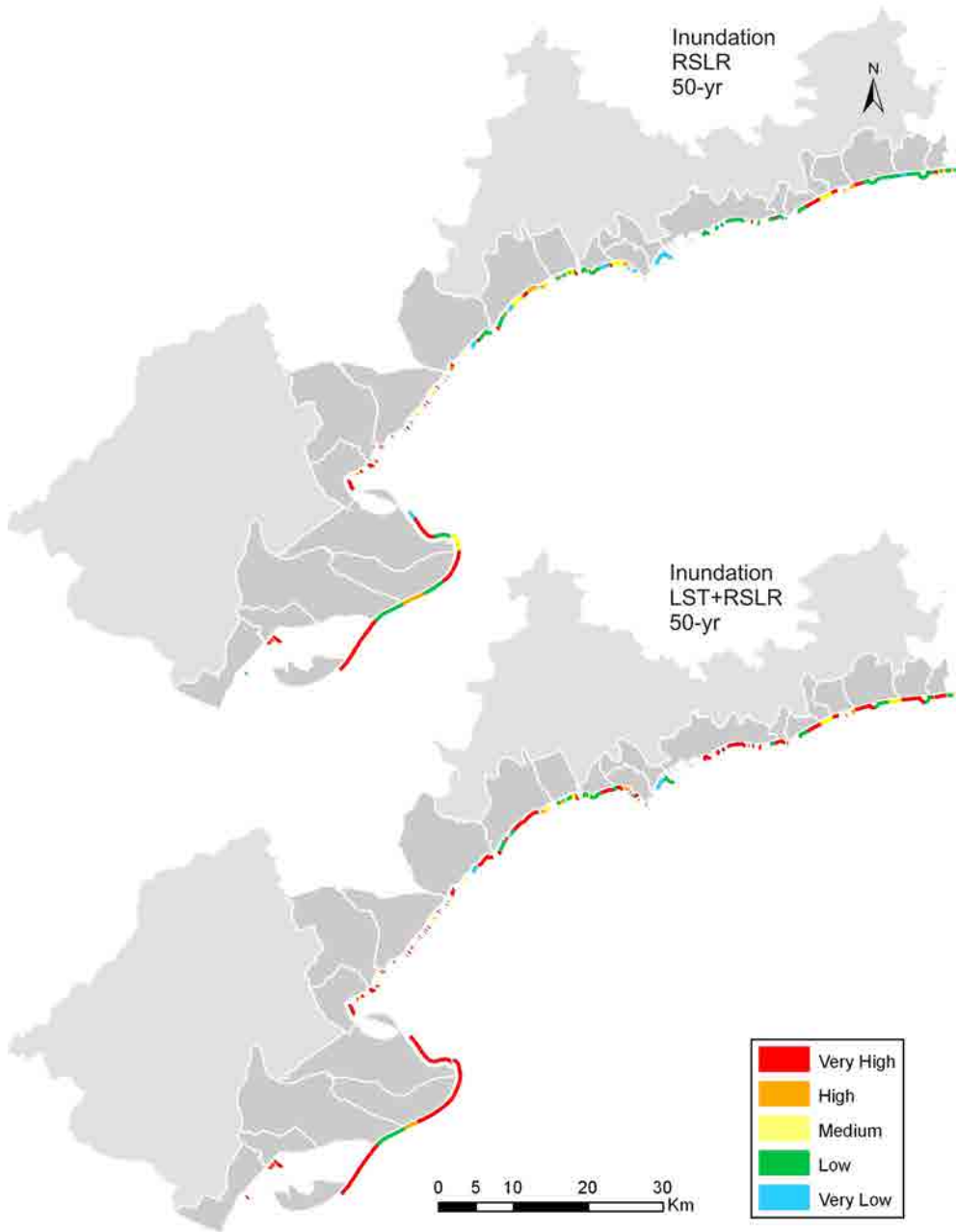


Figure A.15: Maps of vulnerability to storm-induced inundation of Tarragona province for the 50-year projection with respect to the baseline (2010). Top: RSLR contribution. Bottom: LST and RSLR integrated contribution. Tr=50 years. Coastal *comarcas* in light grey, coastal municipalities in dark grey.