

Figura 4-9.- Primer arco branquial de *Trachyrhynchus trachyrhynchus*. A: cara anterior; B: cara posterior.

Figura 4-10.- Primer arco branquial de *Phycis blennoides*. A: cara anterior; B: cara posterior.

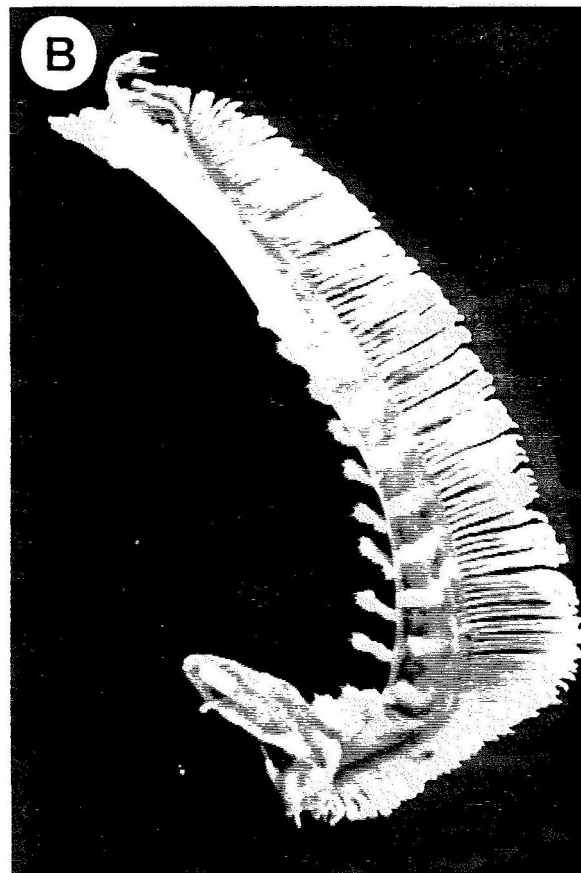
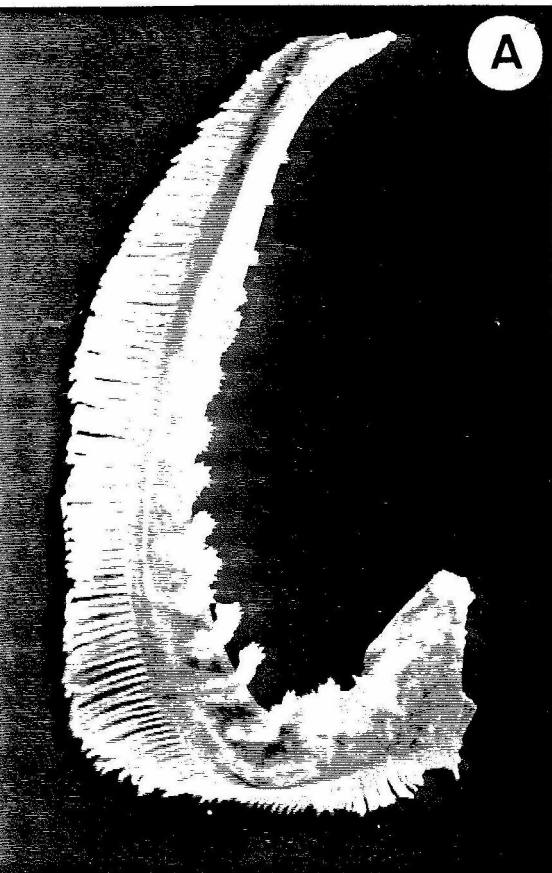
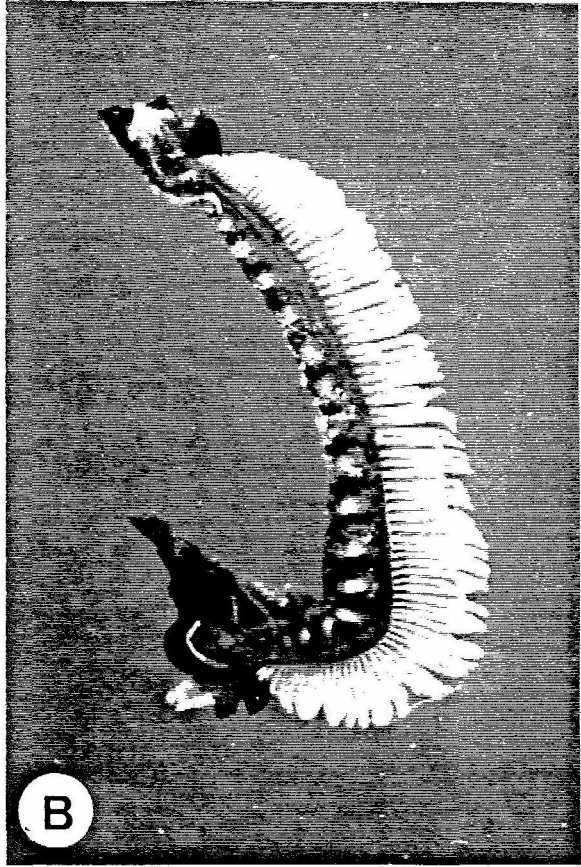
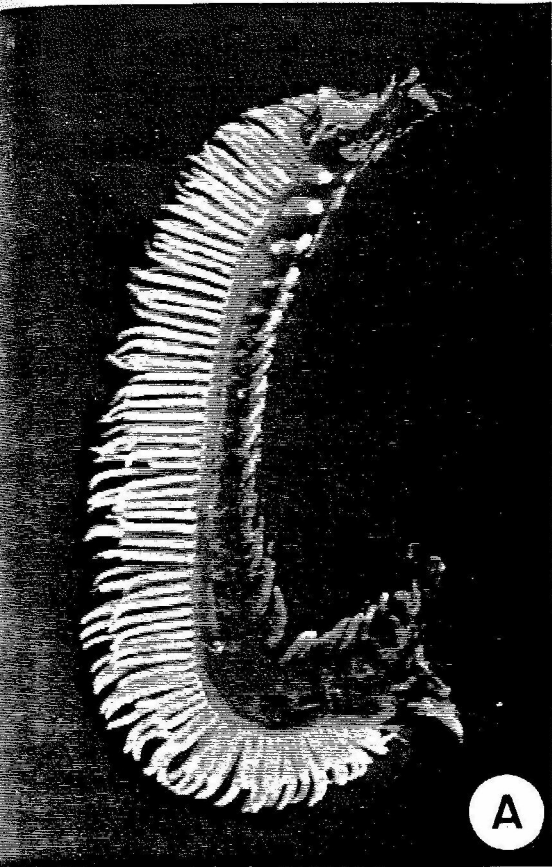


Figura 4-11.- Primer arco branquial de *Lepidion guentheri*. A: cara anterior; B: cara posterior.

Figura 4-12.- Primer arco branquial de *Lepidion lepidion*. A: cara anterior; B: cara posterior.

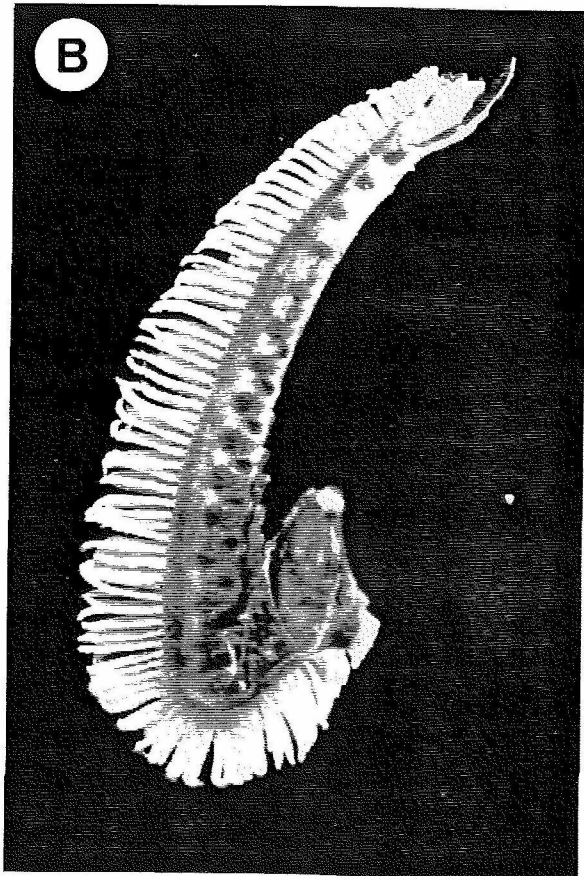
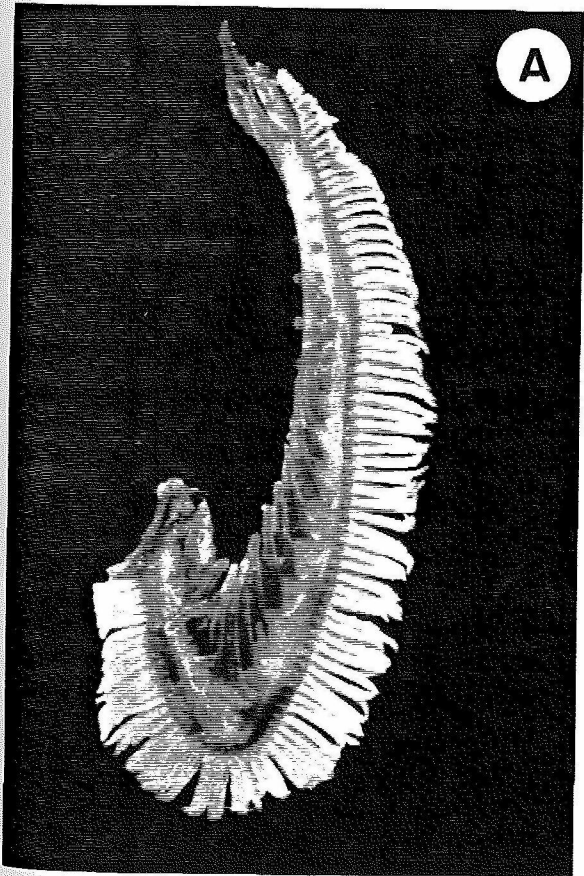
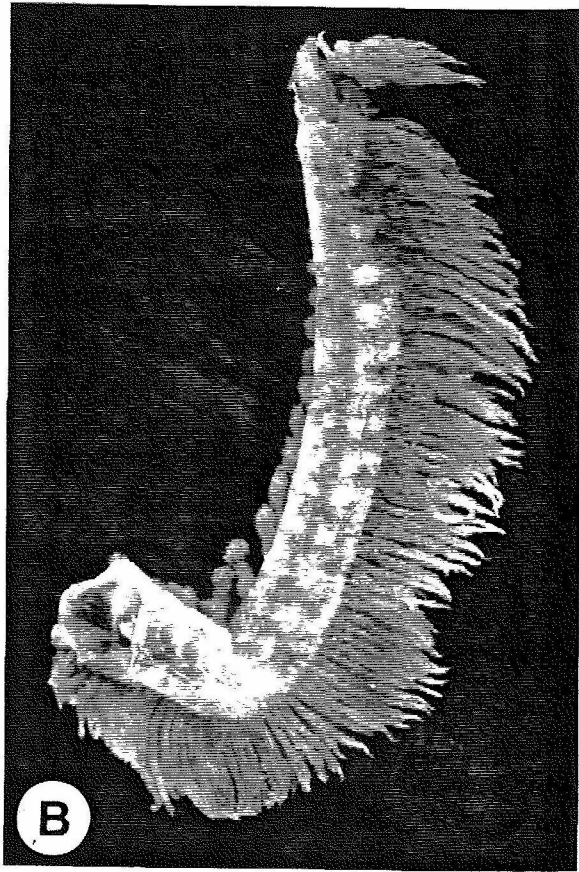
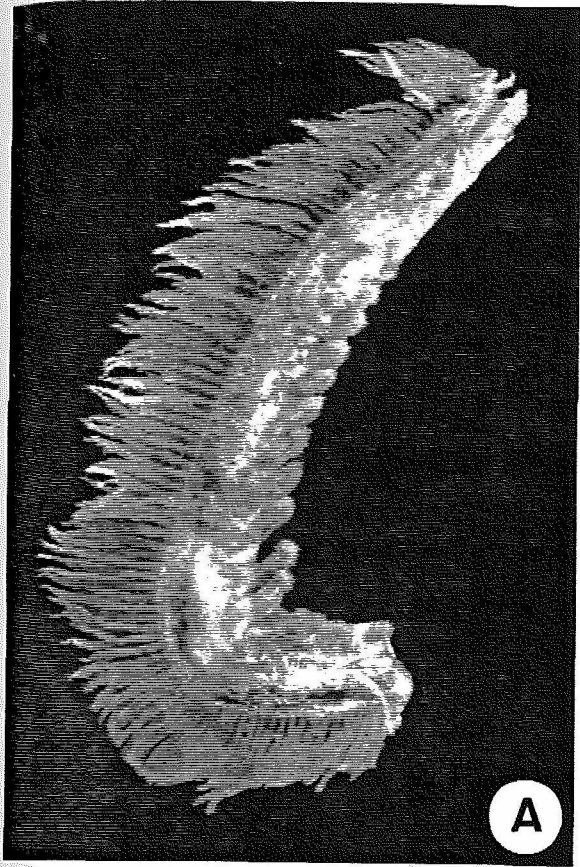


Figura 4-13.- Primer arco branquial de *Mora moro*. A: cara anterior; B: cara posterior.

Figura 4-14.- Primer arco branquial de *Melanostigma atlanticum*. A: cara anterior; B: cara posterior.

