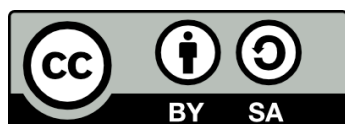




UNIVERSITAT_{DE}
BARCELONA

Enantioselectivitat en sistemes líquids bifàsics

Núria Rubio Esplugas

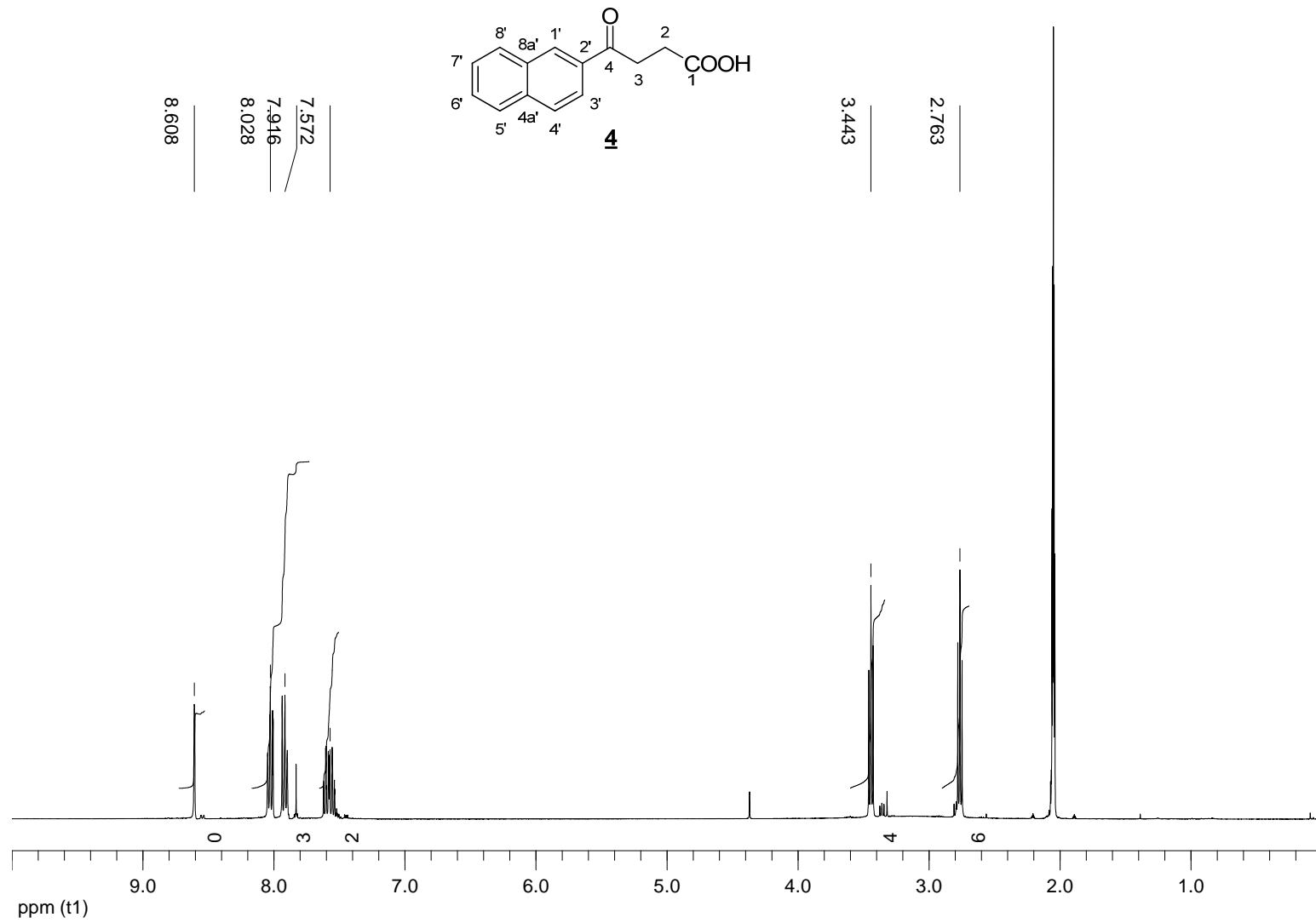


Aquesta tesi doctoral està subjecta a la llicència **Reconeixement- Compartigual 4.0. Espanya de Creative Commons.**

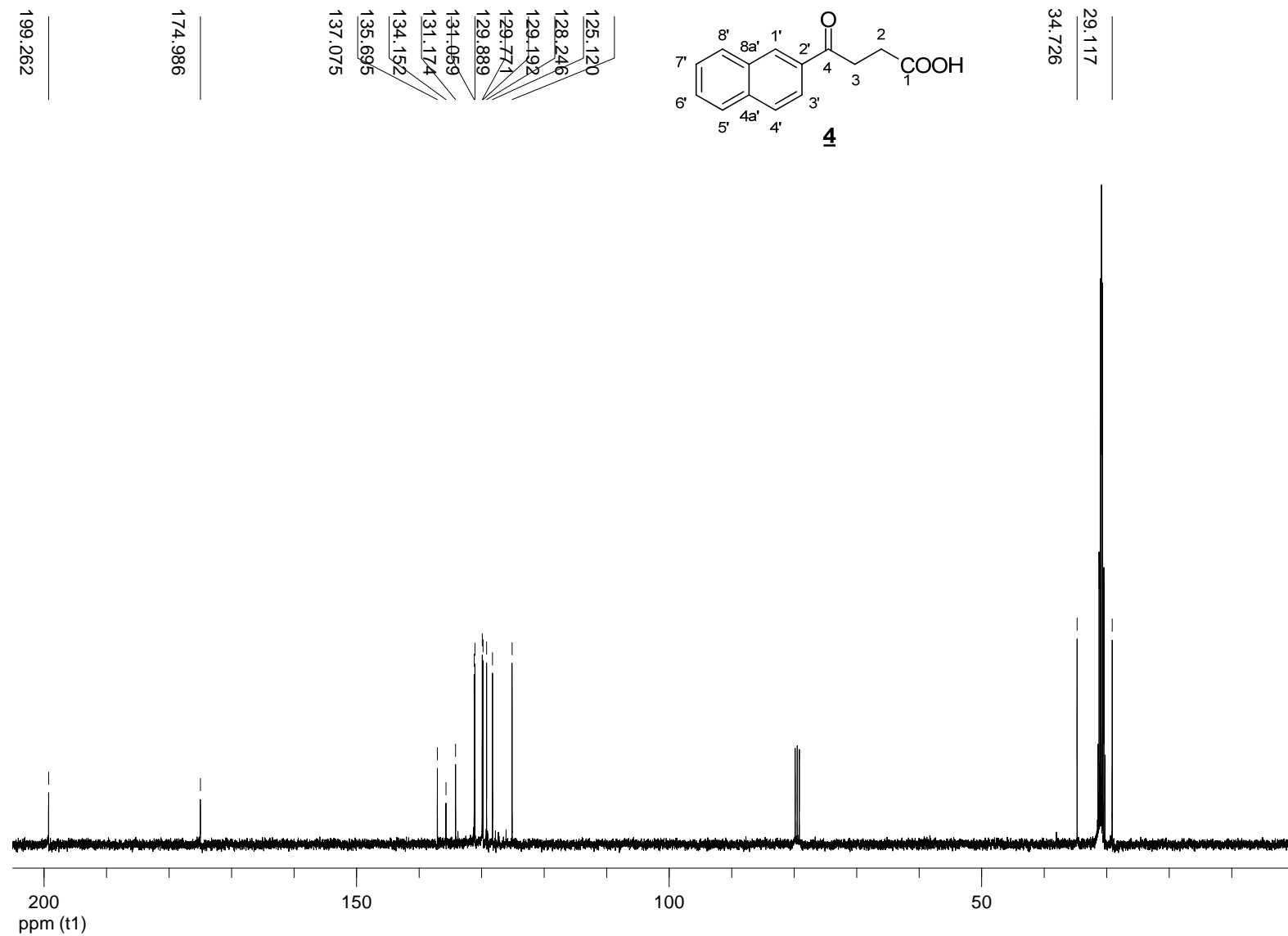
Esta tesis doctoral está sujeta a la licencia **Reconocimiento - Compartigual 4.0. España de Creative Commons.**

This doctoral thesis is licensed under the **Creative Commons Attribution-ShareAlike 4.0. Spain License.**

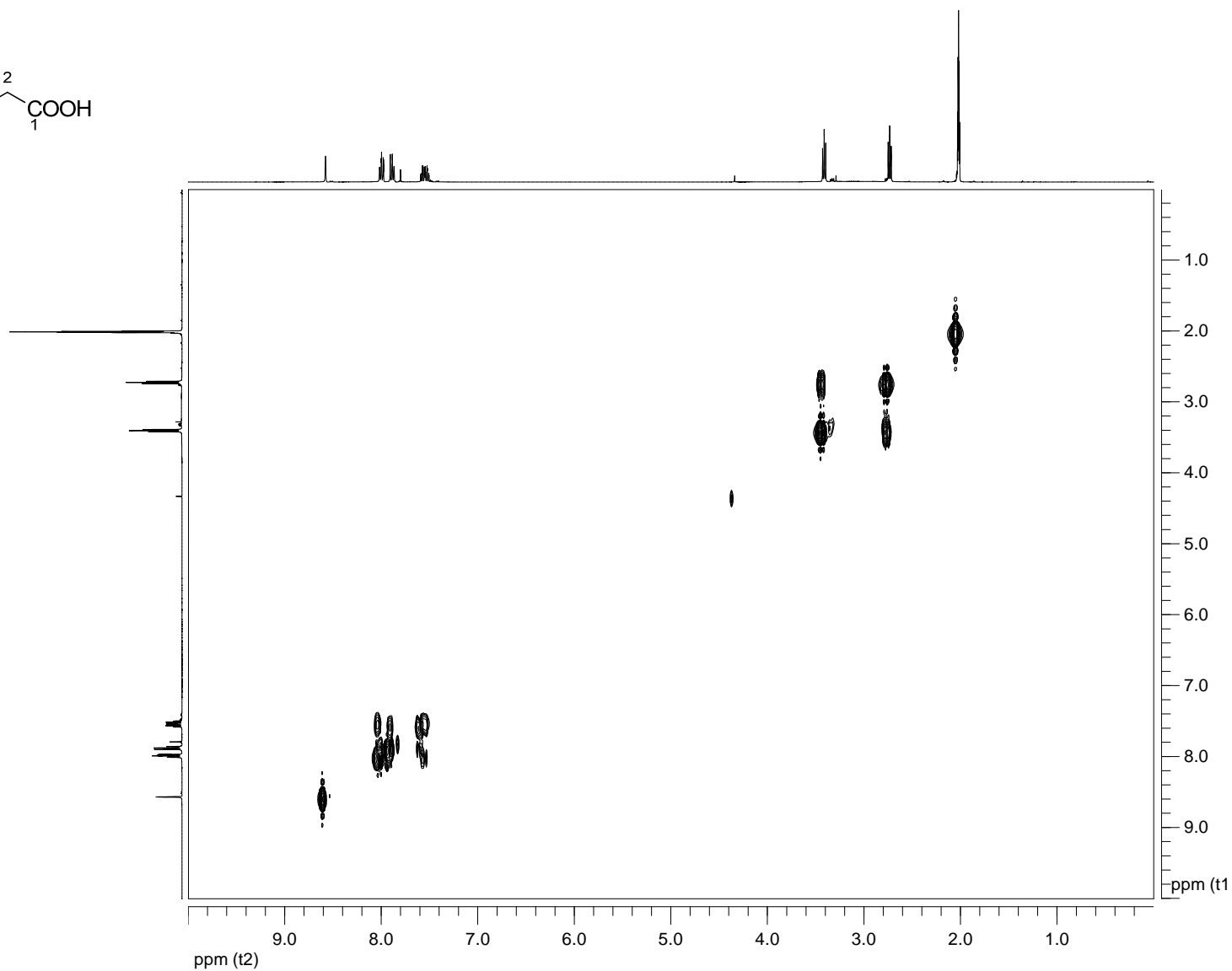
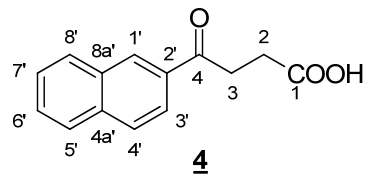
ANNEX I. ESPECTRES RESSONANCIA MAGNÈTICA NUCLEAR (RMN)



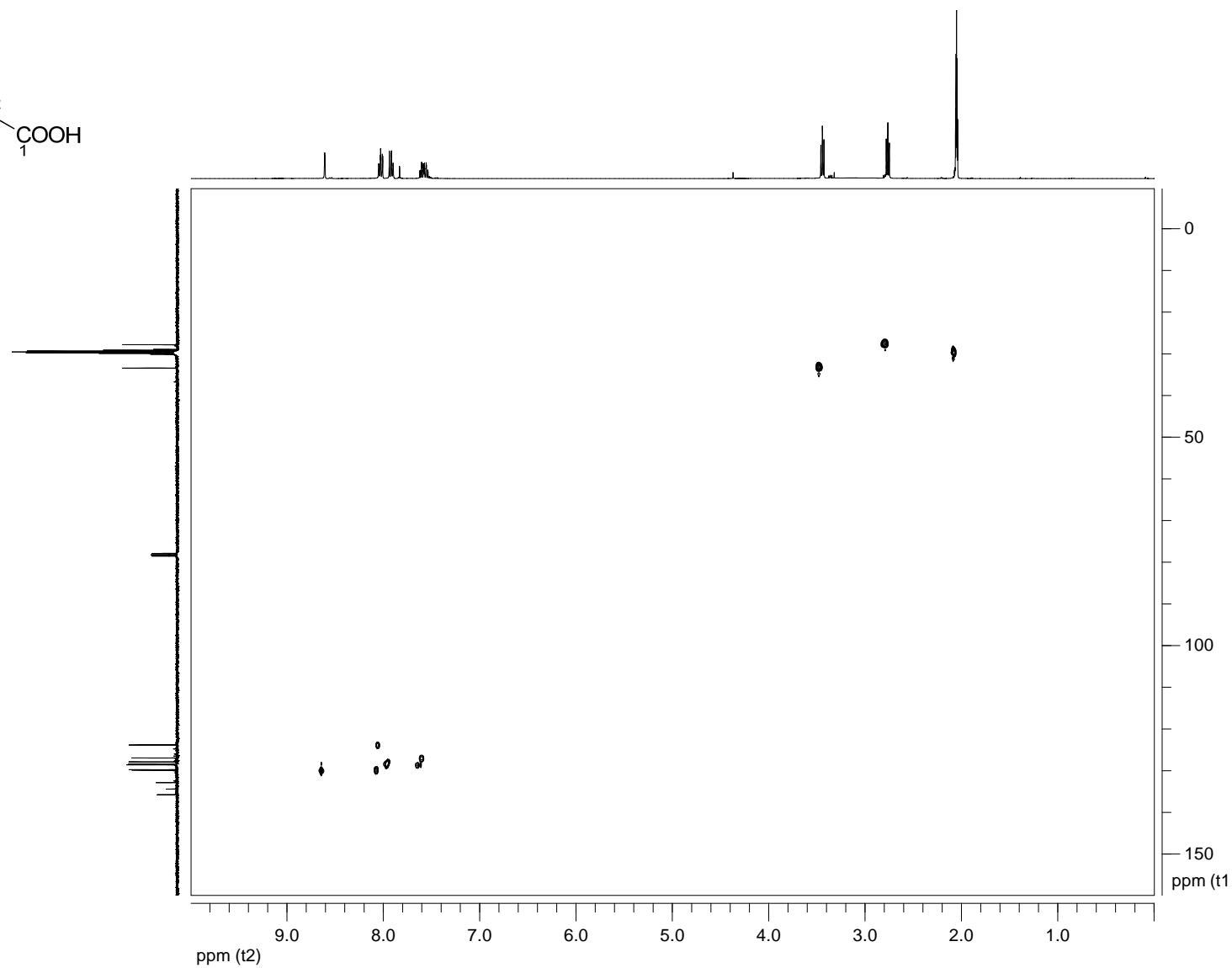
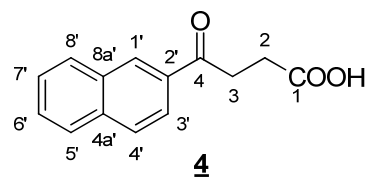
¹H RMN (400 MHz, acetona-d₆)

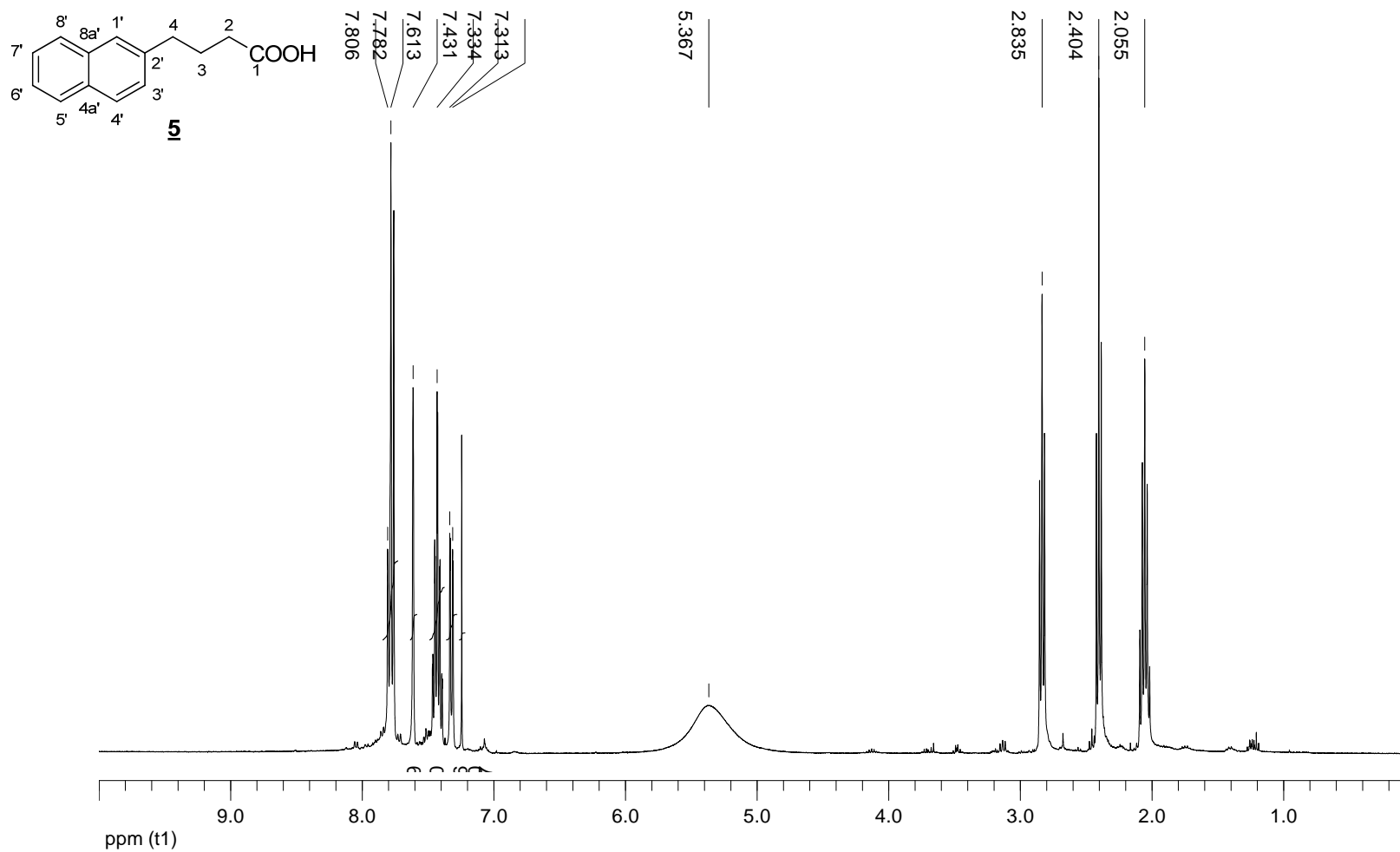


¹³C RMN (100.6 MHz, acetona-d₆)

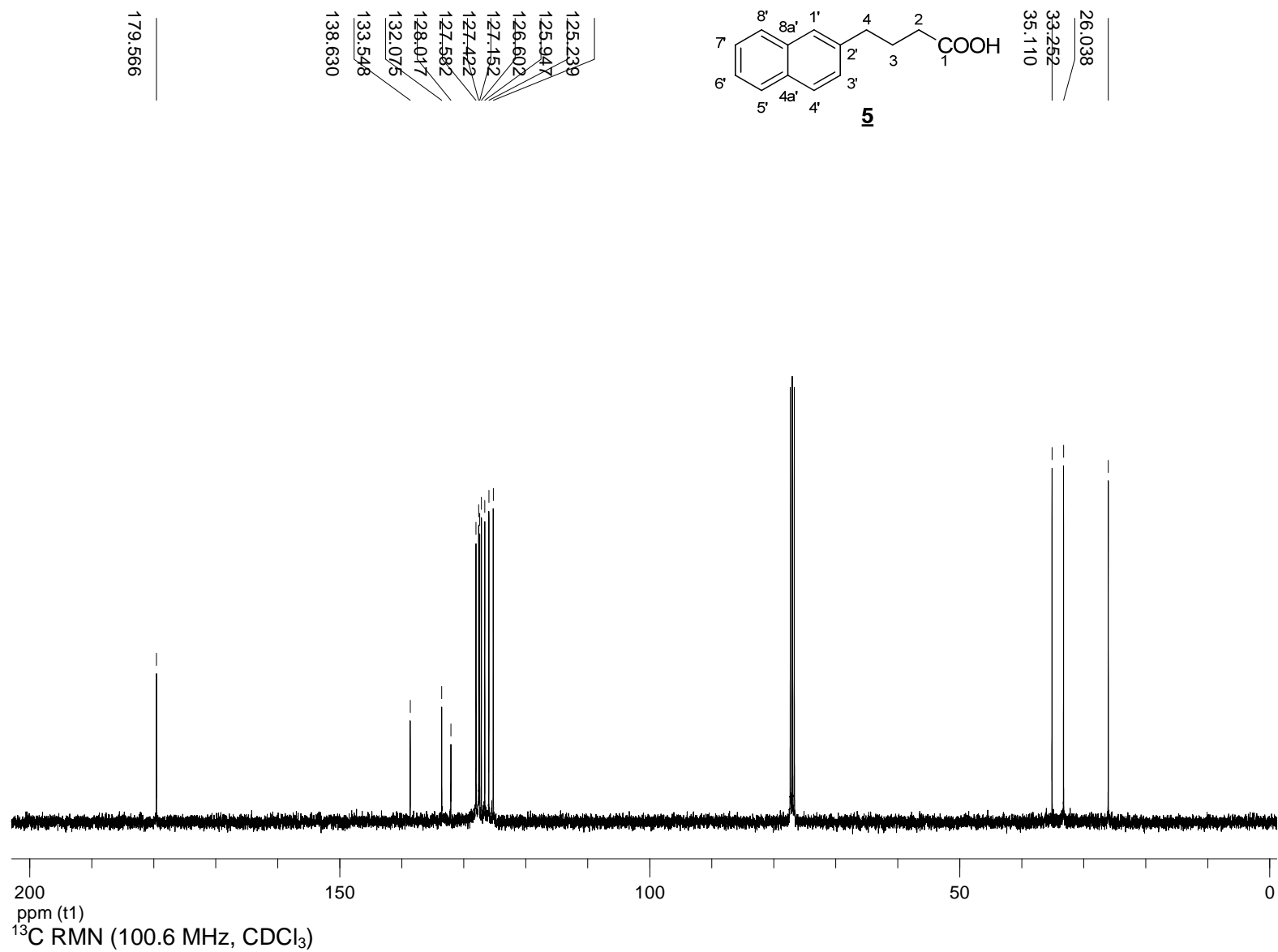


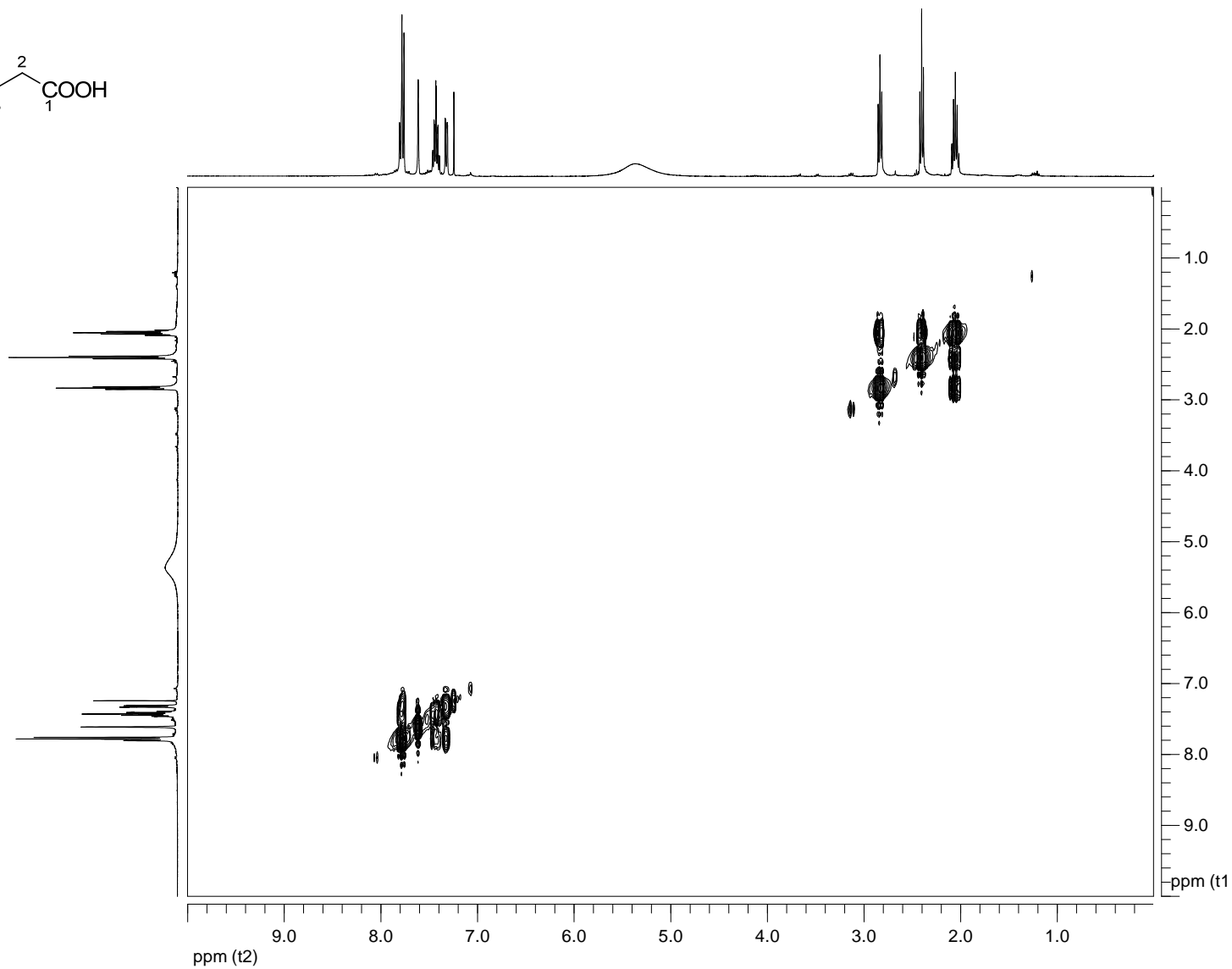
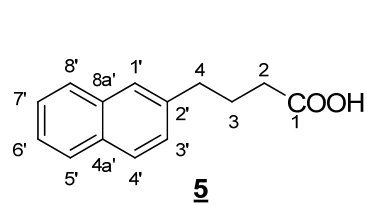
COSY RMN (400MHz, acetona-d₆)



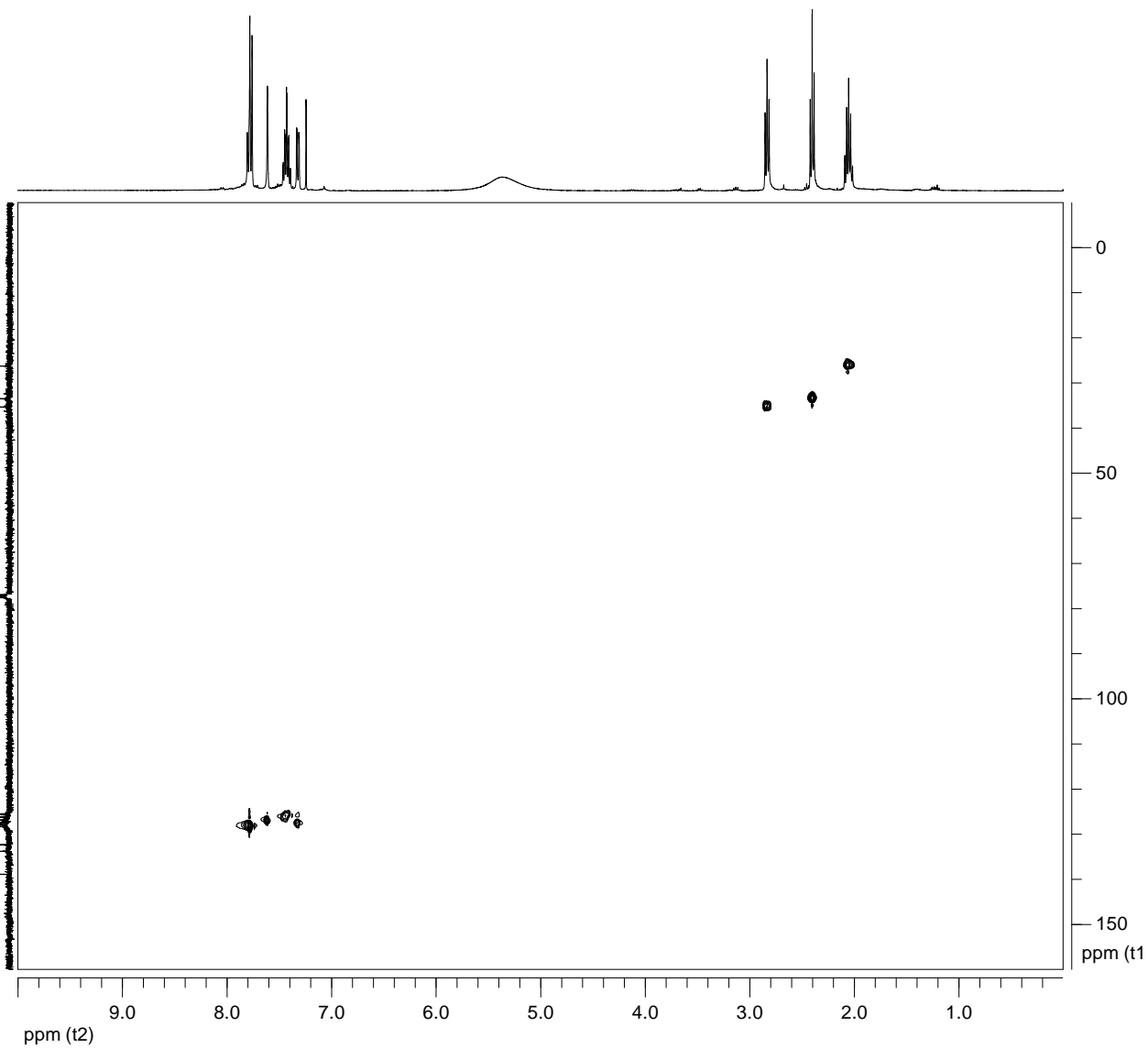
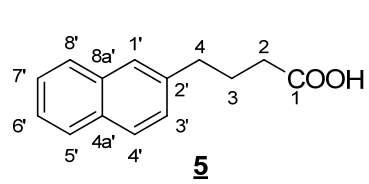


¹H RMN (400 MHz, CDCl₃)

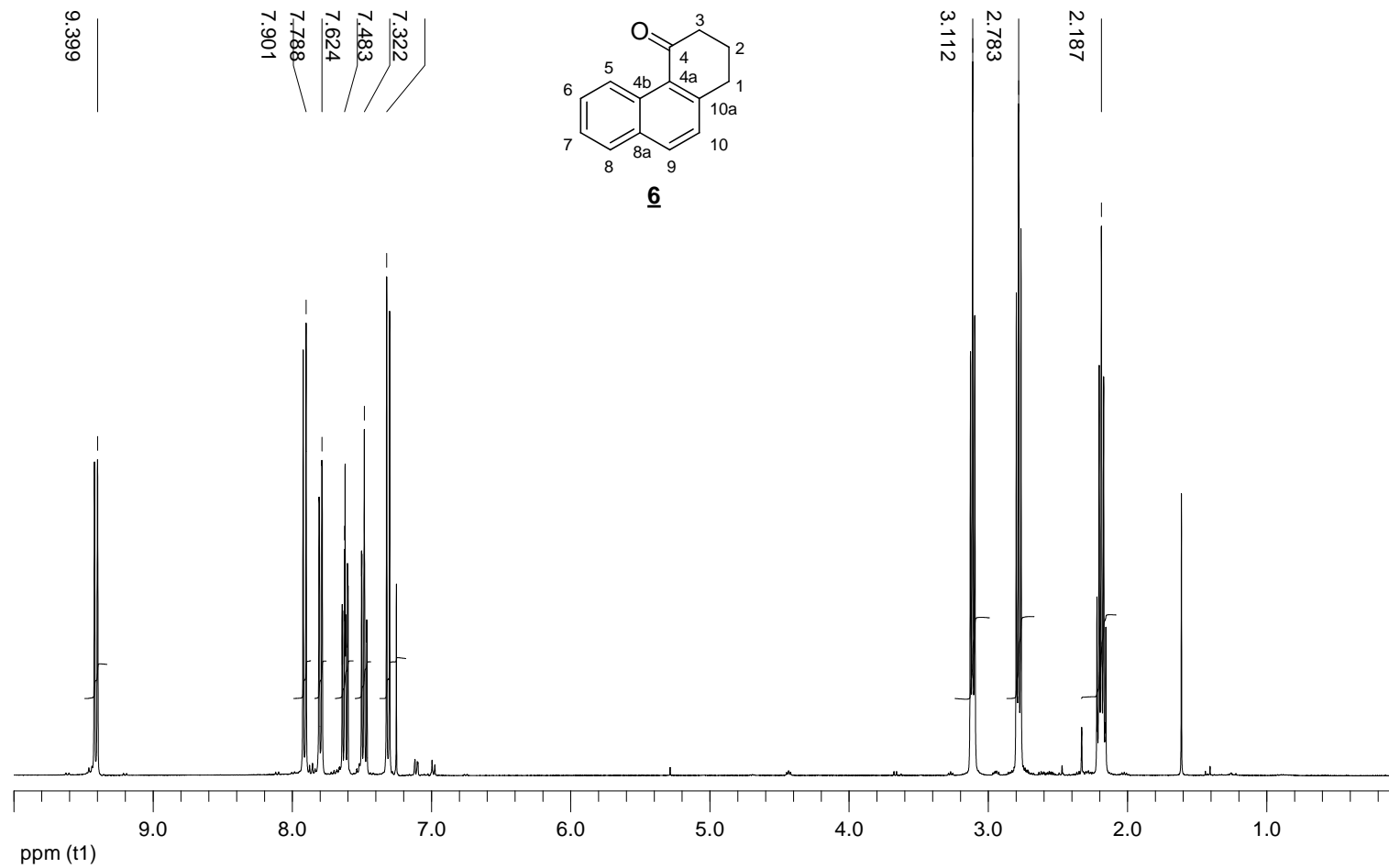




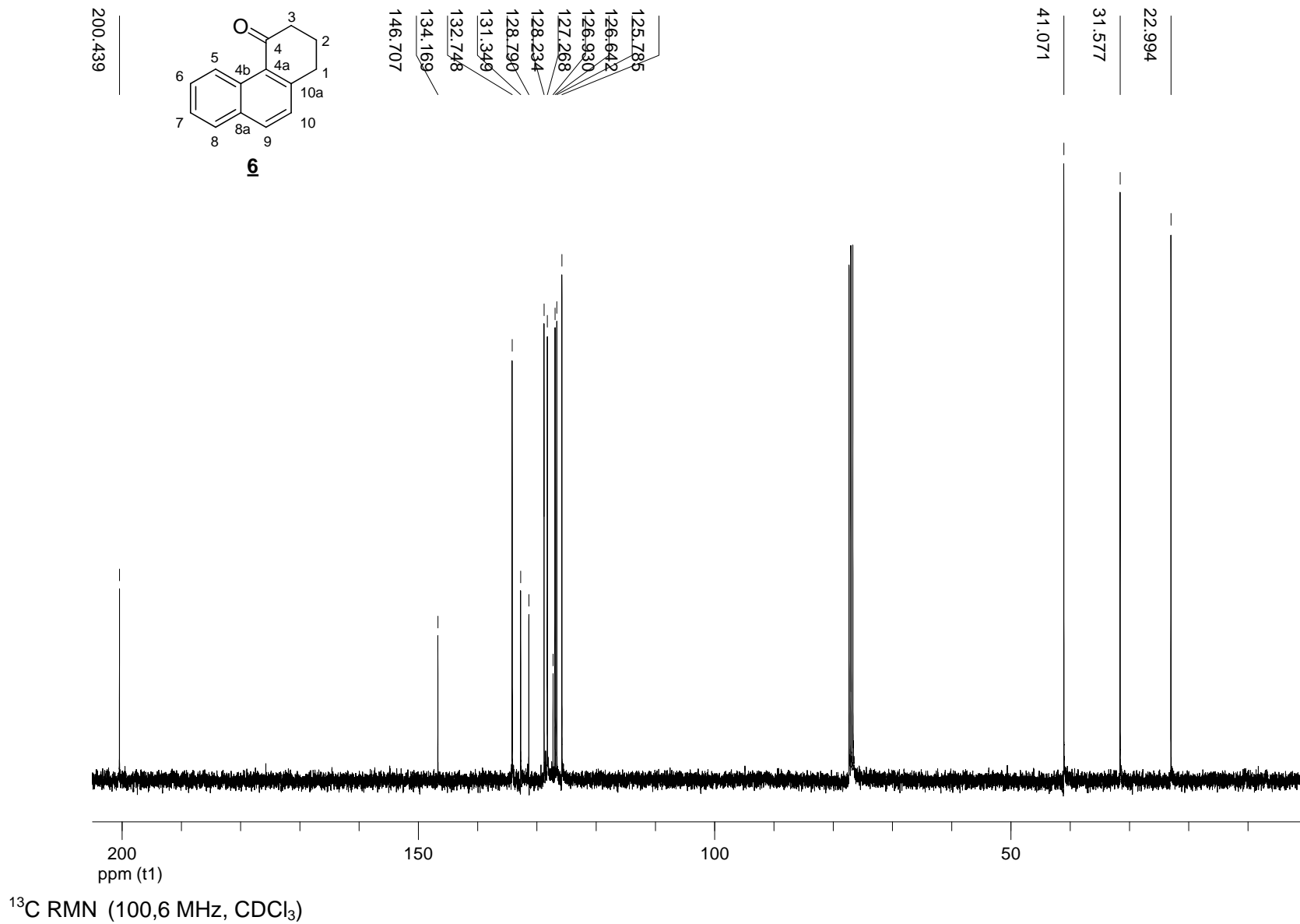
COSY RMN (400MHz, CDCl₃)

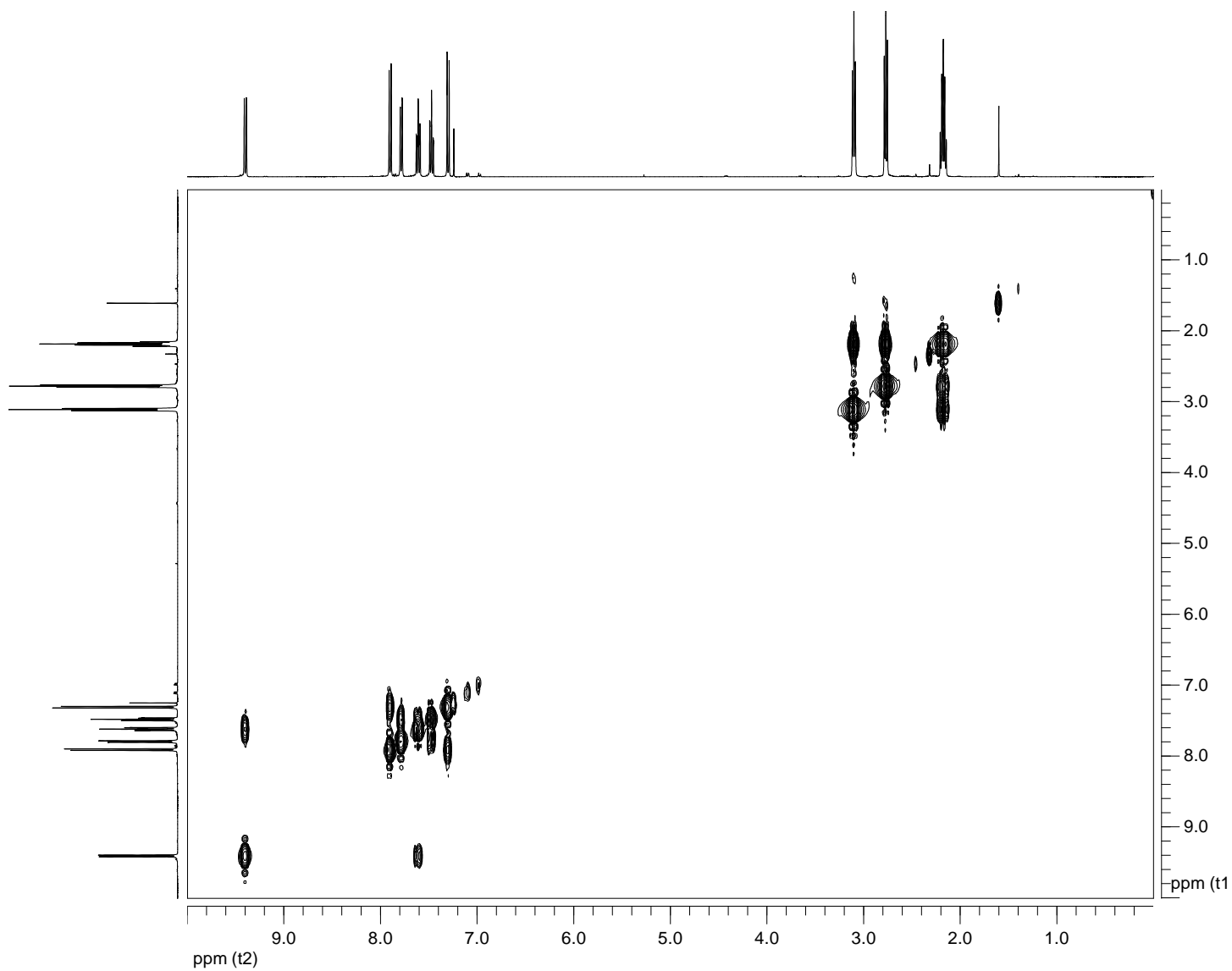
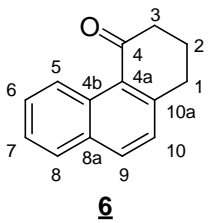


HSQC RMN (CDCl₃)

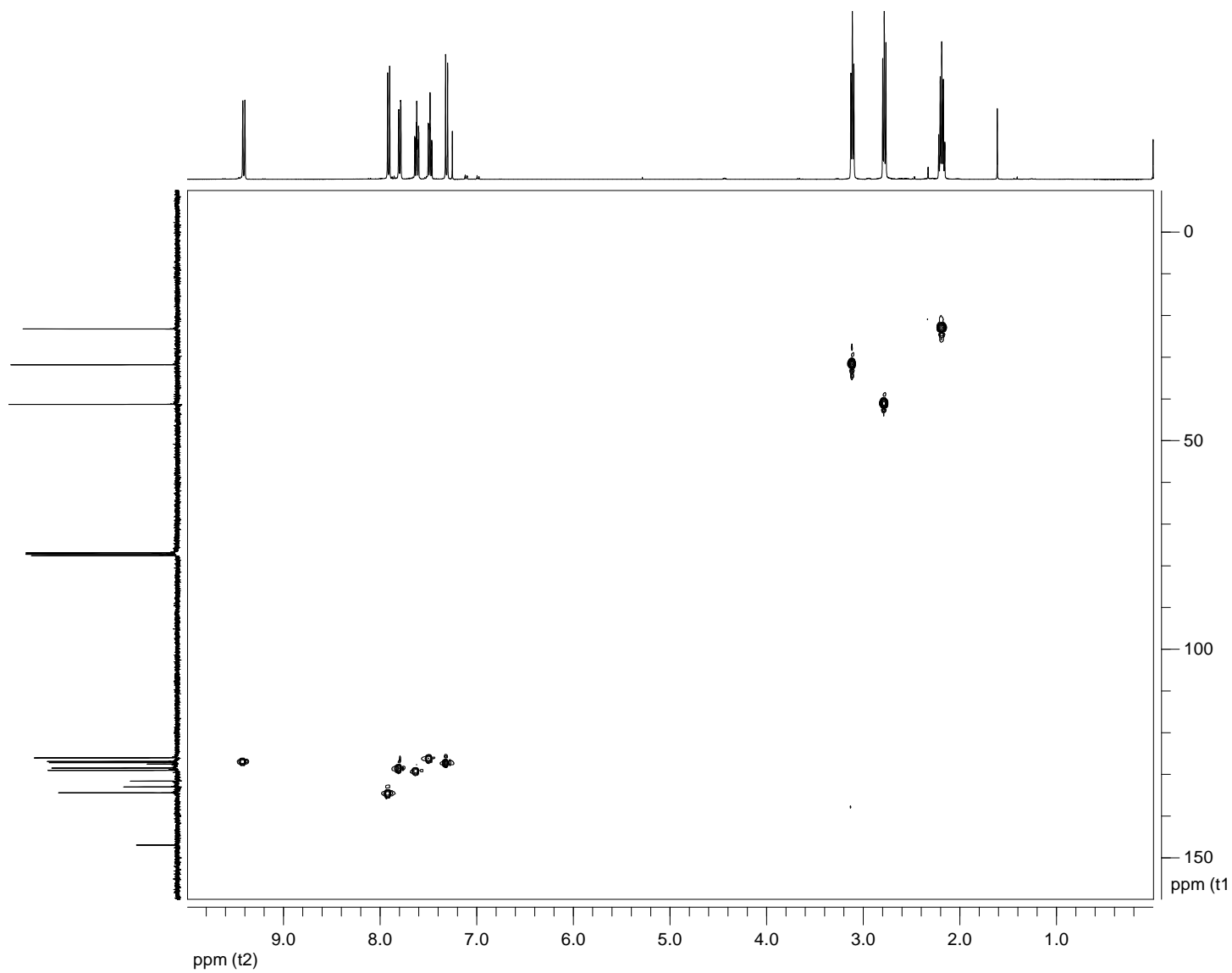
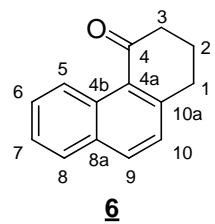


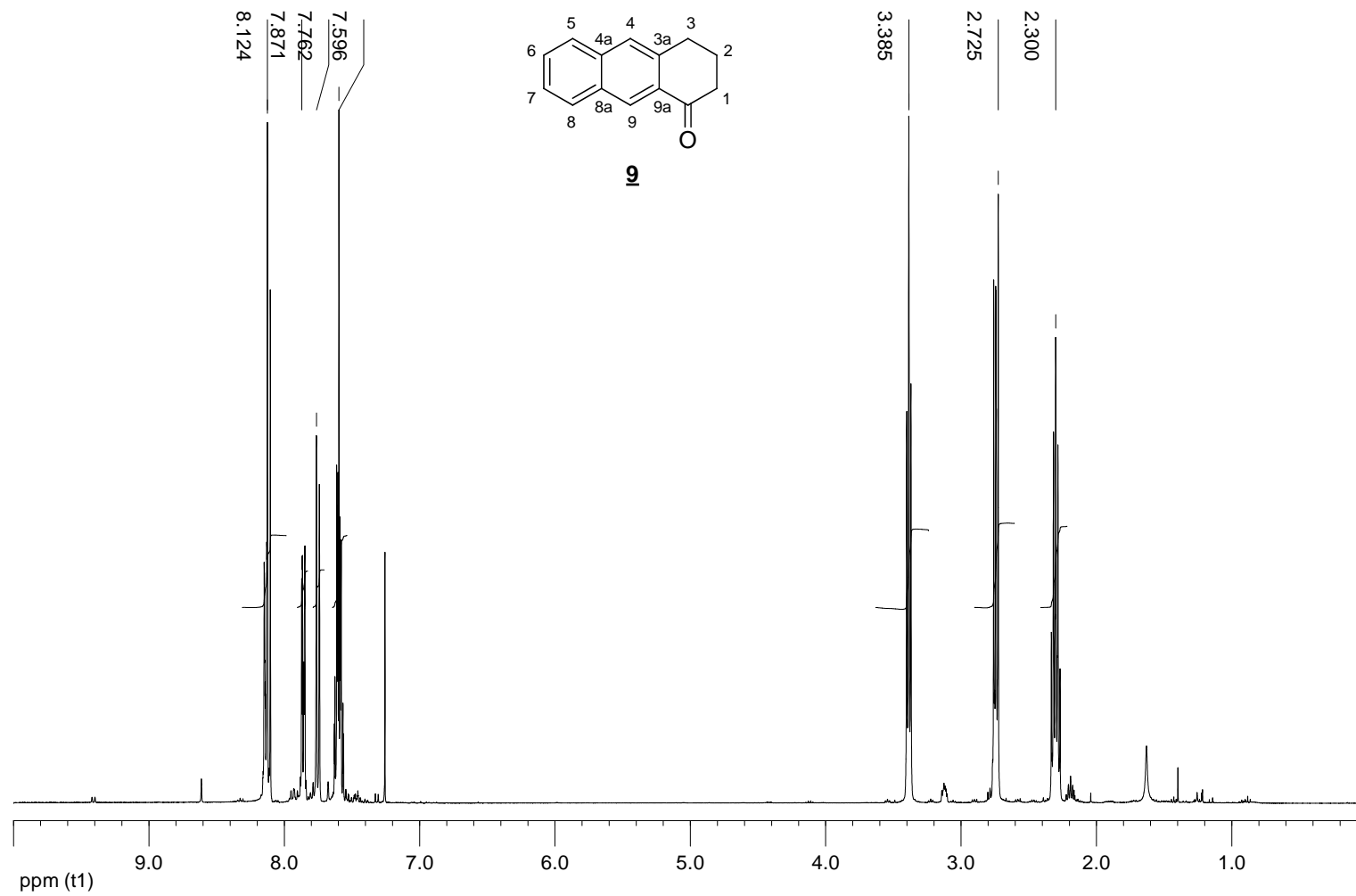
¹H RMN (400 MHz, CDCl₃)



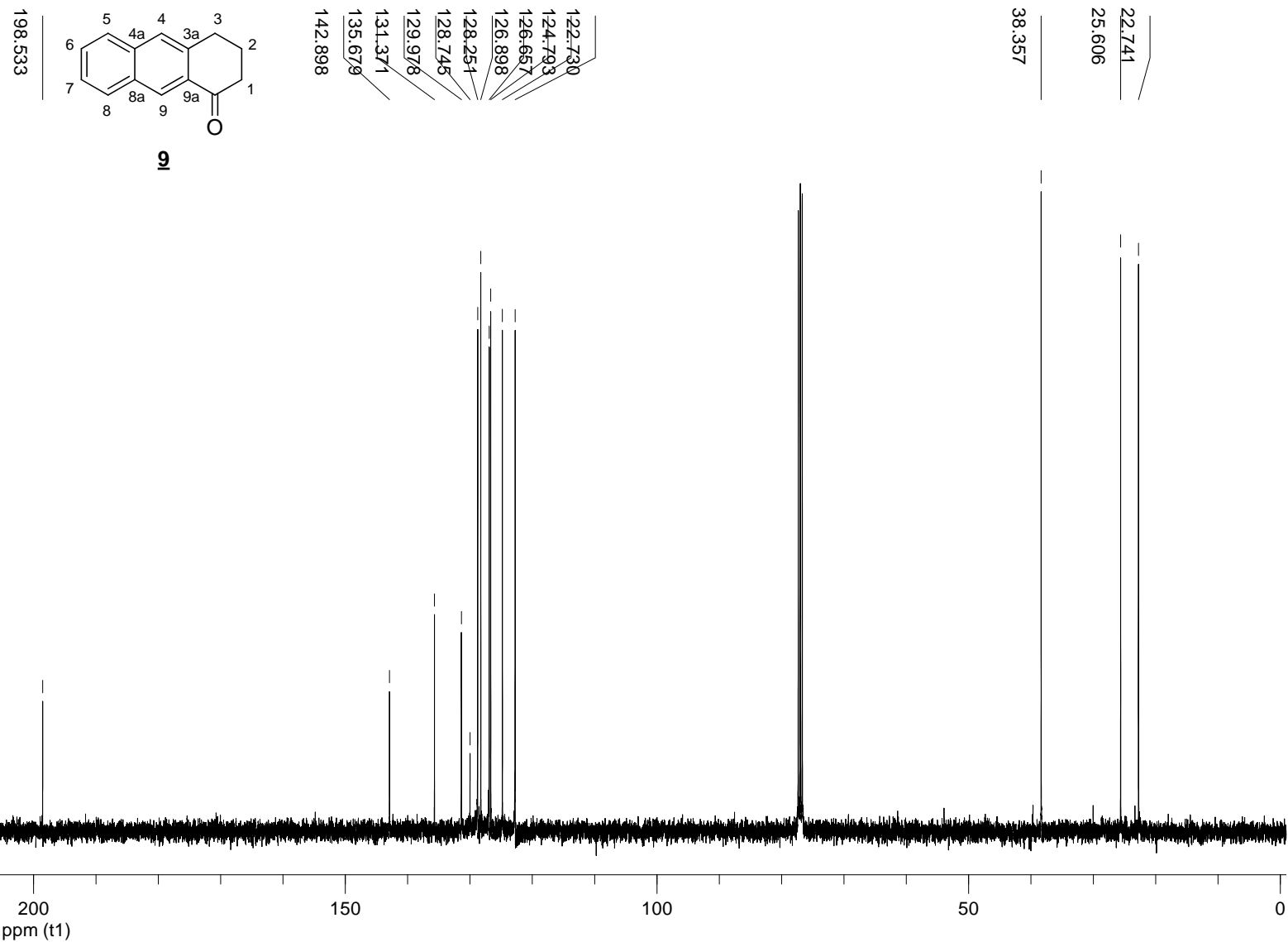


COSY RMN (400MHz, CDCl₃)

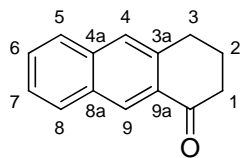




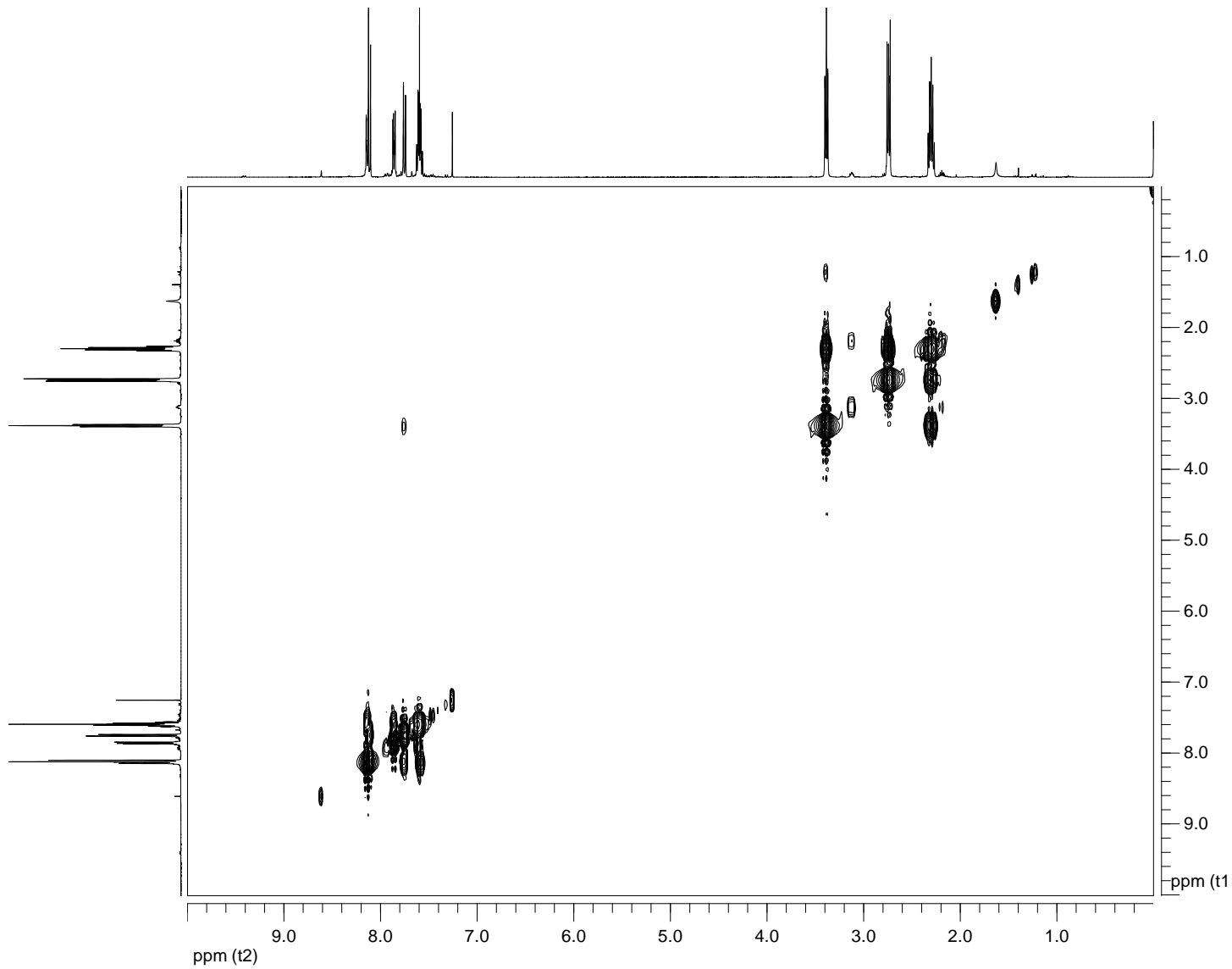
¹H RMN (400 MHz, CDCl₃)



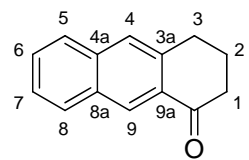
^{13}C RMN (100,6 MHz, CDCl_3)



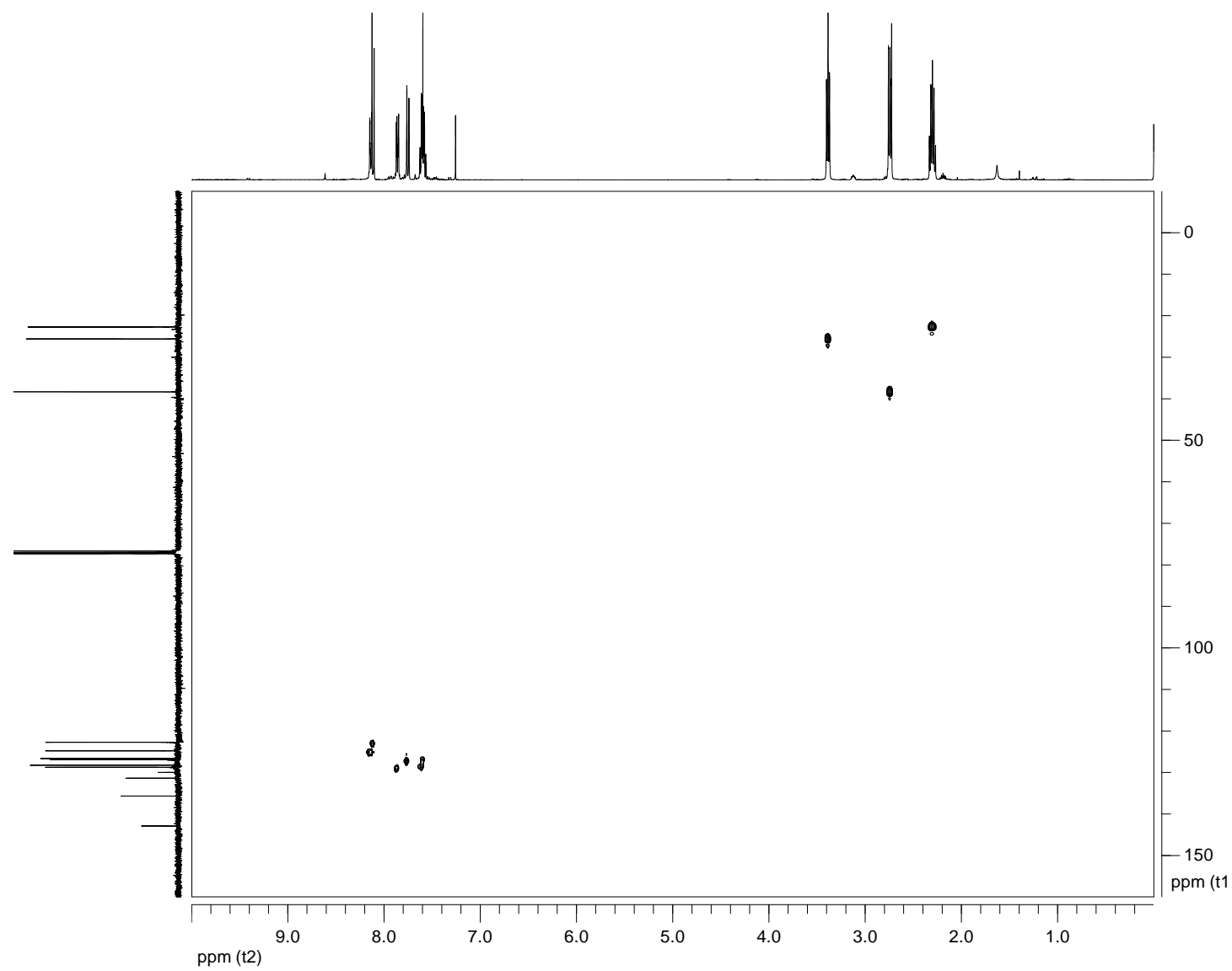
19



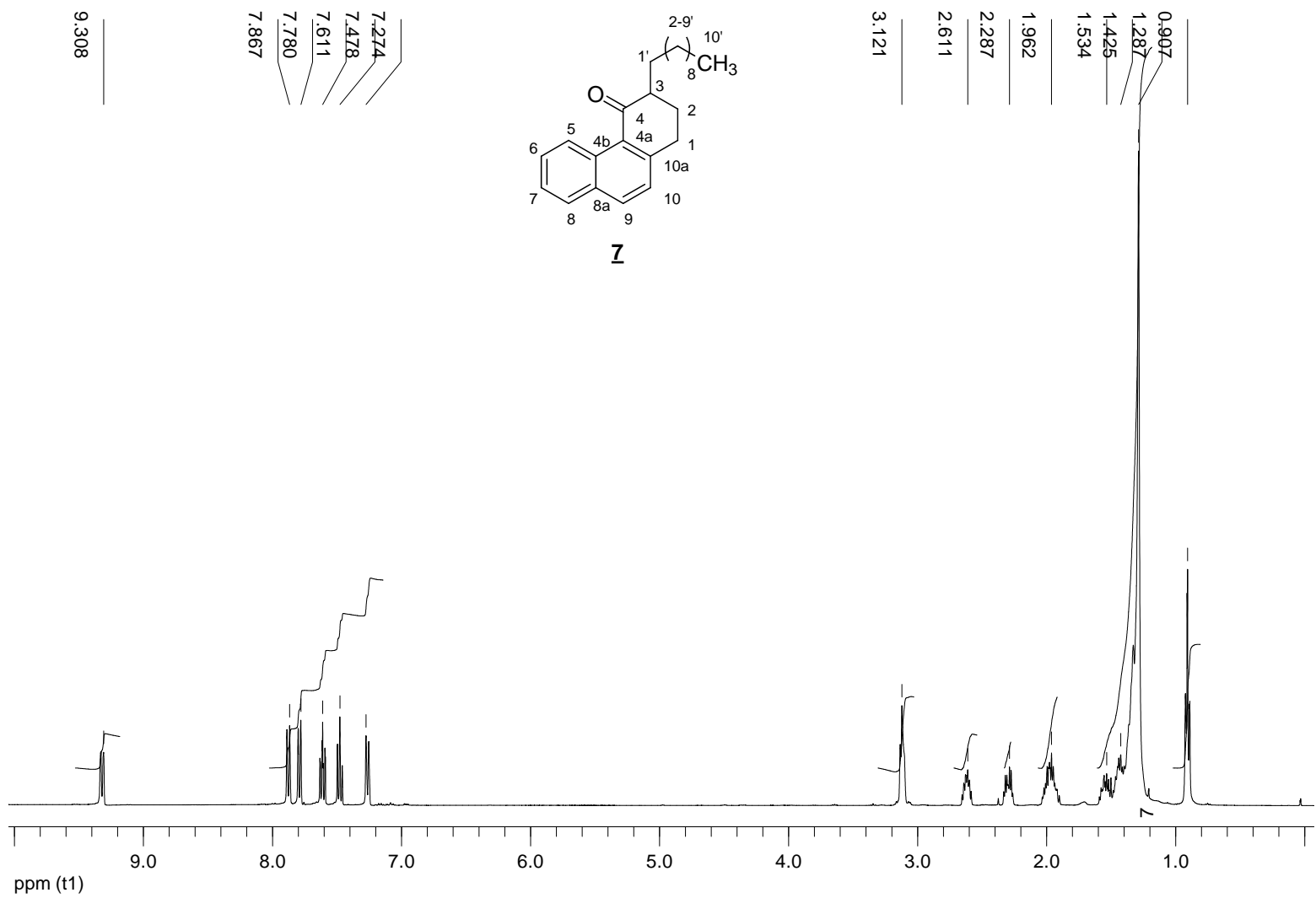
COSY RMN (400MHz, CDCl_3)



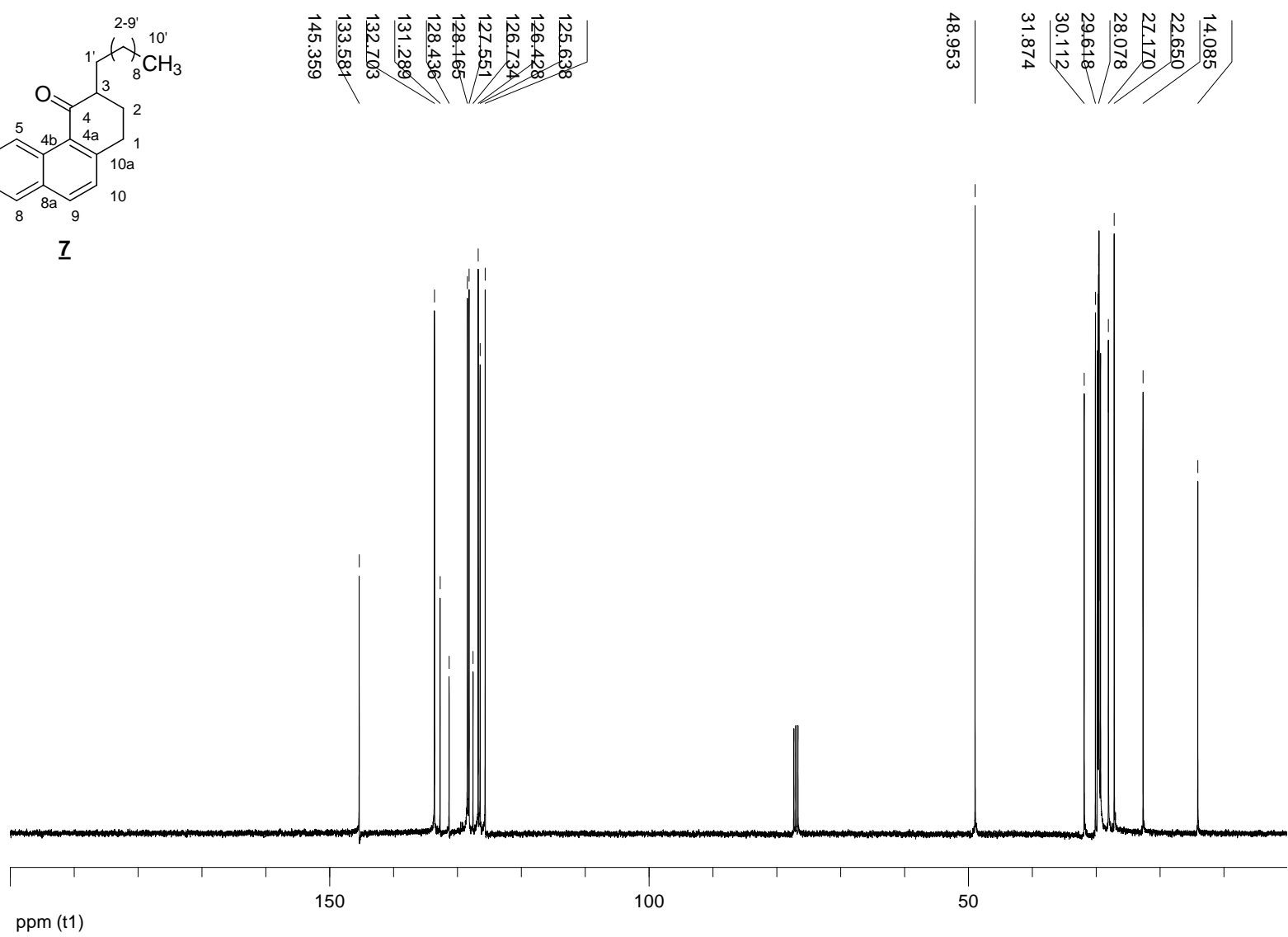
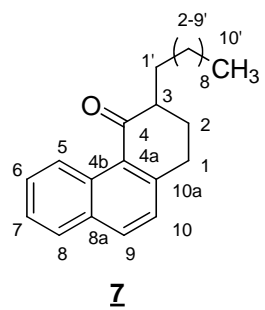
9



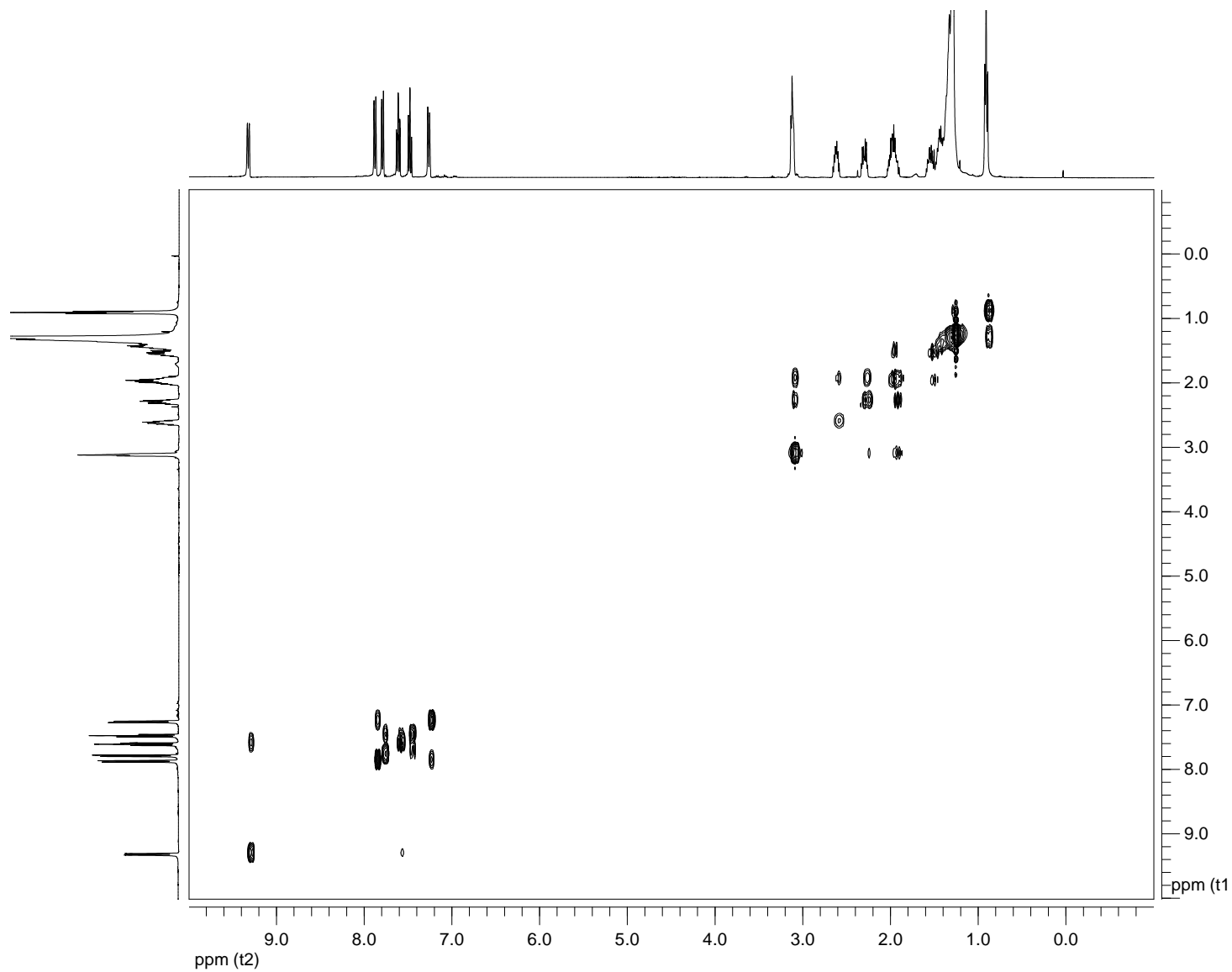
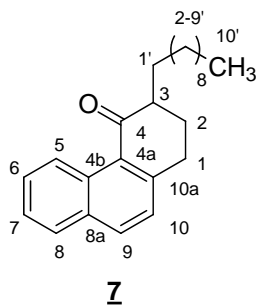
HSQC RMN (CDCl₃)



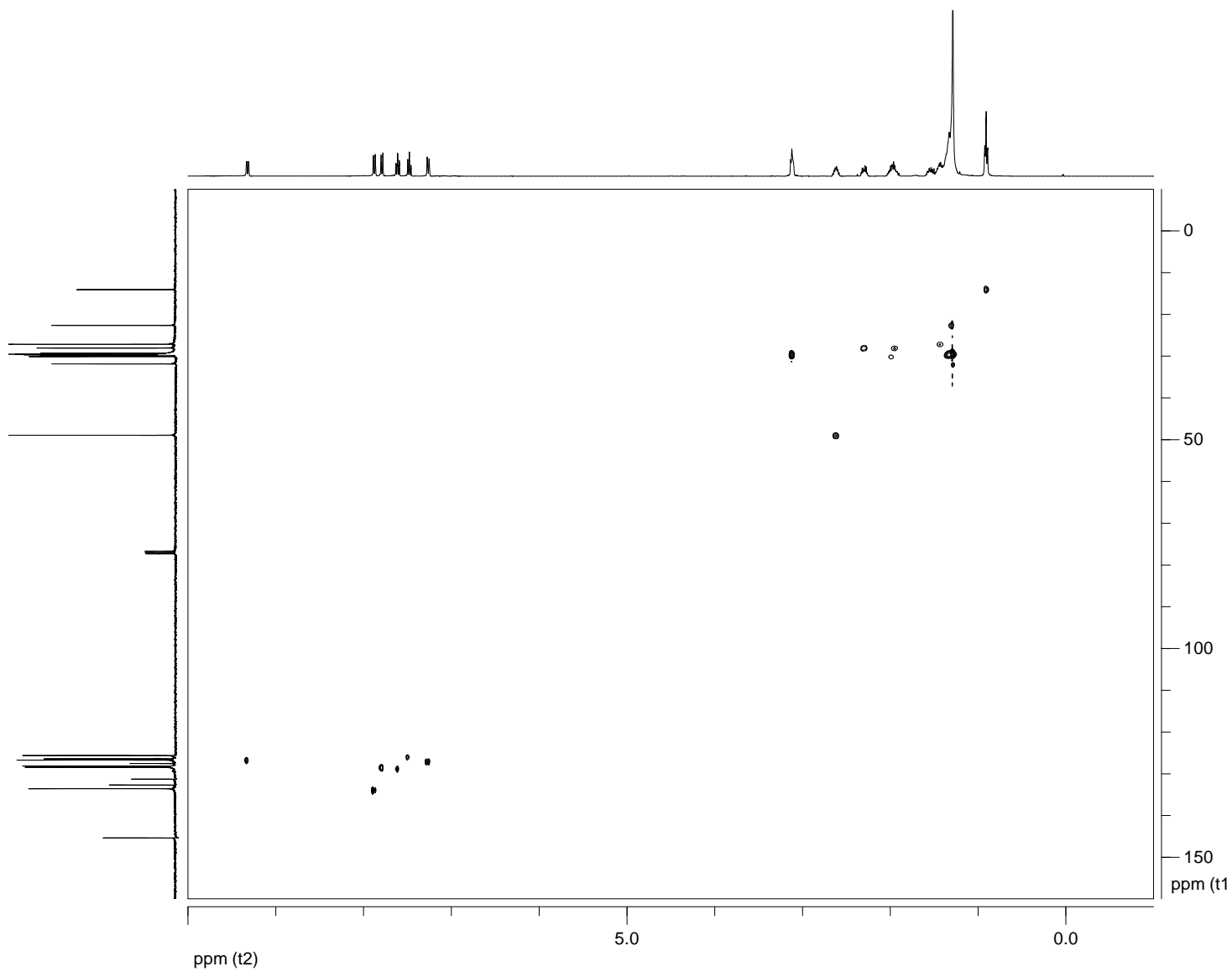
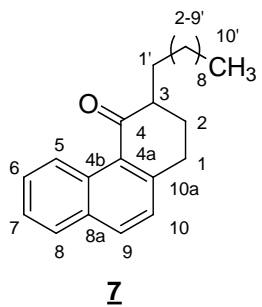
^1H RMN (400 MHz, CDCl_3)



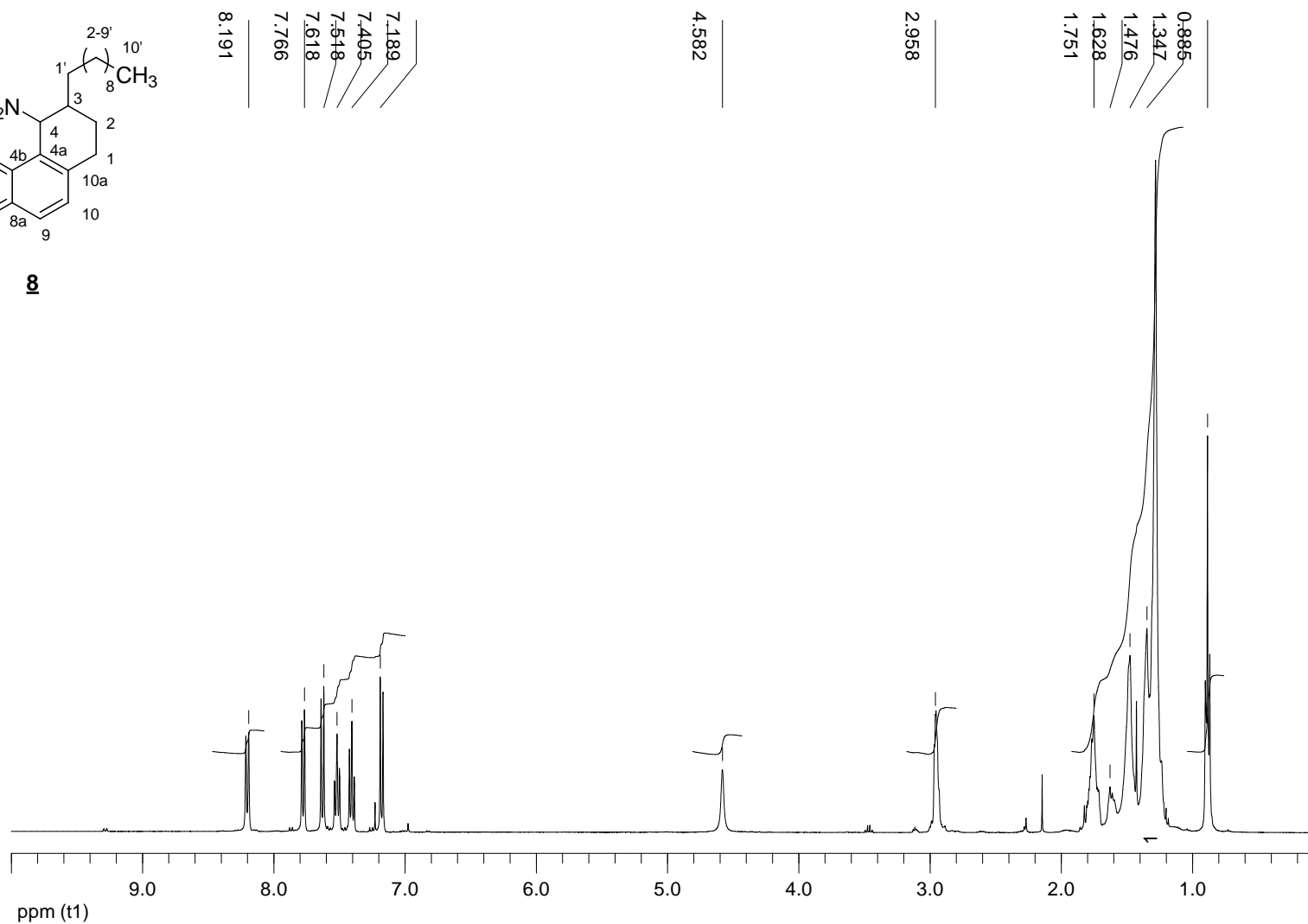
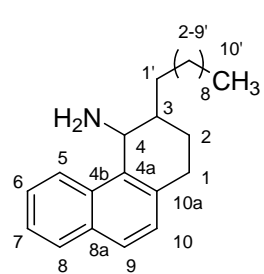
^{13}C RMN (100,6 MHz, CDCl_3)



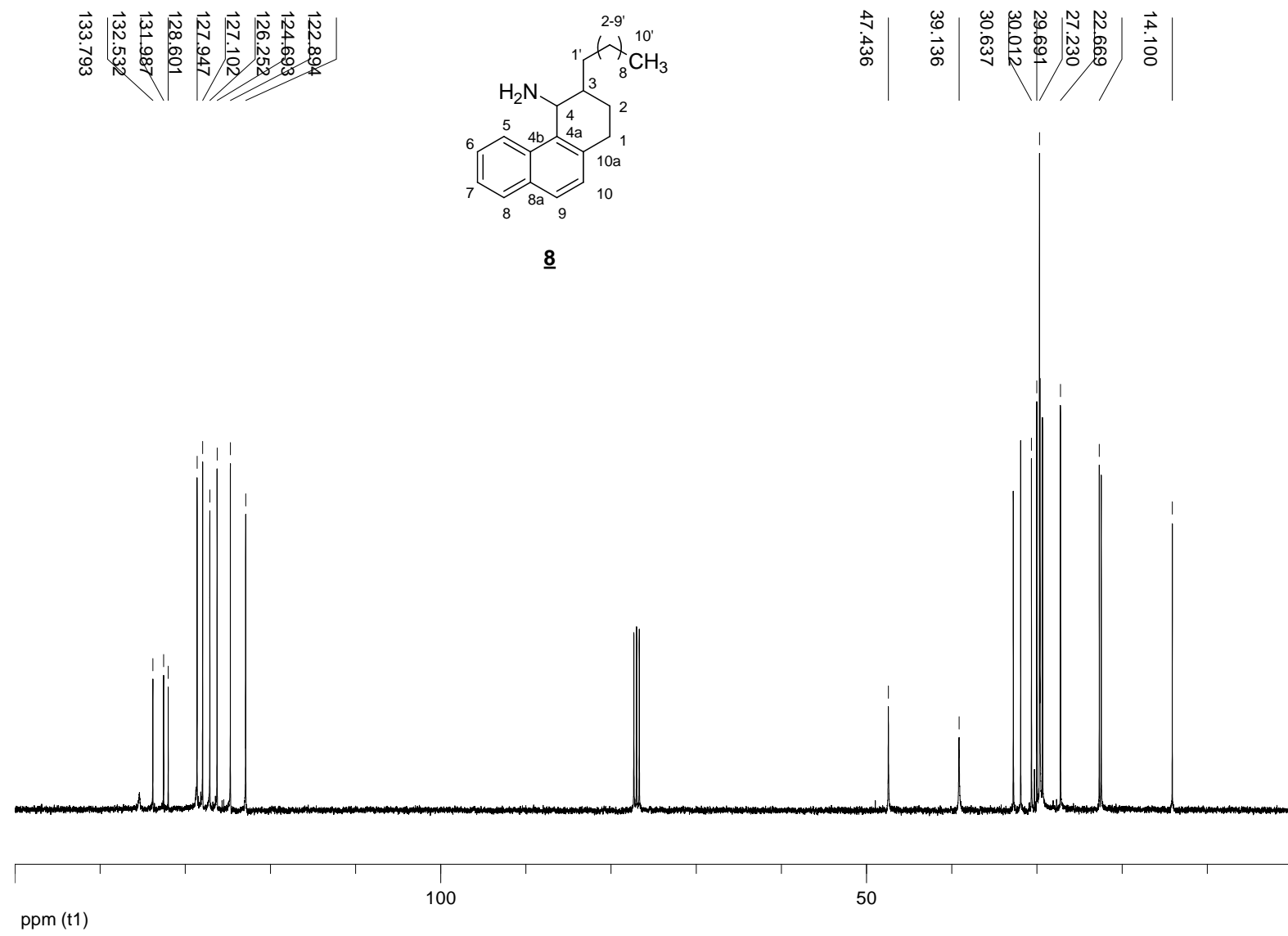
COSY RMN (400MHz, CDCl₃)



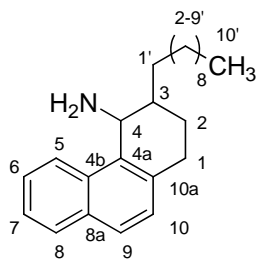
HSQC RMN (CDCl₃)



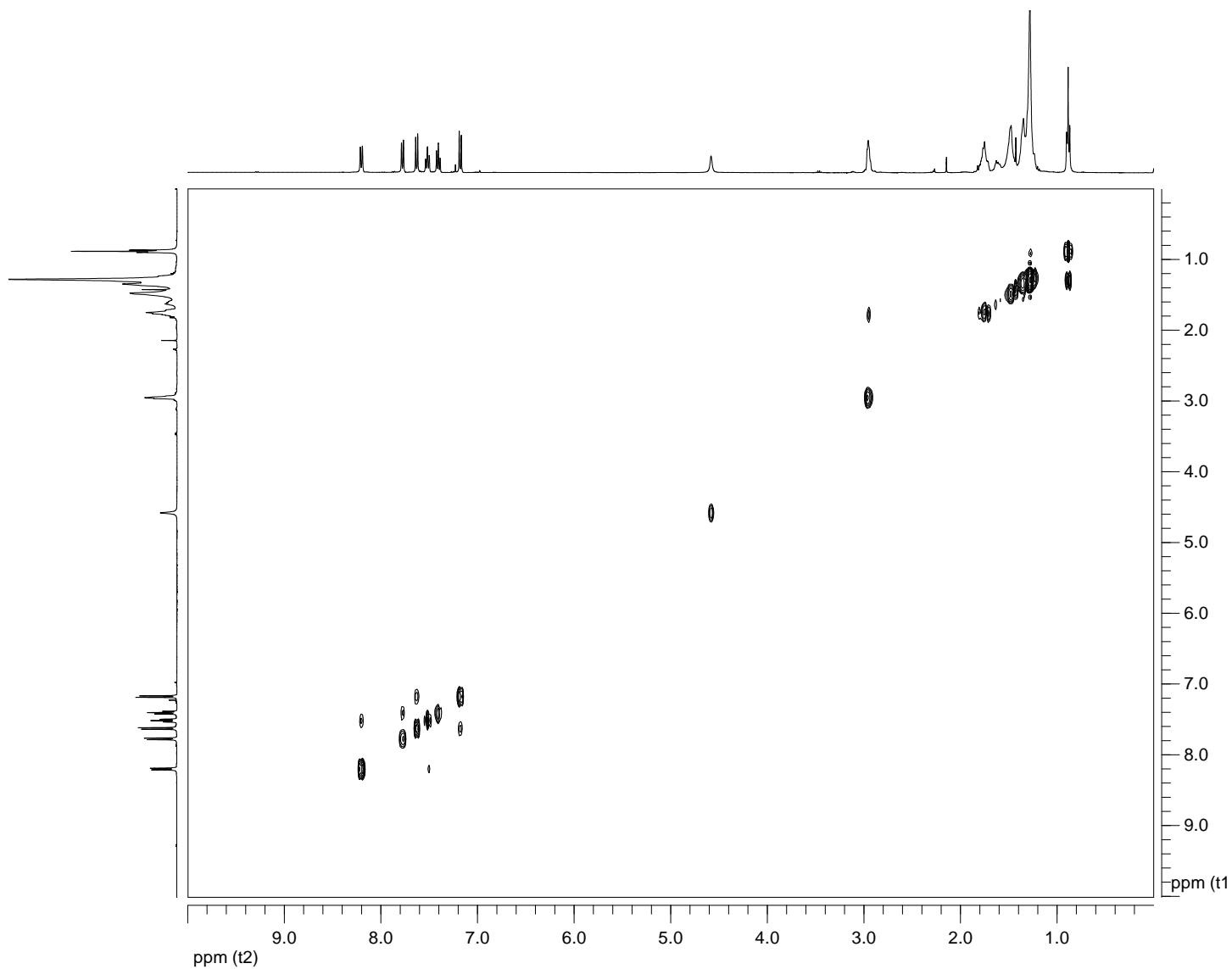
^1H RMN (400 MHz, CDCl_3)



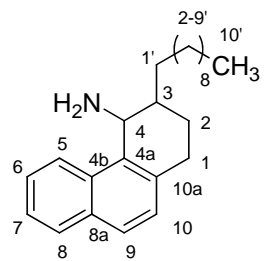
^{13}C RMN (100,6 MHz, CDCl_3)



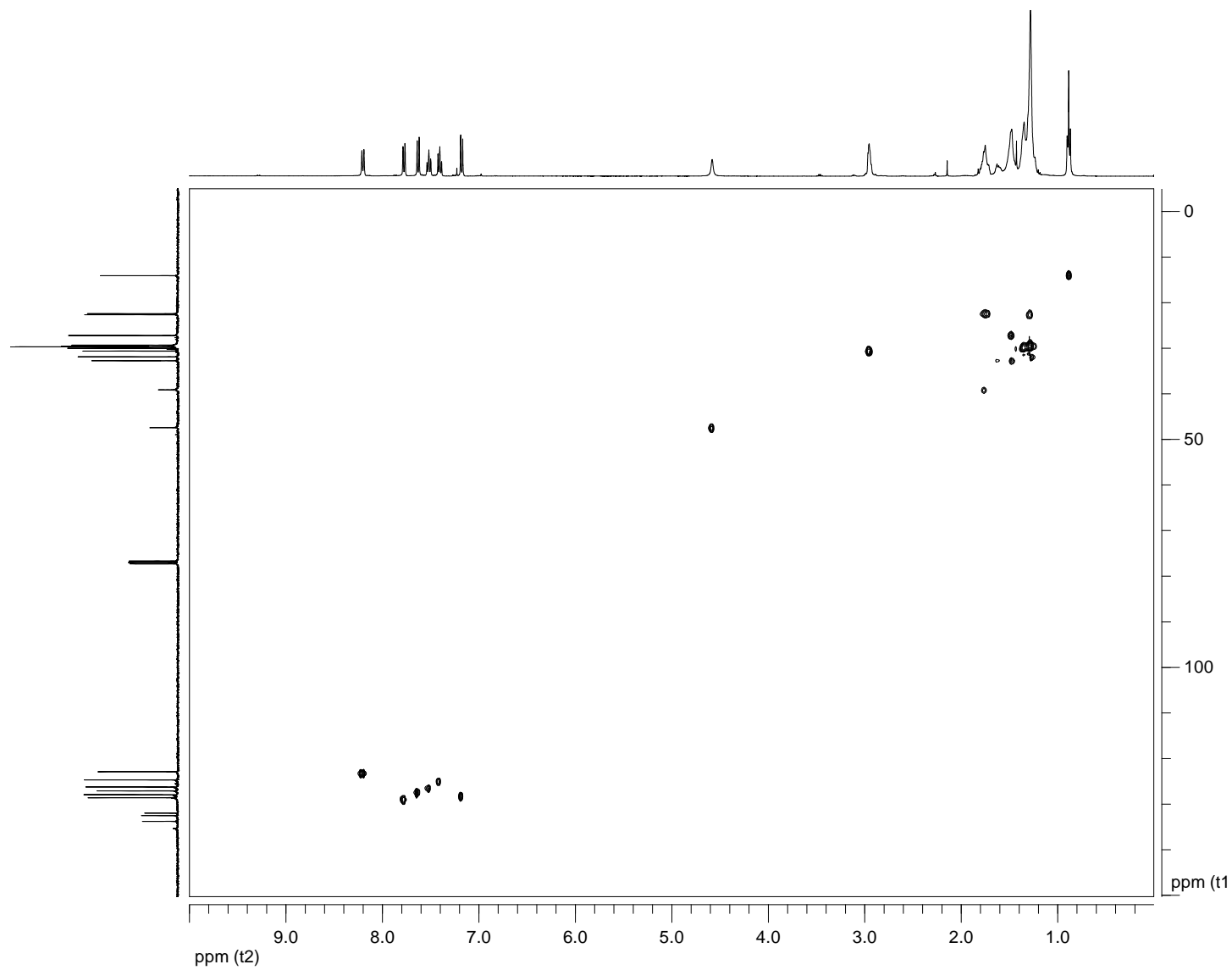
18



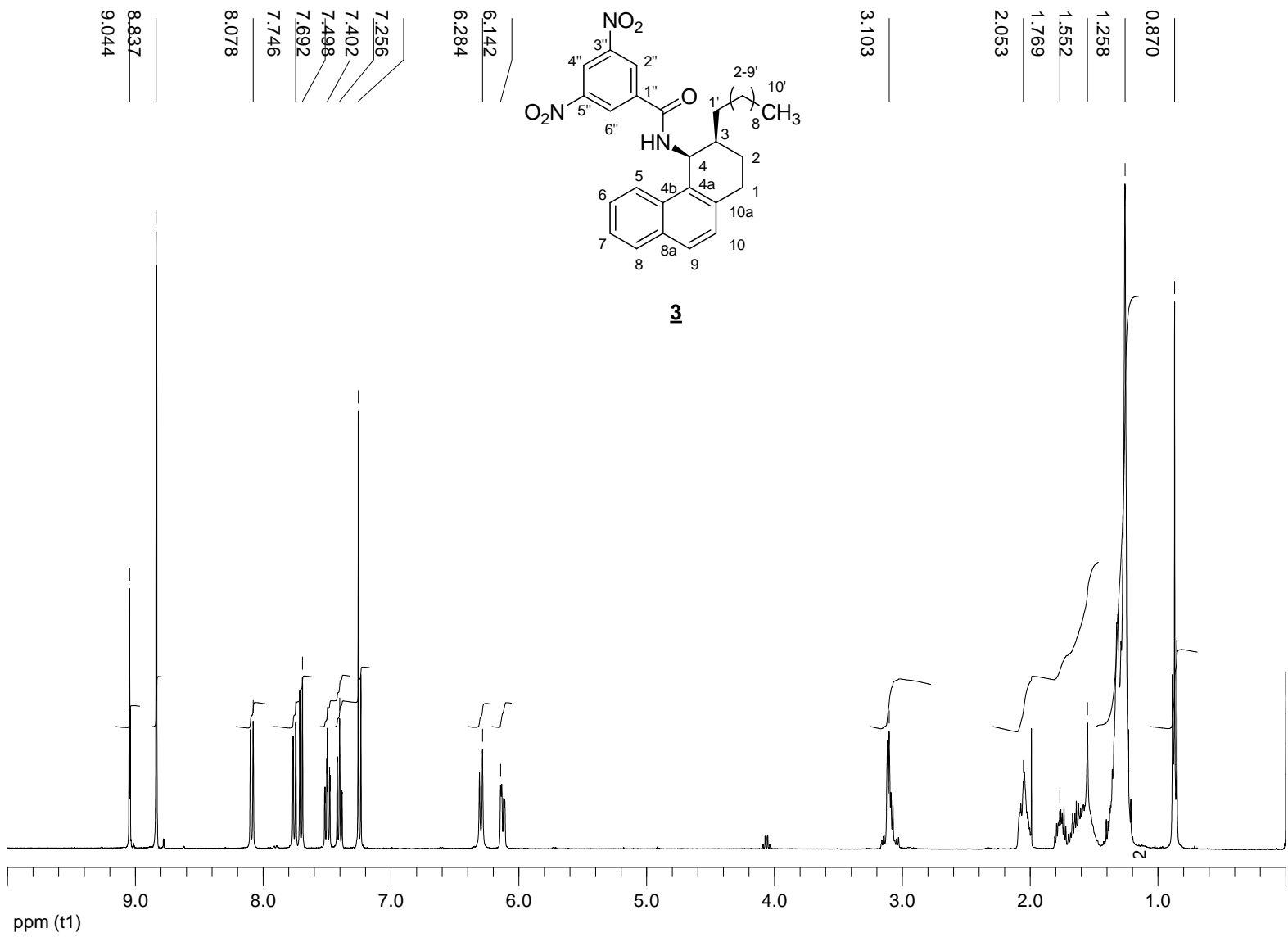
COSY RMN (CDCl₃)



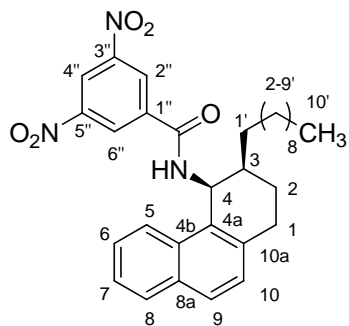
108



HSQC RMN (CDCl₃)

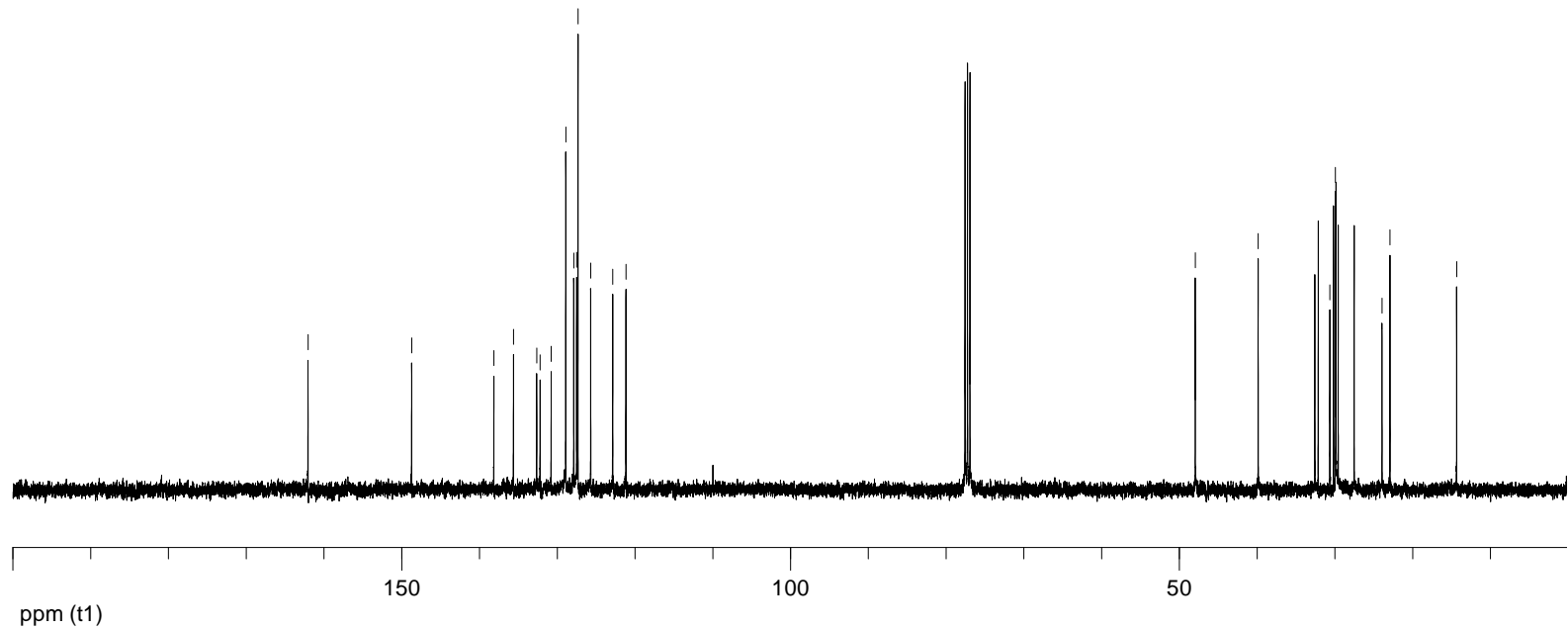


¹H RMN (400 MHz, CDCl₃)

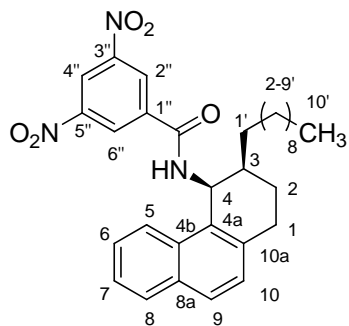


3

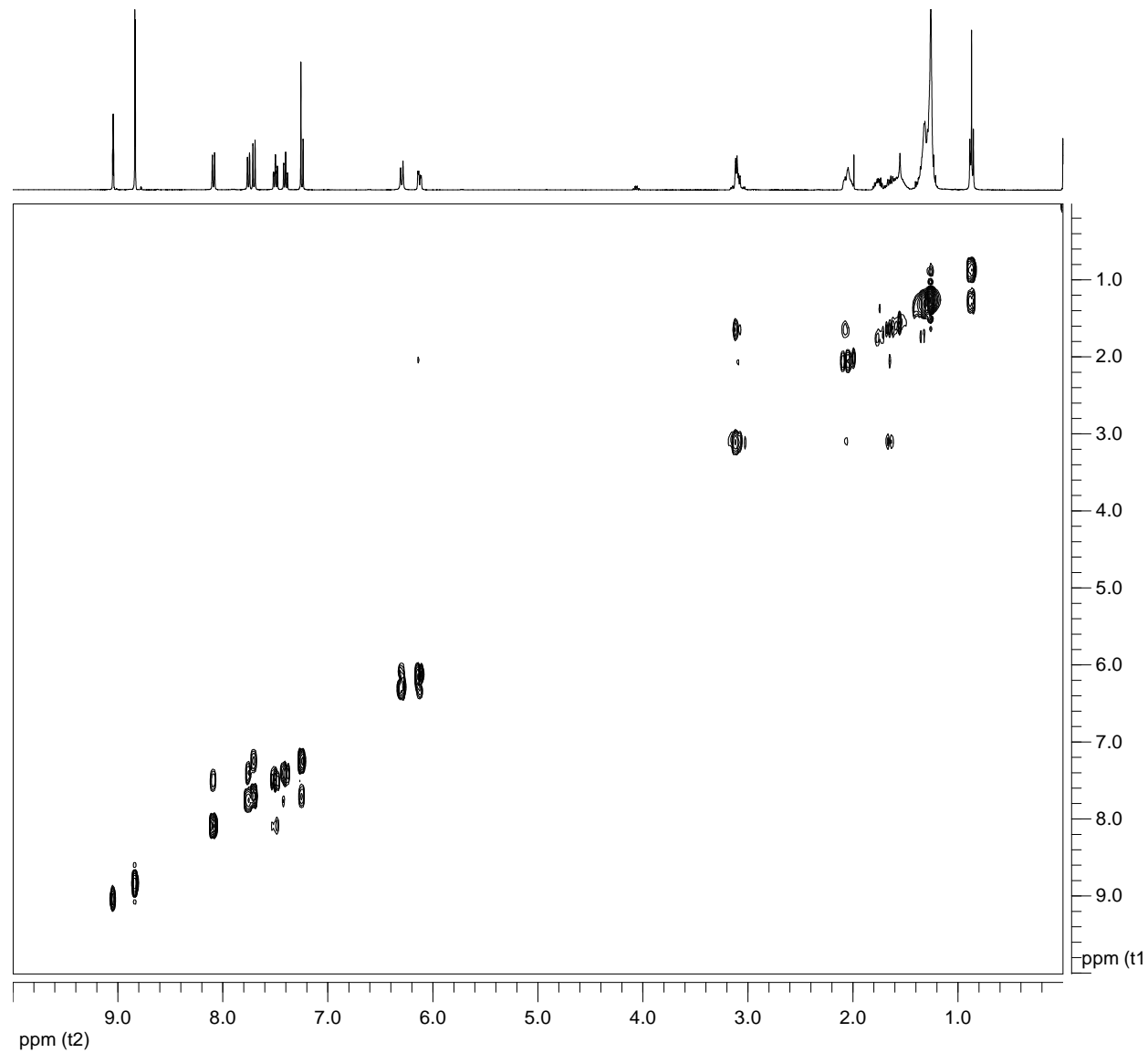
- 162.049
- 148.720
- 138.154
- 135.629
- 132.646
- 132.199
- 130.784
- 128.902
- 127.876
- 127.507
- 127.328
- 125.699
- 122.864
- 121.165
- 47.959
- 39.865
- 30.650
- 29.929
- 23.941
- 22.912
- 14.341



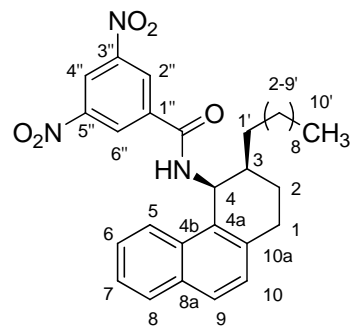
¹³C RMN (100.6 MHz, CDCl₃)



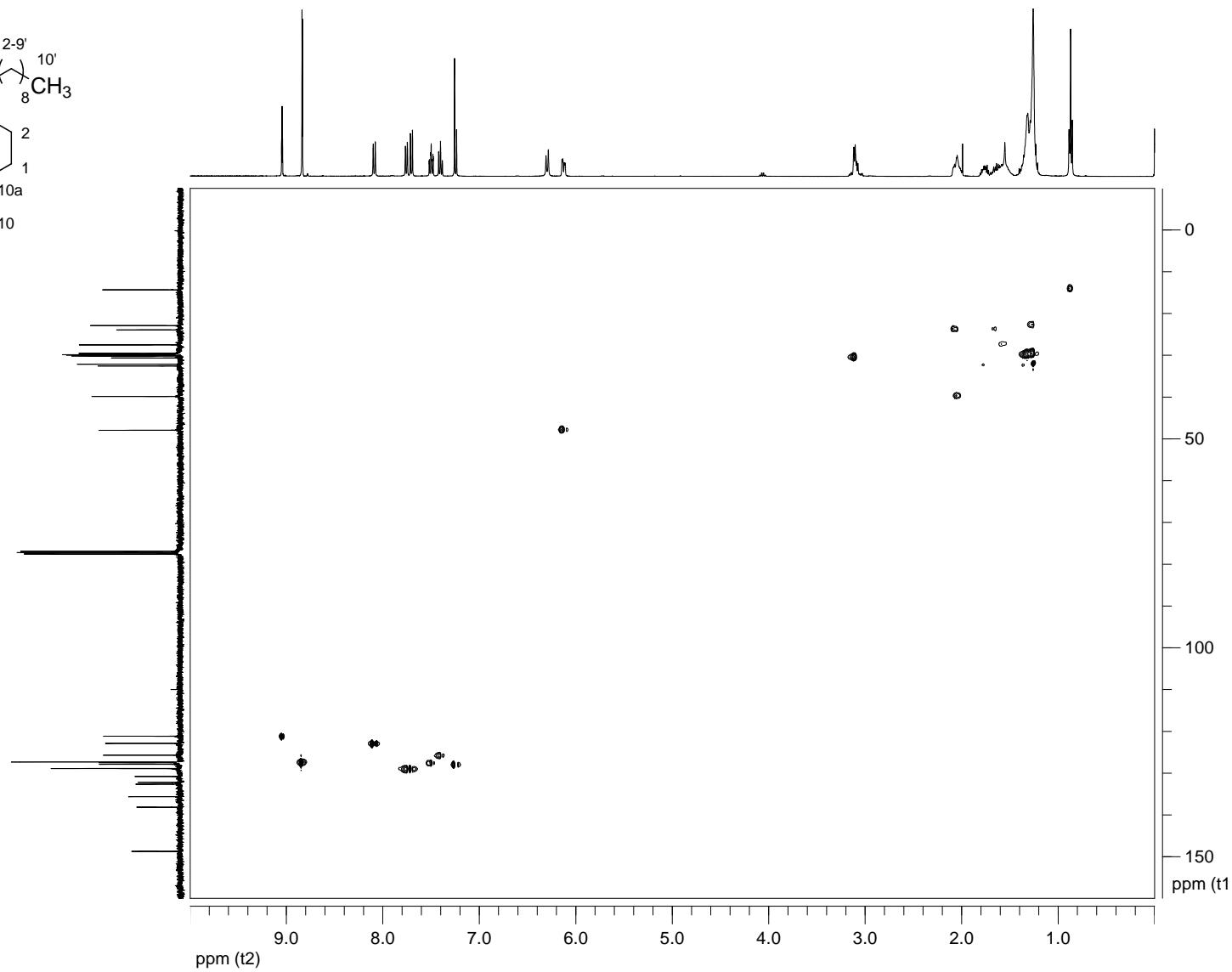
3



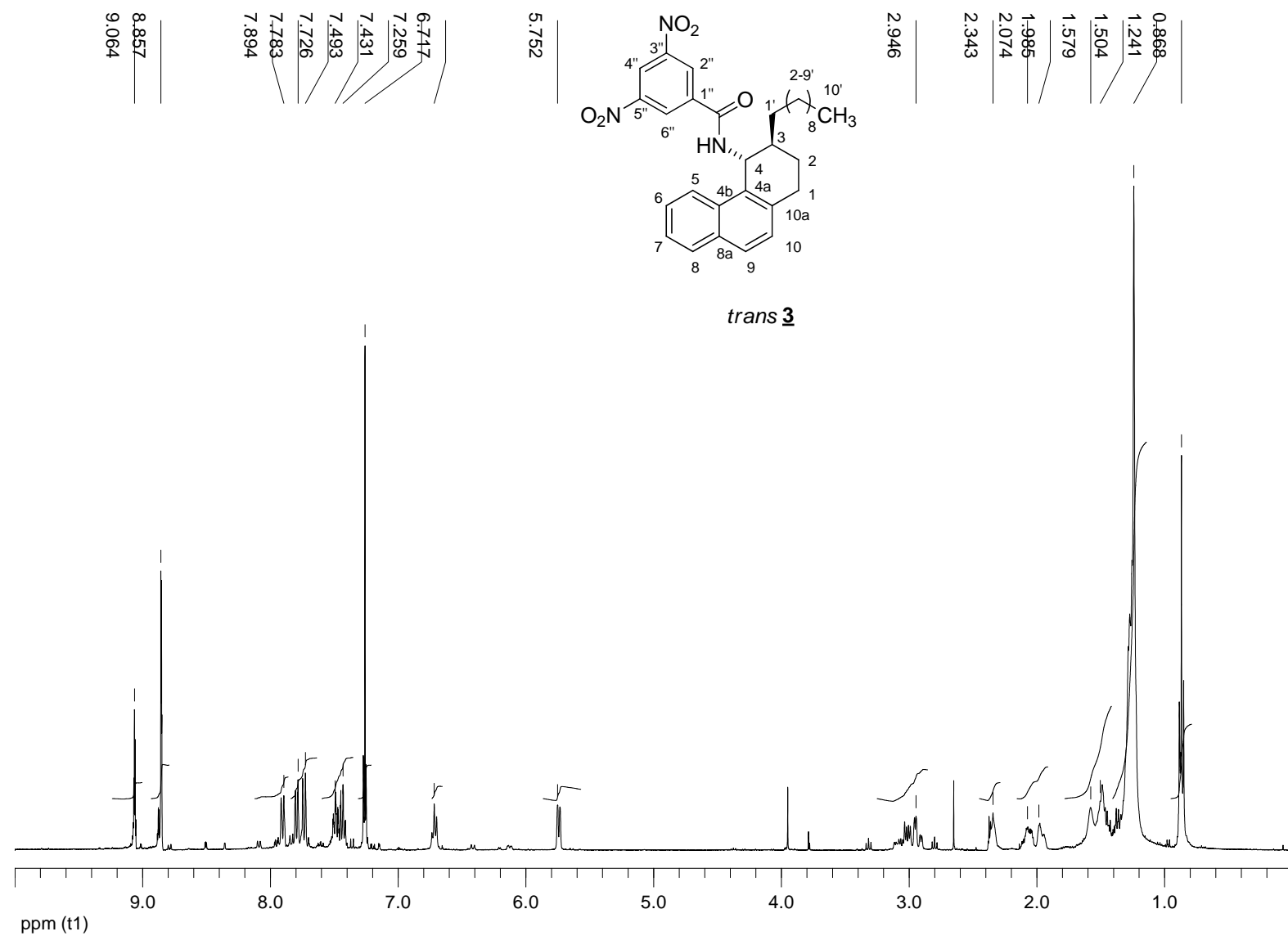
COSY RMN (CDCl₃)



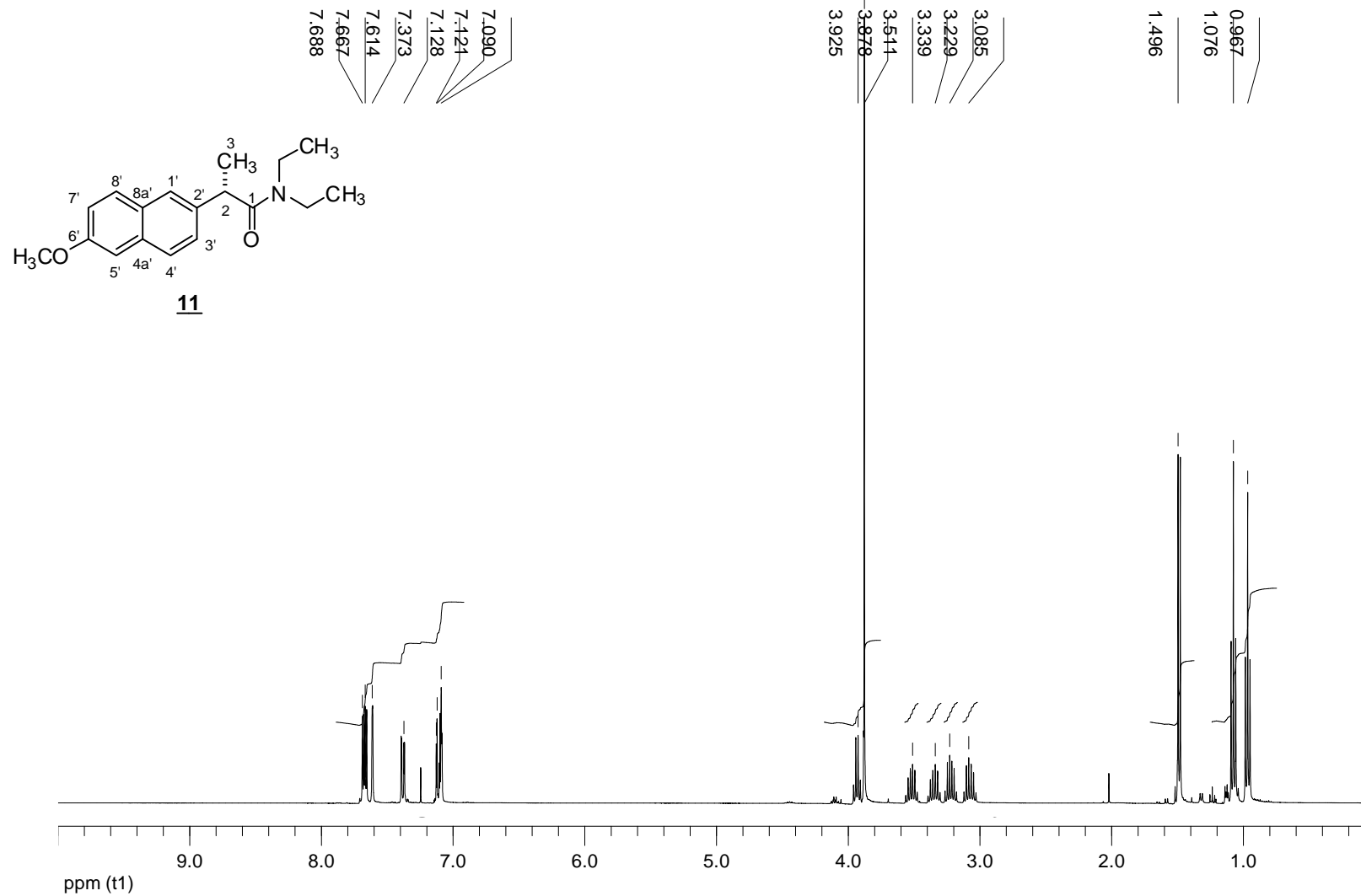
3



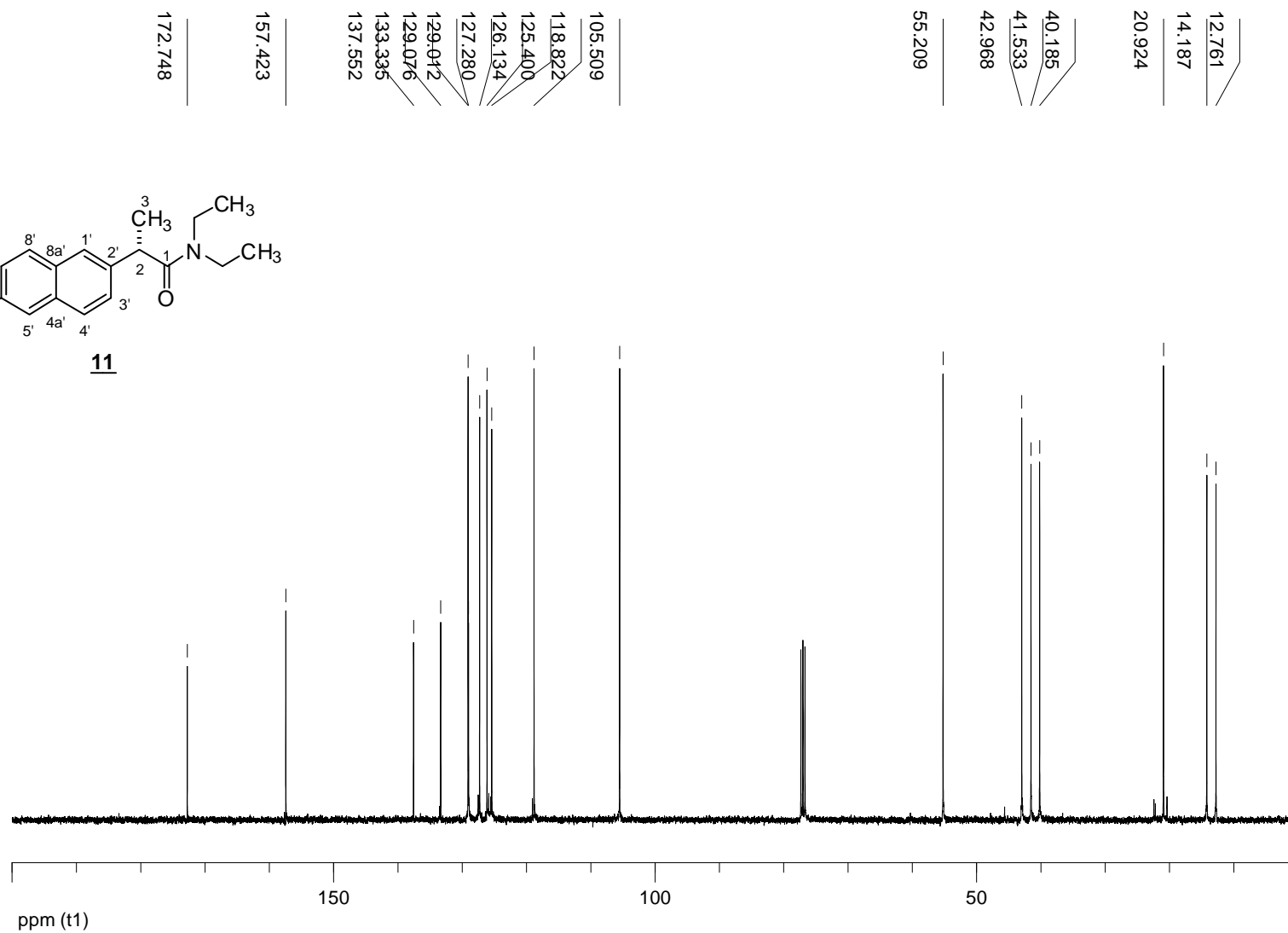
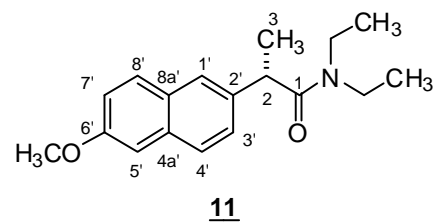
HSQC RMN (CDCl₃)



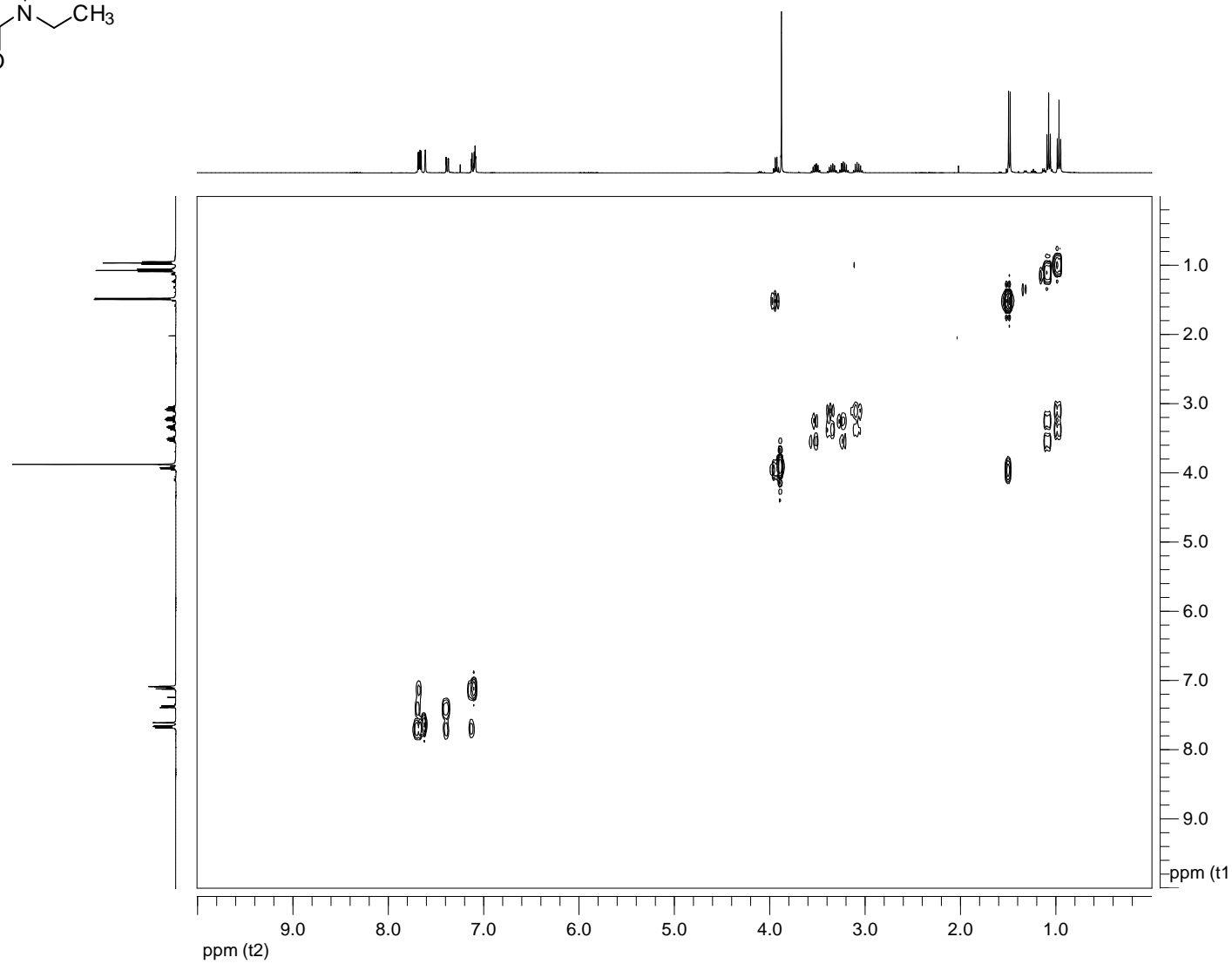
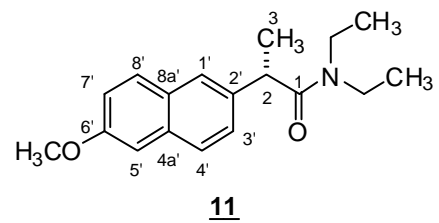
¹H RMN (400 MHz, CDCl₃)



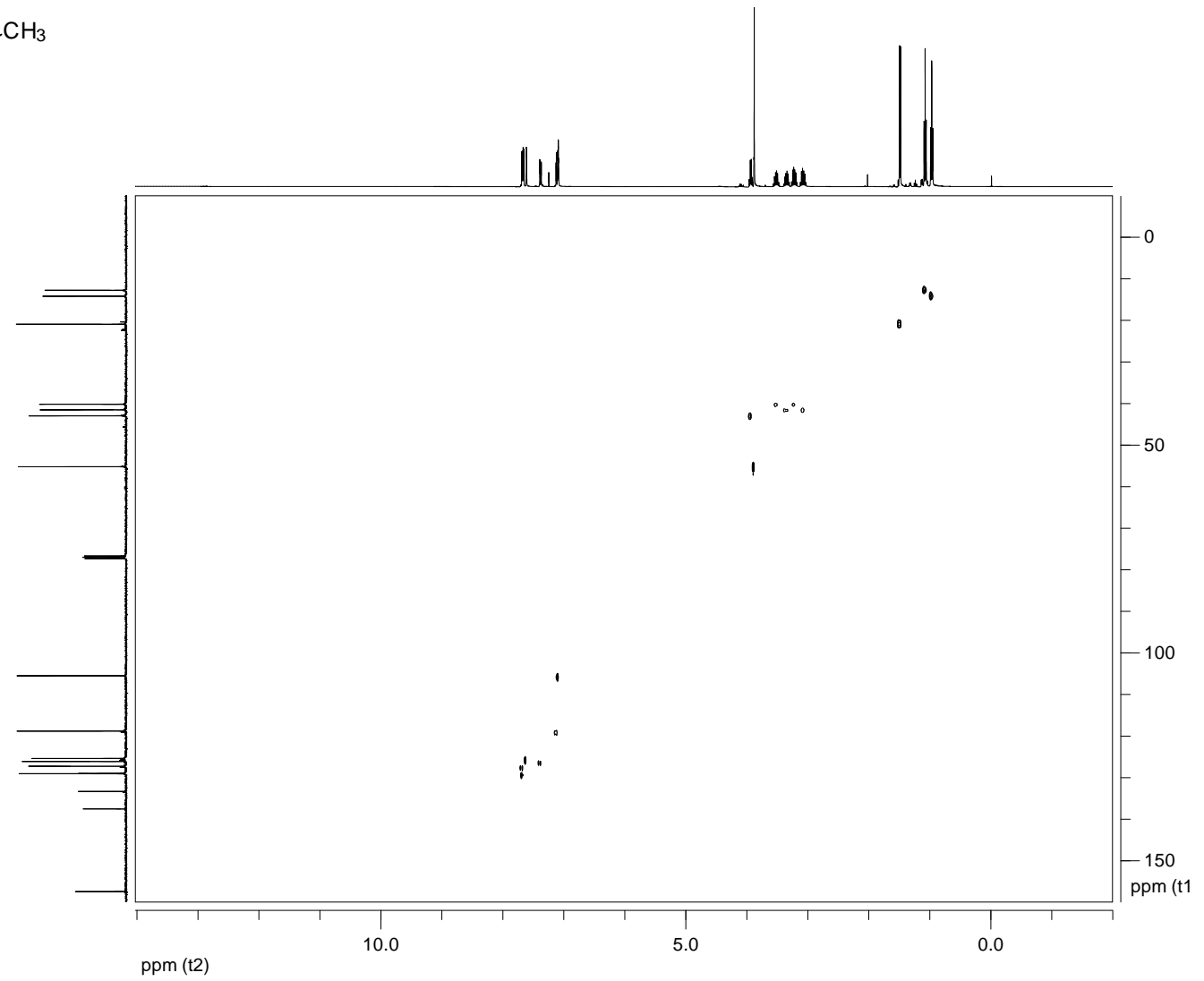
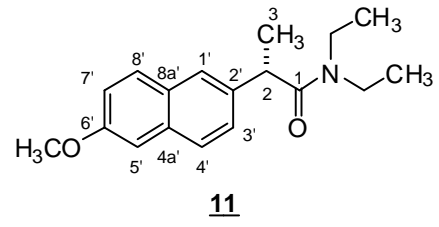
RMN ^1H (400 MHz, CDCl_3)



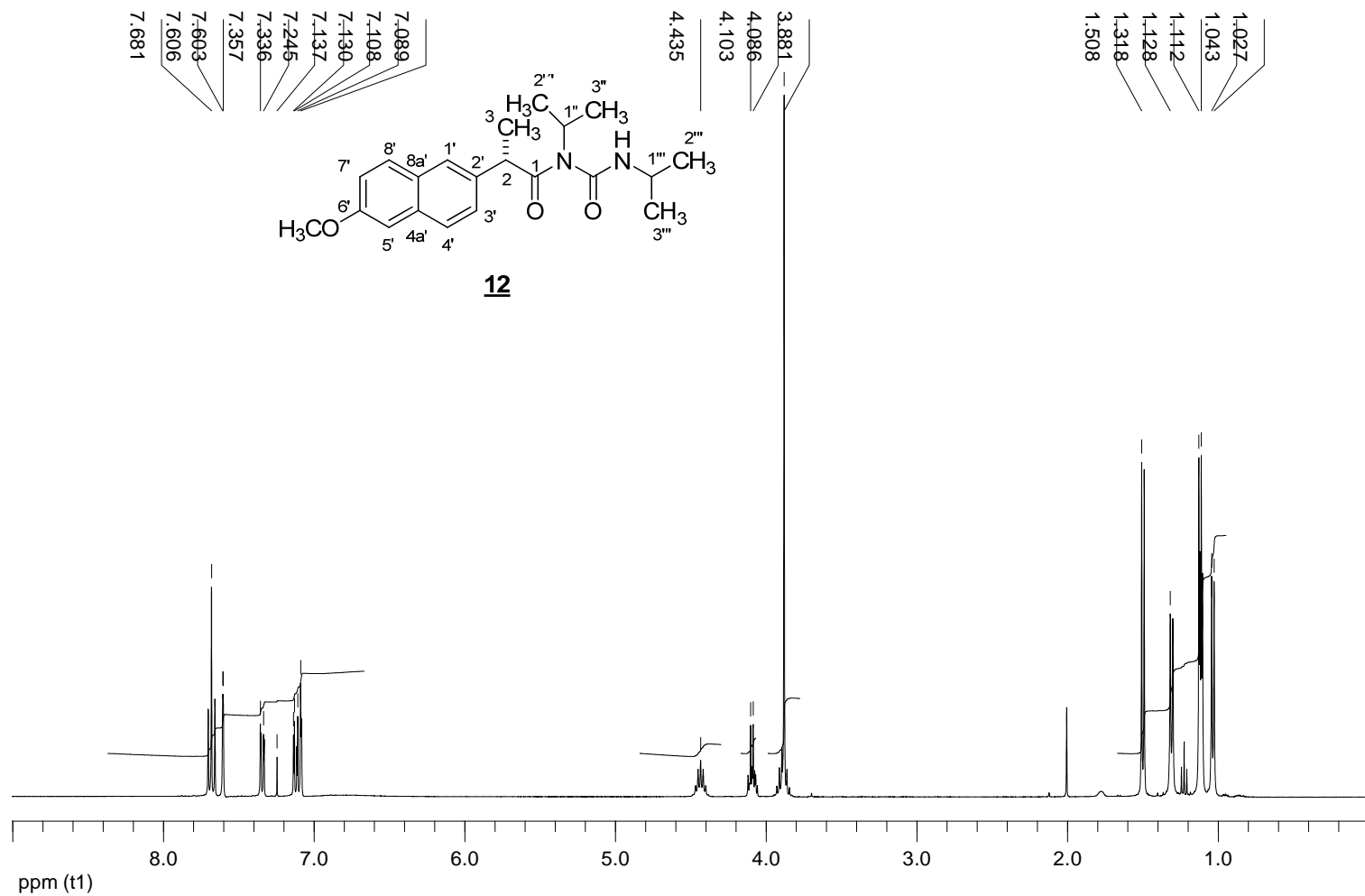
RMN ^{13}C (100,6 MHz, CDCl_3)



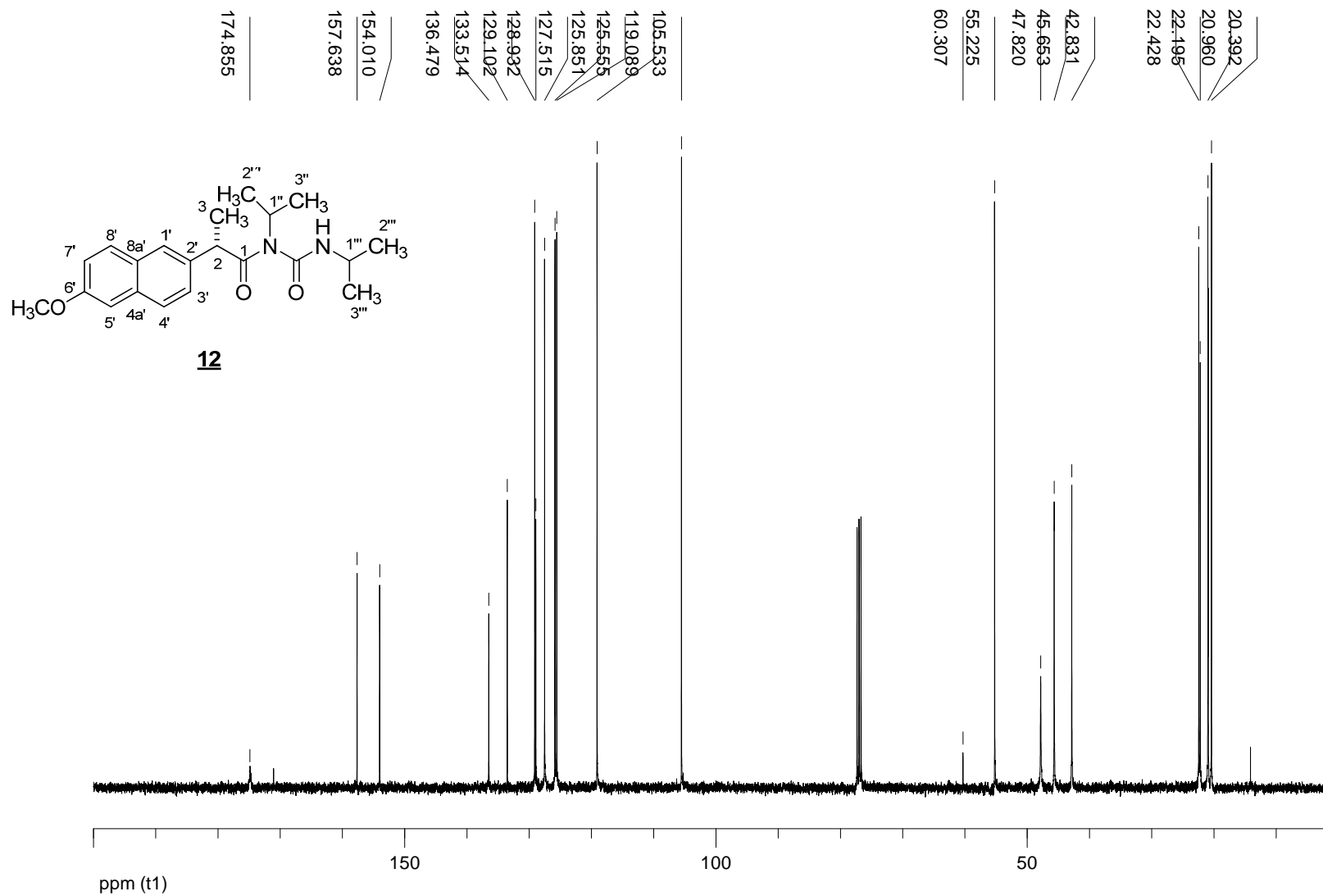
RMN COSY (CDCl₃)



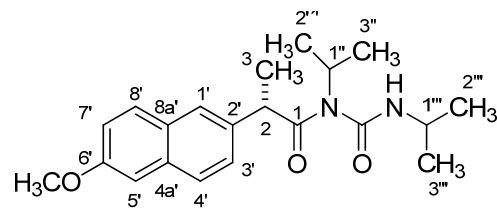
RMN HSQC (CDCl₃)



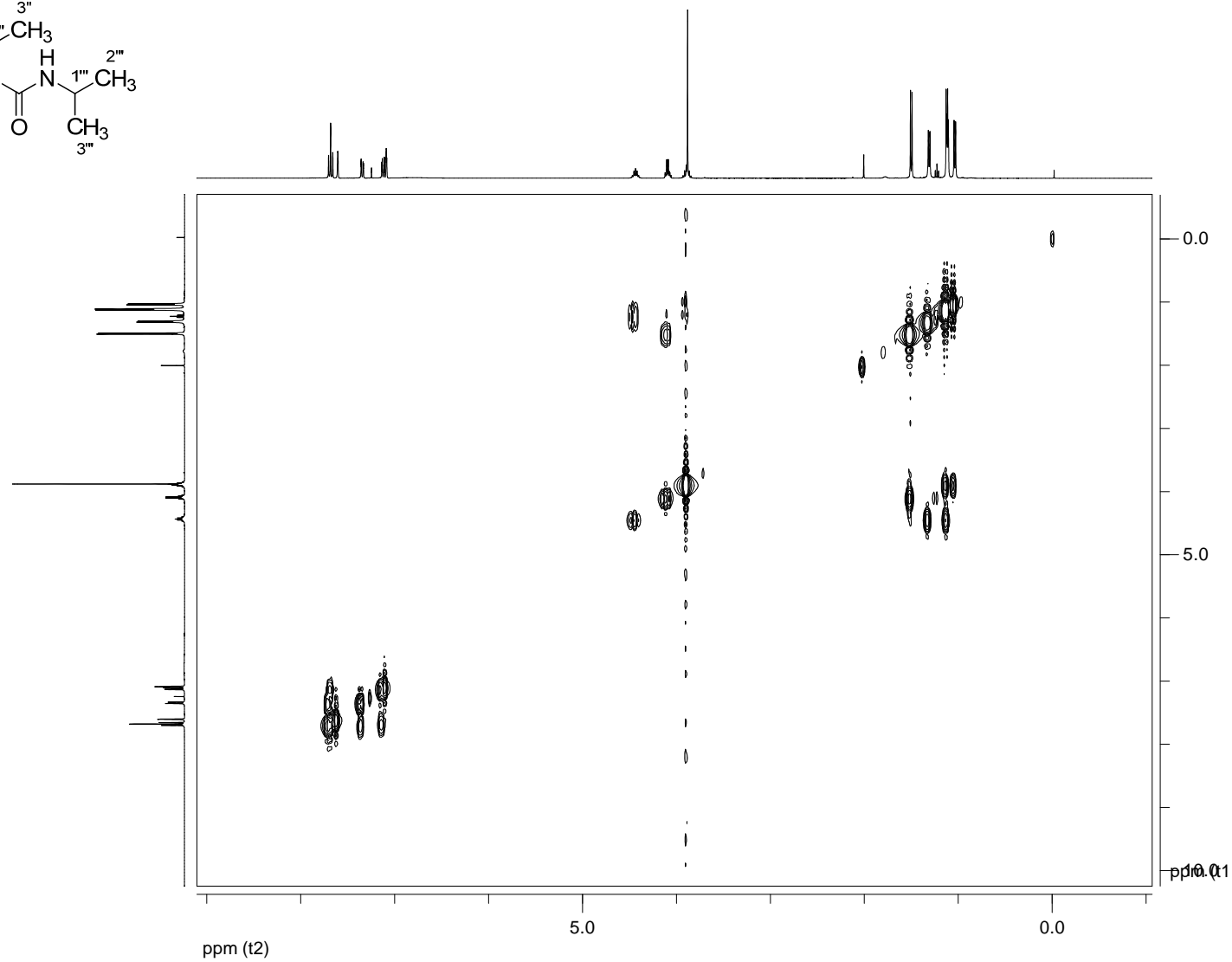
RMN ^1H (400 MHz, CDCl_3)



RMN ^{13}C (100,6 MHz, CDCl_3)



12



RMN COSY (CDCl₃)