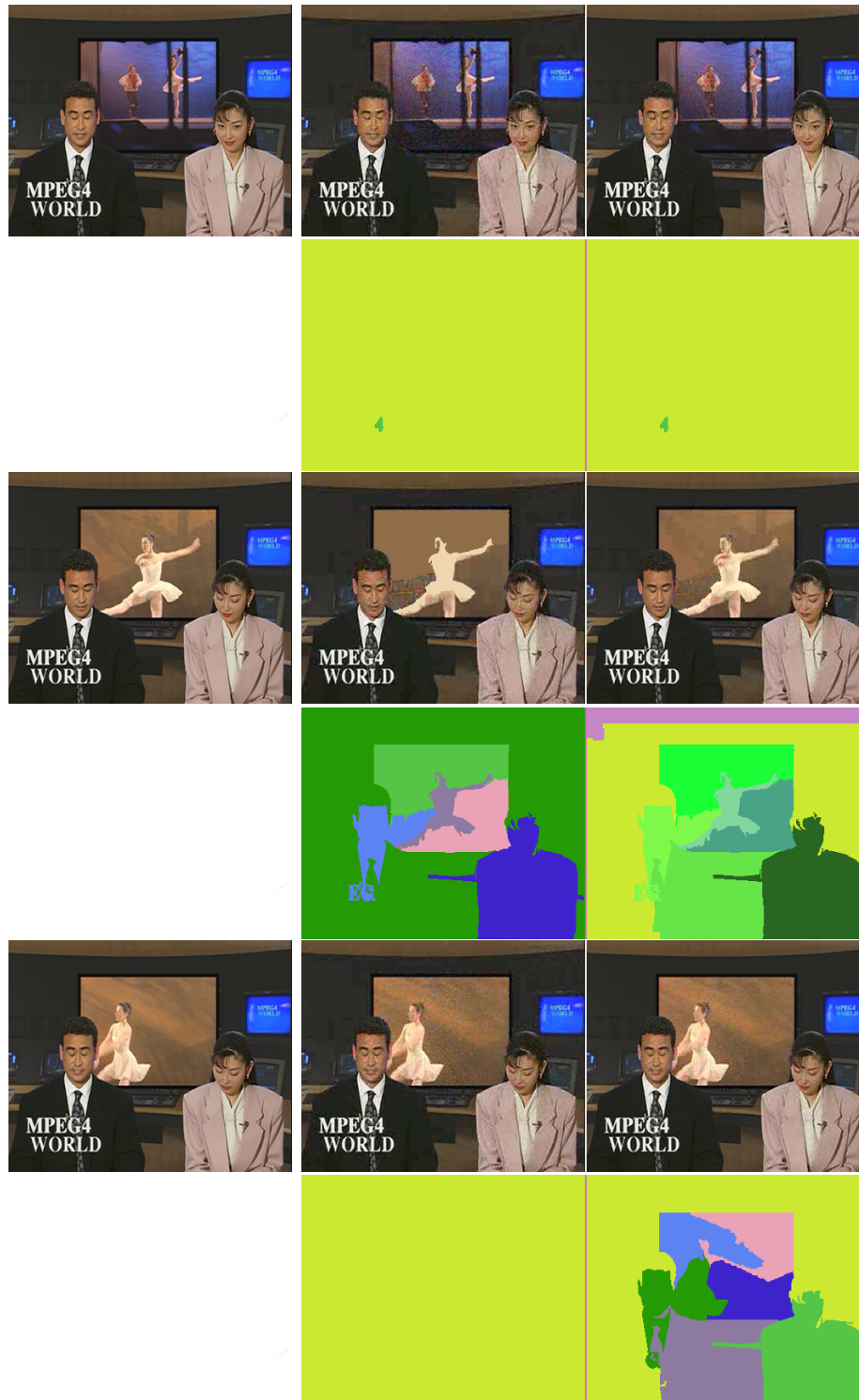


**Figure 9.9:** Example of PSNR full frame scalability: News sequence (CIF@30Hz), 256 kbps (base layer) + 256 kbps (enhancement layer). From left to right, the figure shows the original image, the base layer, the enhancement layer and the corresponding partitions (below the images) for frames #0 (intra), #60 and #120 (inter)



**Figure 9.10:** Example of PSNR full frame scalability: News sequence (CIF@30Hz), 256 kbps (base layer) + 256 kbps (enhancement layer). From left to right, the figure shows the original image, the base layer, the enhancement layer and the corresponding partitions (below the images) for frames #180, #240 and #299 (inter)